

# Texas Industry Profiles

by David Mass

The Texas industry profiles were recently redeveloped using the North American Industry Classification System (NAICS). This update was undertaken as a means to provide end-users of employment data with an overview of statewide industrial employment and wage statistics at the three- and four-digit industry levels.

Profiles have been developed for 61 industries. Each profile illustrates the total estimated employment level, growth rate, and percentage of total Texas employment. The profiles also contain a thorough industry description, the size class distribution for the industry, a component industry breakout of the industry, and historical employment information. Page 7 shows an example of the current profile for the *Heavy and Civil Engineering Construction* (NAICS 237) industry.

LMCI plans to expand the list of industries available to include the entire spectrum of NAICS industries in the future, adding 33 profiles for a total of 94 three-digit level industry profiles.

The following industry profiles will be available on June 1, 2004:

Oil and Gas Extraction	Gasoline Stations
Support Activities for Mining	Clothing and Clothing Accessories Stores
Construction of Buildings	Sporting Goods, Hobby, Book, and Music Stores
Heavy and Civil Engineering Construction	Miscellaneous Store Retailers
Wood Product Manufacturing	Nonstore Retailers
Nonmetallic Mineral Product Manufacturing	Air Transportation
Primary Metal Manufacturing	Rail Transportation
Fabricated Metal Product Manufacturing	Pipeline Transportation
Machinery Manufacturing	Support Activities for Transportation
Computer and Electronic Product Manufacturing	Couriers and Messengers
Electrical Equip., Appliance, and Component Manufacturing	Warehousing and Storage
Transportation Equipment Manufacturing	Publishing Industries (Except Internet)
Furniture and Related Product Manufacturing	Broadcasting (Except Internet)
Miscellaneous Manufacturing	Telecommunications
Food Manufacturing	Internet Service Providers, Web Search Portals
Beverage and Tobacco Product Manufacturing	Credit Intermediation and Related Activities
Religious, Civic, Professional Organizations	Securities, Commodities, Financial Investments
Paper Manufacturing	Funds, Trusts, and Other Financial Vehicles
Printing and Related Support Manufacturing	Real Estate
Petroleum and Coal Products Manufacturing	Rental and Leasing Services
Chemical Manufacturing	Administrative and Support Services
Plastics and Rubber Manufacturing	Waste Management and Remediation Services
Merchant Wholesalers, Durable Goods	Ambulatory Health Care Services
Merchant Wholesalers, Nondurable Goods	Hospitals
Motor Vehicle and Parts Dealers	Nursing and Residential Care Facilities
Furniture and Home Furnishings Stores	Social Assistance
Electronics and Appliance Stores	Amusement, Gambling, and Recreation
Building Material and Garden Equipment and Supplies Dealers	Accommodation
Food and Beverage Stores	Food Services and Drinking Places
Health and Personal Care Stores	Repair and Maintenance
	Personal and Laundry Services

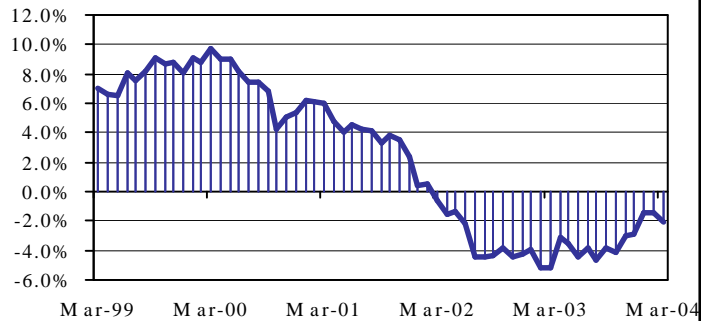
Industry profiles can be viewed or downloaded in pdf format on LMCI's website at: <http://www.tracer2.com>.

**TEXAS INDUSTRY PROFILE**  
**Heavy and Civil Engineering Construction**  
**NAICS 237**

**Industry Description**

The Heavy and Civil Engineering Construction subsector comprises establishments whose primary activity is the construction of entire engineering projects (e.g., highways and dams), and specialty trade contractors, whose primary activity is the production of a specific component for such projects. Specialty trade contractors in Heavy and Civil Engineering Construction generally are performing activities that are specific to heavy and civil engineering construction projects and are not normally performed on buildings. The work performed may include new work, additions, alterations, or maintenance and repairs. \*NAICS 2371 (Utility System Construction) 2372 (Land Subdivision) 2373 (Highway, Street, and Bridge Construction) 2379 (Other Heavy Civil Engineering Construction).

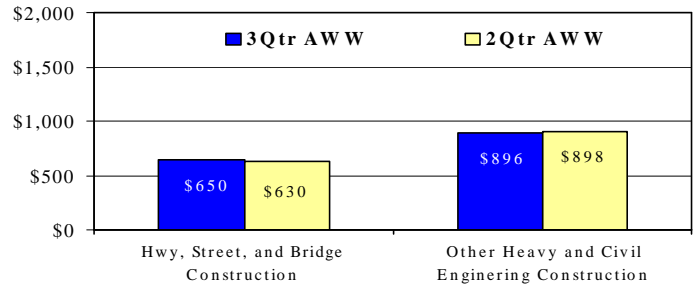
**Annual Employment Growth Rate**  
**1999-2004**



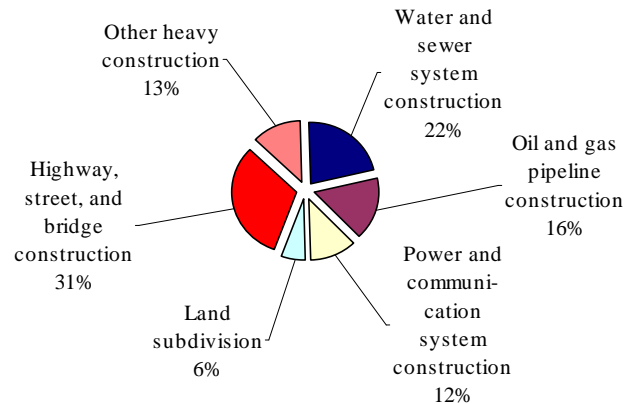
**Size Class Data for Heavy & Civil Engineering Construction**

# of Employees	# of Firms	Employment	% of NAICS 237
0	487	205	0.2%
1-4	1,510	3,343	3.5%
5-9	713	4,796	5.1%
10-19	552	7,725	8.2%
20-49	579	17,996	19.0%
50-99	243	16,756	17.7%
100-249	150	22,023	23.3%
250-499	31	9,251	9.8%
500-999	8	5,014	5.3%
1000+	5	7,592	8.0%
<b>Total</b>	<b>4,278</b>	<b>94,701</b>	<b>100.0%</b>

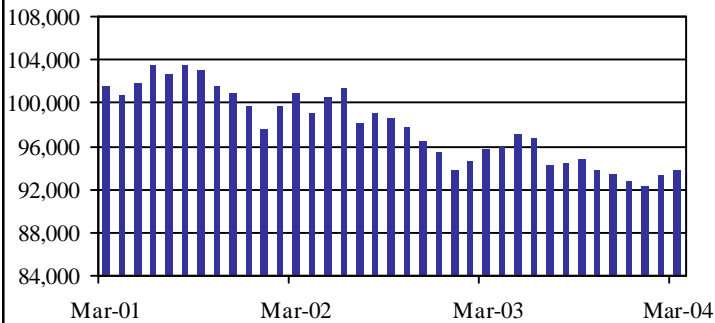
**Average Weekly Wage for 2003**



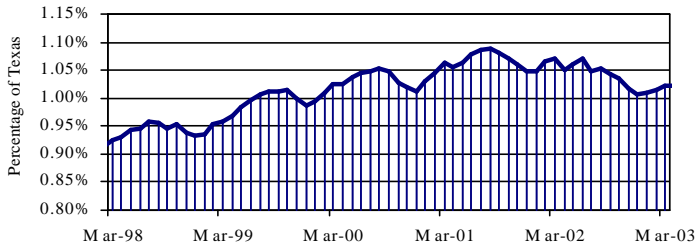
**Component Breakout**  
**3rd Quarter 2003**



**Employment Levels for Heavy Construction**  
**and Civil Engineering Construction**



**Heavy and Civil Engineering Construction as a Percentage**  
**of Texas Total Nonagricultural Employment**



**Historical Covered Employment**  
**for Heavy and Civil Engineering Construction**

NAICS*	3rd QTR 2002	3rd QTR 2003	Numerical	Percentage
2371	48,862	46,605	-2,257	-4.6%
2372	5,816	5,405	-411	-7.1%
2373	29,657	30,405	748	2.5%
2379	13,314	12,285	-1,029	-7.7%