

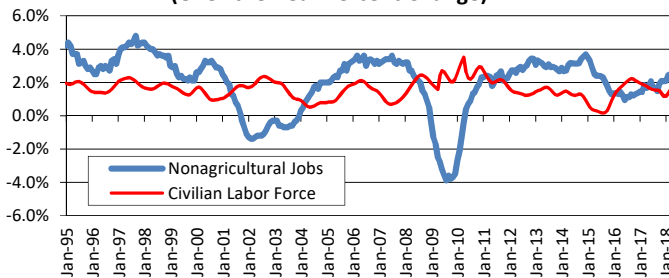
Texas Nonagricultural Employment Summary

Total Nonagricultural Wage and Salary employment increased by 39,600 jobs over-the-month in April following a revised increase of 36,200 jobs for March. Both the Goods Producing and Service-Providing sectors gained employment with the Goods Producing sector posting the largest monthly increase in over four years. Since April 2017, Total Nonfarm employment increased by 332,300 jobs as the annual growth rate accelerated to its highest peak in over three years at 2.7 percent.

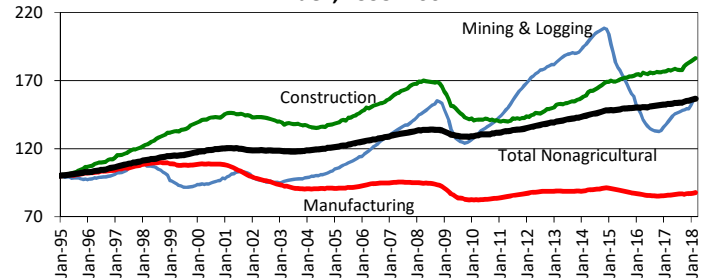
Texas Labor Force Summary

The Texas seasonally adjusted unemployment rate rose to 4.1 percent in April, and the rate has fallen 0.4 percentage points over the year. The U.S. rate fell 0.2 percentage points to 3.9 percent in April and has fallen 0.5 percentage points over the year. The Texas Civilian Labor Force grew by 47,400 persons in April for a fourth consecutive month of expansion. The number of employed increased by 41,200 workers, while the number of unemployed rose by 6,200 persons. The Texas CLF grew by 248,600 persons over the year.

Total Nonagricultural Jobs vs. Civilian Labor Force (Over-the-Year Percent Change)



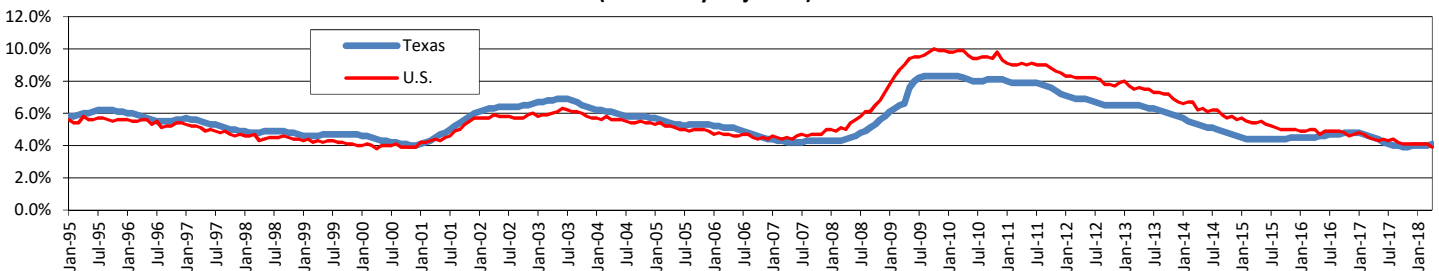
Goods Producing Sector Index, 1995=100



TEXAS NONAGRICULTURAL WAGE AND SALARY EMPLOYMENT SEASONALLY ADJUSTED

INDUSTRY TITLE	Apr 2018	Mar 2018	Apr 2017	Mar '18 to Apr '18		Apr '17 to Apr '18	
				Absolute Change	Percent Change	Absolute Change	Percent Change
Total Nonagricultural	12,507,500	12,467,900	12,175,200	39,600	0.3	332,300	2.7
Total Private	10,560,100	10,522,200	10,232,600	37,900	0.4	327,500	3.2
Goods-Producing	1,869,600	1,852,000	1,773,800	17,600	1.0	95,800	5.4
Mining and Logging	245,800	240,900	218,600	4,900	2.0	27,200	12.4
Construction	748,900	744,800	708,300	4,100	0.6	40,600	5.7
Manufacturing	874,900	866,300	846,900	8,600	1.0	28,000	3.3
Service-Providing	10,637,900	10,615,900	10,401,400	22,000	0.2	236,500	2.3
Trade, Transportation, and Utilities	2,502,300	2,499,400	2,446,900	2,900	0.1	55,400	2.3
Information	198,800	199,000	202,600	-200	-0.1	-3,800	-1.9
Financial Activities	768,400	770,900	751,000	-2,500	-0.3	17,400	2.3
Professional and Business Services	1,735,600	1,728,100	1,657,400	7,500	0.4	78,200	4.7
Education and Health Services	1,692,900	1,686,700	1,664,000	6,200	0.4	28,900	1.7
Leisure and Hospitality	1,356,200	1,352,500	1,309,400	3,700	0.3	46,800	3.6
Other Services	436,300	433,600	427,500	2,700	0.6	8,800	2.1
Government	1,947,400	1,945,700	1,942,600	1,700	0.1	4,800	0.2

Texas and U.S. Unemployment Rates (Seasonally Adjusted)



TEXAS AND U.S. CIVILIAN LABOR FORCE ESTIMATES (Seasonally Adjusted)

	TEXAS				UNITED STATES				
	CLF	EMP	UNEMP	RATE	CLF	EMP	UNEMP	RATE	
Apr '18	13,750,300	13,191,800	558,500	4.1	Apr '18	161,527,000	155,181,000	6,346,000	3.9
Mar '18	13,702,900	13,150,600	552,300	4.0	Mar '18	161,763,000	155,178,000	6,585,000	4.1
Apr '17	13,501,700	12,892,600	609,100	4.5	Apr '17	160,213,000	153,156,000	7,056,000	4.4