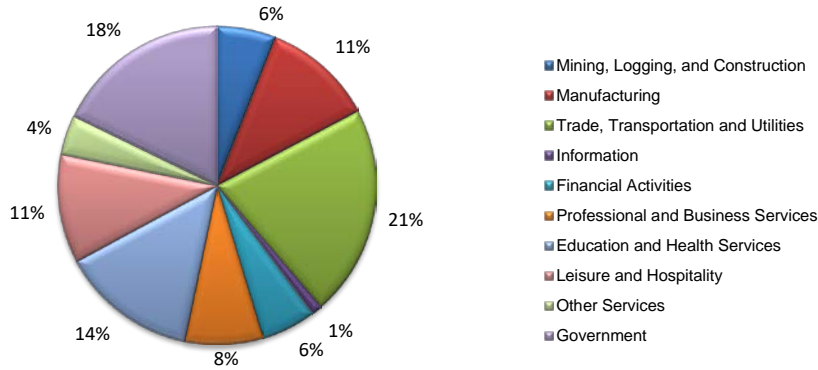
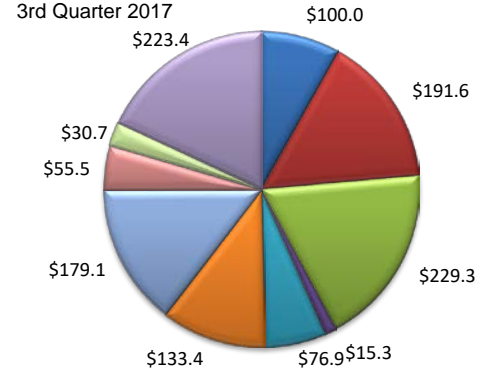


(Armstrong, Carson, Oldham, Potter, Randall)

Industry Composition



Wages by Industry (in millions)



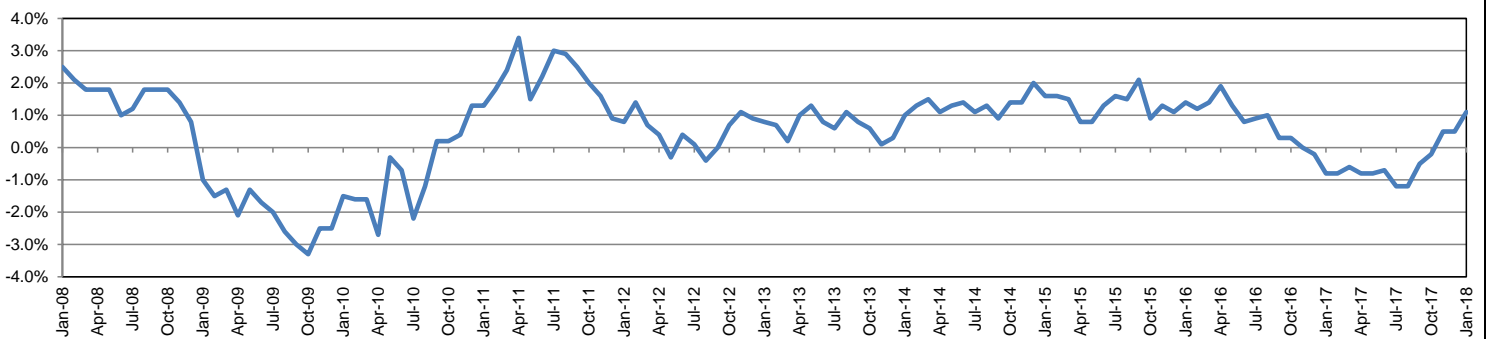
Employment by Industry

				Monthly Change		Annual Change	
	Jan-18	Dec-17	Jan-17	Actual	%	Actual	%
<b>Total Nonfarm</b>	119,400	121,300	118,100	-1,900	-1.6%	1,300	1.1%
Mining, Logging and Construction	7,100	7,200	6,900	-100	-1.4%	200	2.9%
Manufacturing	13,500	13,700	13,000	-200	-1.5%	500	3.8%
Trade, Transportation, and Utilities	25,600	26,200	25,400	-600	-2.3%	200	0.8%
Information	1,300	1,300	1,300	0	0.0%	0	0.0%
Financial Activities	6,700	6,700	6,600	0	0.0%	100	1.5%
Professional and Business Services	9,400	9,400	9,600	0	0.0%	-200	-2.1%
Education and Health Services	16,600	16,700	16,700	-100	-0.6%	-100	-0.6%
Leisure and Hospitality	13,100	13,200	12,700	-100	-0.8%	400	3.1%
Other Services	4,800	4,900	4,800	-100	-2.0%	0	0.0%
Government	21,300	22,000	21,100	-700	-3.2%	200	0.9%

Industry Size Class

Size Class	Employees per firm	Number of Firms	September 2017		
			Employment in Size Class	% Total Employment	
9	1000+	14	31,473	27.5%	
8	500-999	12	8,121	7.1%	
7	250-499	19	5,948	5.2%	
6	100-249	109	15,855	13.9%	
5	50-99	203	13,848	12.1%	
4	20-49	550	16,808	14.7%	
3	10-19	746	10,060	8.8%	
2	5-9	1,039	6,962	6.1%	
1	1-4	2,619	5,255	4.6%	
0	0	551	0	0.0%	
<b>Total</b>			5,862	114,330	100.0%

Annual Growth Rate for Total Nonagricultural Employment



Unemployment Information (all estimates in thousands)

	Amarillo MSA				Texas (Actual)				United States (Actual)			
	C.L.F.	Emp.	Unemp.	Rate	C.L.F.	Emp.	Unemp.	Rate	C.L.F.	Emp.	Unemp.	Rate
Jan-18	131.3	127.6	3.7	2.8	13,622.1	13,054.1	568.0	4.2	160,037.0	152,848.0	7,189.0	4.5
Dec-17	131.5	128.2	3.3	2.5	13,598.1	13,096.2	501.8	3.7	159,880.0	153,602.0	6,278.0	3.9
Jan-17	130.3	125.9	4.4	3.4	13,417.3	12,749.0	668.4	5.0	158,676.0	150,527.0	8,149.0	5.1

Historical Unemployment Rates

