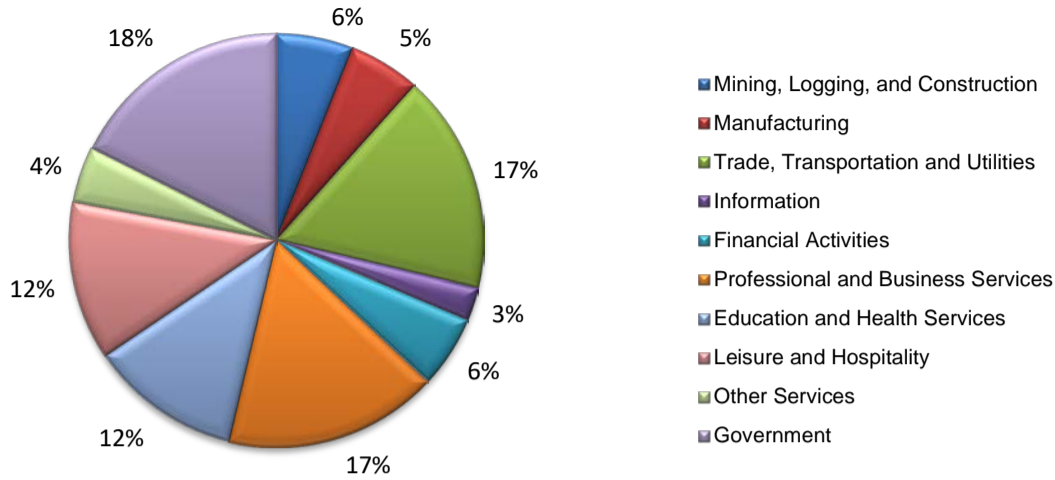
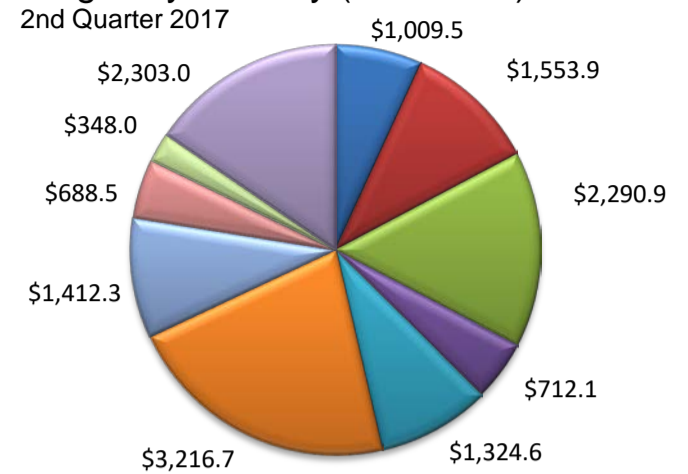


(Bastrop, Caldwell, Hays, Travis, Williamson)

Industry Composition



Wages by Industry (in millions)



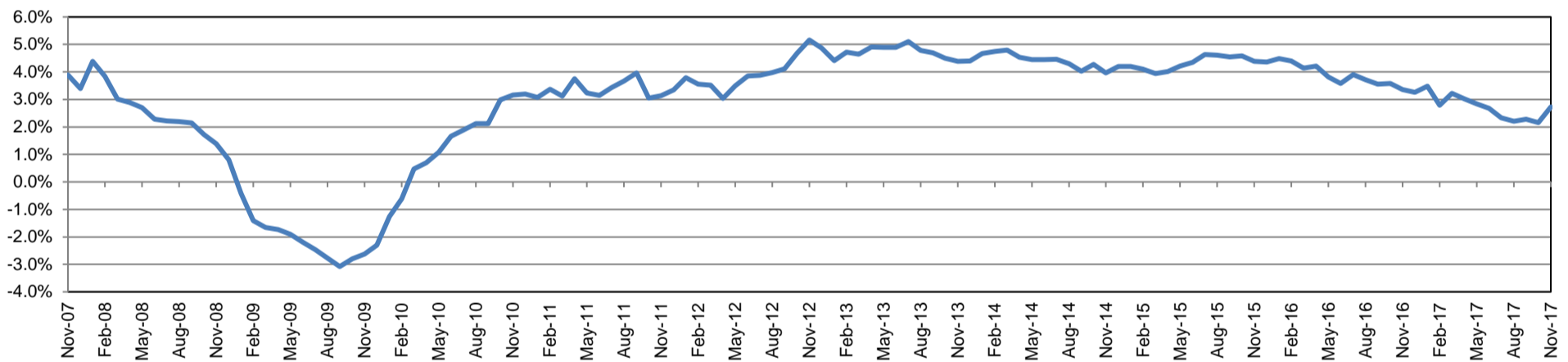
Employment by Industry

	Nov-17	Oct-17	Nov-16	Monthly Change		Annual Change	
				Actual	%	Actual	%
Total Nonfarm	1,046,400	1,036,300	1,018,600	10,100	1.0%	27,800	2.7%
Mining, Logging, and Construction	62,700	63,800	60,800	-1,100	-1.7%	1,900	3.1%
Manufacturing	58,700	57,800	55,600	900	1.6%	3,100	5.6%
Trade, Transportation, and Utilities	179,000	176,000	175,200	3,000	1.7%	3,800	2.2%
Information	27,500	27,500	28,900	0	0.0%	-1,400	-4.8%
Financial Activities	58,700	58,400	57,700	300	0.5%	1,000	1.7%
Professional and Business Services	175,500	171,900	172,600	3,600	2.1%	2,900	1.7%
Education and Health Services	123,700	124,100	119,500	-400	-0.3%	4,200	3.5%
Leisure and Hospitality	129,800	127,400	122,300	2,400	1.9%	7,500	6.1%
Other Services	46,300	45,600	44,200	700	1.5%	2,100	4.8%
Government	184,500	183,800	181,800	700	0.4%	2,700	1.5%

Industry Size Class

Size Class	Employees per firm	Number of Firms	June 2017		
			Employment in Size Class	% Total Employment	
9	1000+	96	285,521	28.8%	
8	500-999	136	94,211	9.5%	
7	250-499	281	97,007	9.8%	
6	100-249	978	148,461	15.0%	
5	50-99	1,422	97,508	9.8%	
4	20-49	3,718	113,027	11.4%	
3	10-19	4,959	67,268	6.8%	
2	5-9	6,868	45,132	4.6%	
1	1-4	22,788	42,572	4.3%	
0	0	6,652	0	0.0%	
Total			47,898	990,707	100.0%

Annual Growth Rate for Total Nonagricultural Employment



Unemployment Information (all estimates in thousands)

	Austin-Round Rock MSA				Texas (Actual)				United States (Actual)			
	C.L.F.	Emp.	Unemp.	Rate	C.L.F.	Emp.	Unemp.	Rate	C.L.F.	Emp.	Unemp.	Rate
Nov-17	1,146.7	1,115.4	31.3	2.7	13,501.8	13,002.6	499.3	3.7	160,466.0	154,180.0	6,286.0	3.9
Oct-17	1,133.6	1,104.4	29.3	2.6	13,392.5	12,922.8	469.7	3.5	160,465.0	154,223.0	6,242.0	3.9
Nov-16	1,124.6	1,088.7	35.9	3.2	13,371.1	12,771.2	599.9	4.5	159,451.0	152,385.0	7,066.0	4.4

Historical Unemployment Rates

