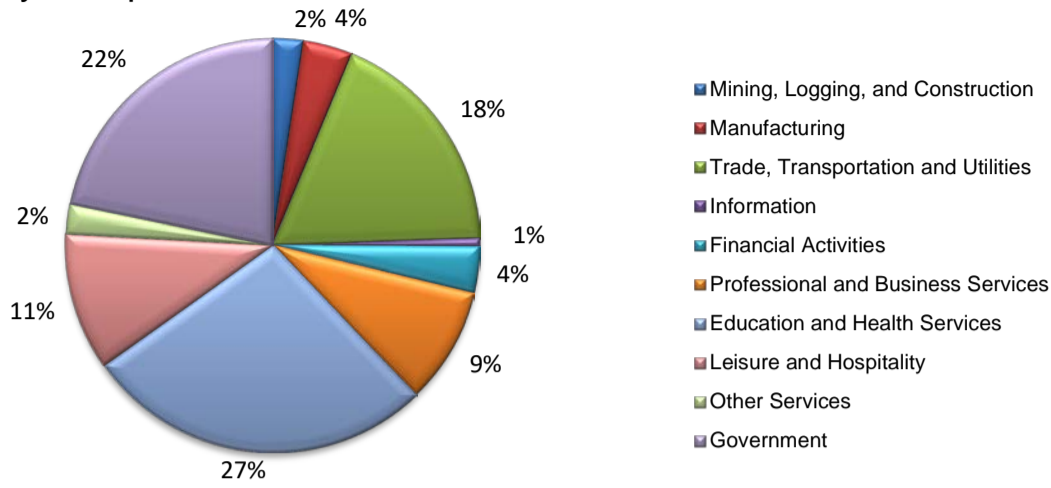
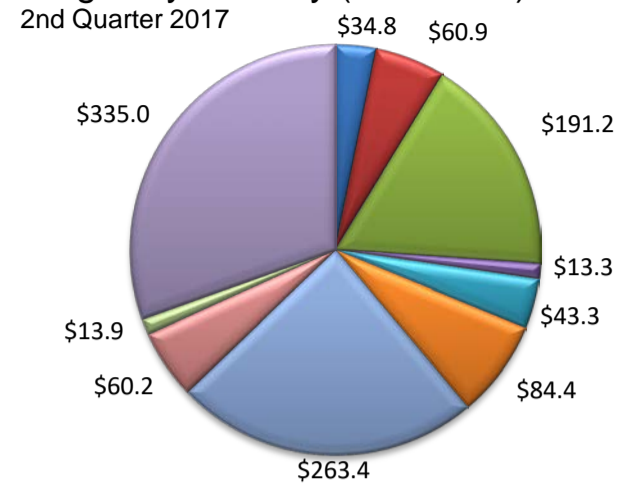


(Cameron)

Industry Composition



Wages by Industry (in millions)



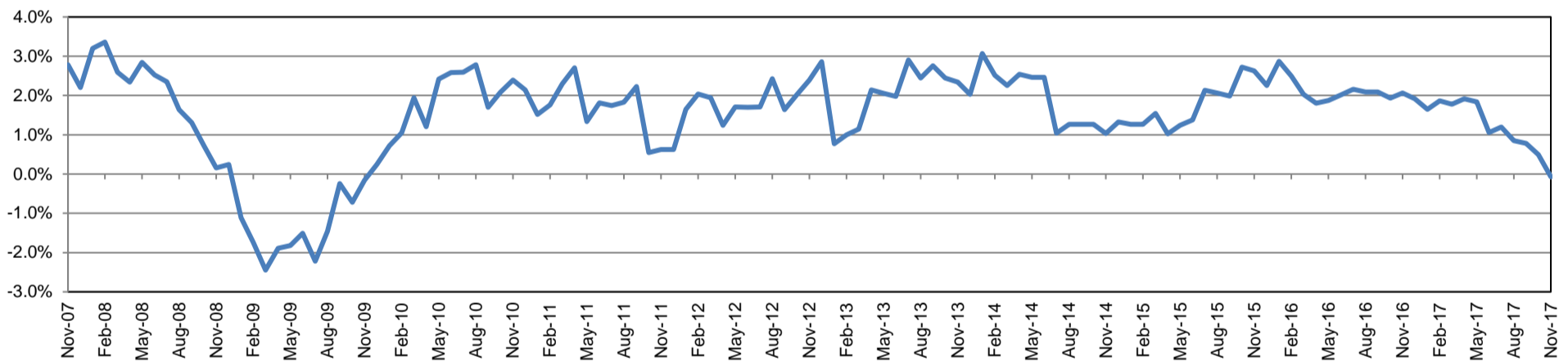
Employment by Industry

	Nov-17	Oct-17	Nov-16	Monthly Change		Annual Change	
				Actual	%	Actual	%
Total Nonfarm	143,300	142,800	143,400	500	0.4%	-100	-0.1%
Mining, Logging, and Construction	3,400	3,400	3,200	0	0.0%	200	6.3%
Manufacturing	5,500	5,500	5,500	0	0.0%	0	0.0%
Trade, Transportation, and Utilities	26,200	26,000	26,700	200	0.8%	-500	-1.9%
Information	900	900	1,000	0	0.0%	-100	-10.0%
Financial Activities	5,200	5,200	5,200	0	0.0%	0	0.0%
Professional and Business Services	13,000	12,700	12,300	300	2.4%	700	5.7%
Education and Health Services	39,200	39,200	40,400	0	0.0%	-1,200	-3.0%
Leisure and Hospitality	15,300	15,400	14,700	-100	-0.7%	600	4.1%
Other Services	3,400	3,400	3,300	0	0.0%	100	3.0%
Government	31,200	31,100	31,100	100	0.3%	100	0.3%

Industry Size Class

Size Class	Employees per firm	Number of Firms	June 2017		
			Employment in Size Class	% Total Employment	
9	1000+	17	36,358	25.9%	
8	500-999	28	18,129	12.9%	
7	250-499	34	12,479	8.9%	
6	100-249	153	23,387	16.7%	
5	50-99	199	13,716	9.8%	
4	20-49	471	14,157	10.1%	
3	10-19	742	10,271	7.3%	
2	5-9	989	6,633	4.7%	
1	1-4	2,409	5,050	3.6%	
0	0	407	0	0.0%	
Total			5,449	140,180	100.0%

Annual Growth Rate for Total Nonagricultural Employment



Unemployment Information (all estimates in thousands)

	Brownsville-Harlingen MSA				Texas (Actual)				United States (Actual)			
	C.L.F.	Emp.	Unemp.	Rate	C.L.F.	Emp.	Unemp.	Rate	C.L.F.	Emp.	Unemp.	Rate
Nov-17	164.1	154.6	9.5	5.8	13,501.8	13,002.6	499.3	3.7	160,466.0	154,180.0	6,286.0	3.9
Oct-17	163.1	154.2	8.9	5.5	13,392.5	12,922.8	469.7	3.5	160,465.0	154,223.0	6,242.0	3.9
Nov-16	166.6	154.9	11.7	7.0	13,371.1	12,771.2	599.9	4.5	159,451.0	152,385.0	7,066.0	4.4

Historical Unemployment Rates

