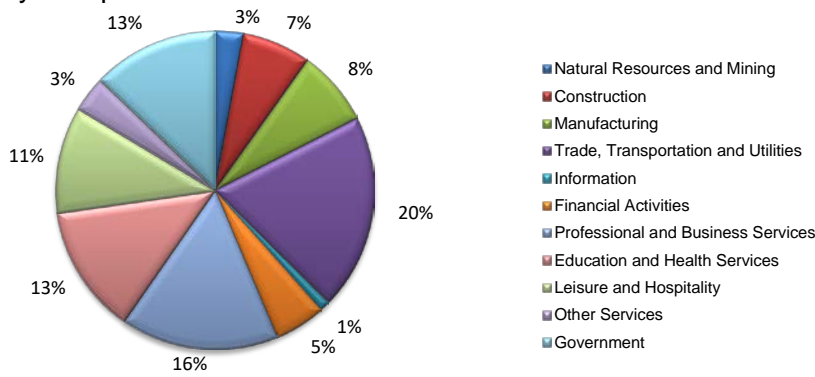
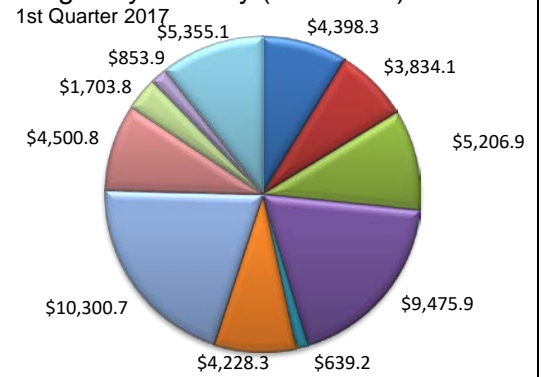


Industry Composition



Wages by Industry (in millions)



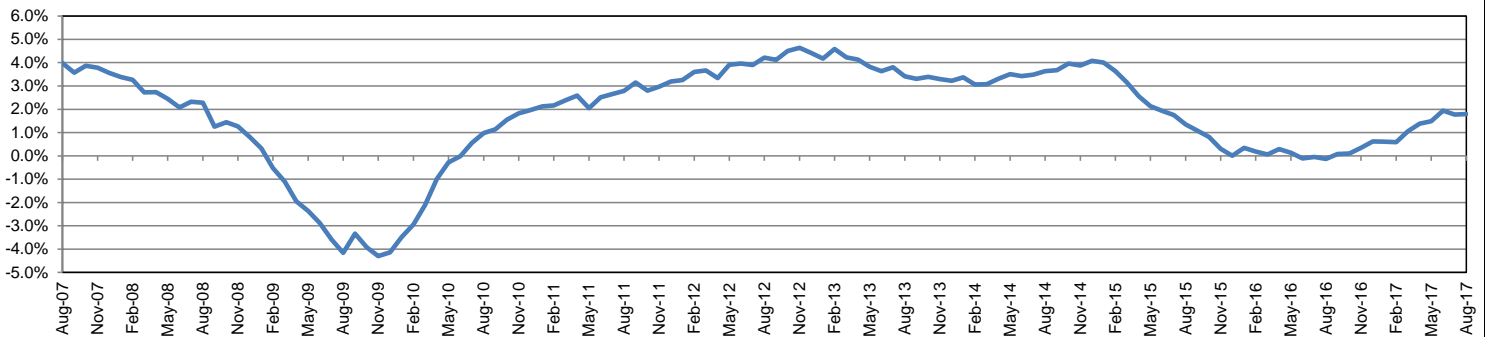
Employment by Industry

				Monthly Change		Annual Change	
	Aug-17	Jul-17	Aug-16	Actual	%	Actual	%
<b>Total Nonfarm</b>	<b>3,037,800</b>	<b>3,041,700</b>	<b>2,984,300</b>	<b>-3,900</b>	<b>-0.1%</b>	<b>53,500</b>	<b>1.8%</b>
Mining and Logging	87,000	87,400	86,400	-400	-0.5%	600	0.7%
Construction	211,700	210,700	216,200	1,000	0.5%	-4,500	-2.1%
Manufacturing	233,100	235,200	220,300	-2,100	-0.9%	12,800	5.8%
Trade, Transportation, and Utilities	604,100	603,700	609,200	400	0.1%	-5,100	-0.8%
Information	31,900	32,400	32,700	-500	-1.5%	-800	-2.4%
Financial Activities	158,700	157,800	156,200	900	0.6%	2,500	1.6%
Professional and Business Services	486,300	486,700	470,800	-400	-0.1%	15,500	3.3%
Education and Health Services	396,900	392,200	382,800	4,700	1.2%	14,100	3.7%
Leisure and Hospitality	328,000	329,200	317,800	-1,200	-0.4%	10,200	3.2%
Other Services	110,700	112,200	109,400	-1,500	-1.3%	1,300	1.2%
Government	389,400	394,200	382,500	-4,800	-1.2%	6,900	1.8%

Industry Size Class

Size Class	Employees per firm	Number of Firms	January 2017		
			Employment in Size Class	% Total Employment	
9	1000+	333	1,035,923	35.9%	
8	500-999	397	270,939	9.4%	
7	250-499	803	276,567	9.6%	
6	100-249	2,392	367,040	12.7%	
5	50-99	3,509	244,038	8.4%	
4	20-49	9,284	283,677	9.8%	
3	10-19	12,383	167,672	5.8%	
2	5-9	19,001	125,212	4.3%	
1	1-4	61,429	118,075	4.1%	
0	0	15,552	0	0.0%	
<b>Total</b>			<b>125,083</b>	<b>2,889,143</b>	<b>100.0%</b>

Annual Growth Rate for Total Nonagricultural Employment



Unemployment Information

(all estimates in thousands)

	Houston-The Woodlands-Sugar Land MSA				Texas (Actual)				United States (Actual)			
	C.L.F.	Emp.	Unemp.	Rate	C.L.F.	Emp.	Unemp.	Rate	C.L.F.	Emp.	Unemp.	Rate
Aug-17	3,307.7	3,137.2	170.6	5.2	13,406.8	12,802.0	604.8	4.5	160,863.0	153,576.0	7,287.0	4.5
Jul-17	3,319.7	3,157.0	162.7	4.9	13,434.6	12,850.6	584.0	4.3	161,911.0	154,470.0	7,441.0	4.6
Aug-16	3,286.9	3,099.0	187.9	5.7	13,295.2	12,639.0	656.2	4.9	159,800.0	151,804.0	7,996.0	5.0

Historical Unemployment Rates

