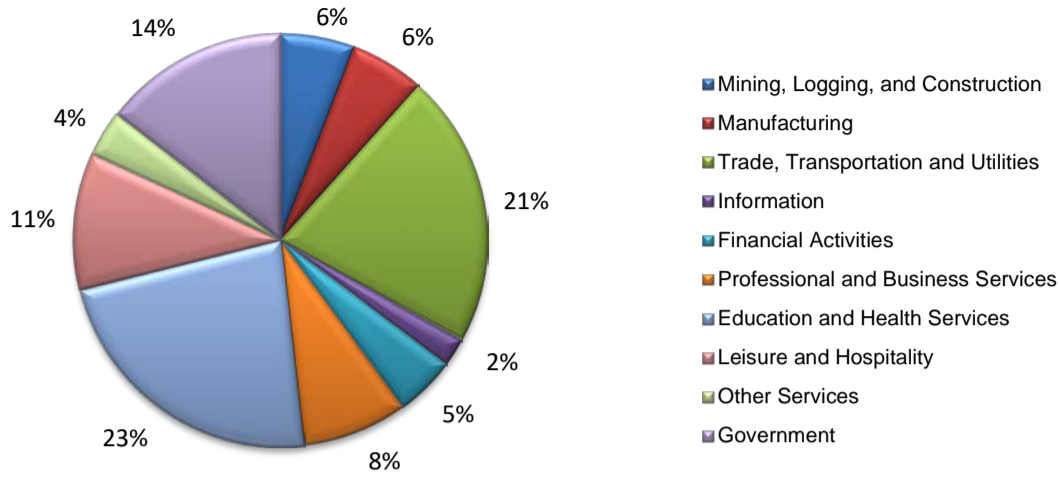
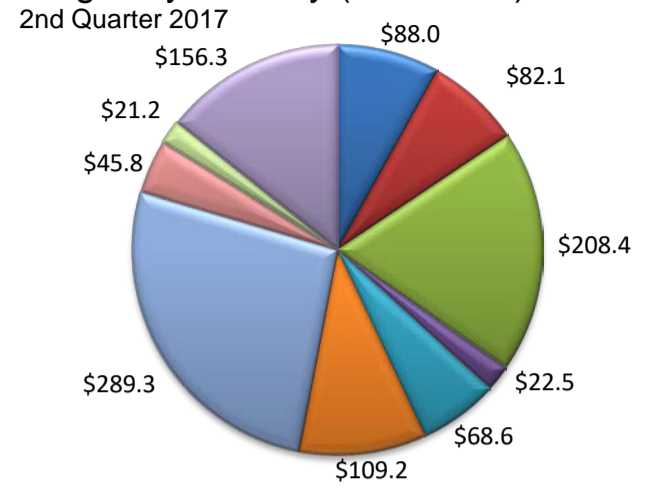


(Smith)

Industry Composition



Wages by Industry (in millions)



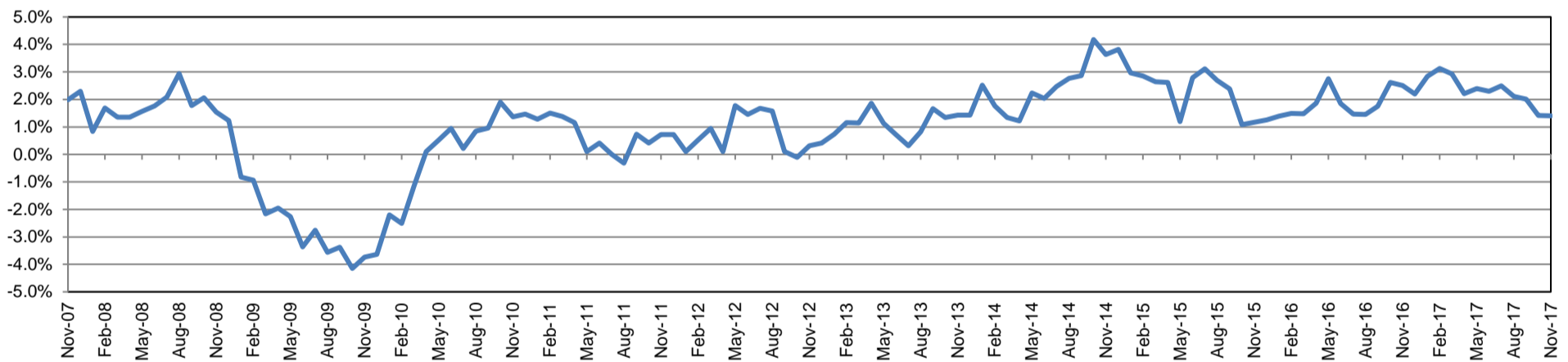
Employment by Industry

|                                      | Nov-17  | Oct-17  | Nov-16  | Monthly Change |       | Annual Change |       |
|--------------------------------------|---------|---------|---------|----------------|-------|---------------|-------|
|                                      |         |         |         | Actual         | %     | Actual        | %     |
| Total Nonfarm                        | 107,900 | 107,500 | 106,400 | 400            | 0.4%  | 1,500         | 1.4%  |
| Mining, Logging, and Construction    | 6,200   | 6,100   | 6,000   | 100            | 1.6%  | 200           | 3.3%  |
| Manufacturing                        | 6,300   | 6,400   | 6,200   | -100           | -1.6% | 100           | 1.6%  |
| Trade, Transportation, and Utilities | 23,100  | 23,000  | 23,000  | 100            | 0.4%  | 100           | 0.4%  |
| Information                          | 2,400   | 2,300   | 2,200   | 100            | 4.4%  | 200           | 9.1%  |
| Financial Activities                 | 5,100   | 5,100   | 5,100   | 0              | 0.0%  | 0             | 0.0%  |
| Professional and Business Services   | 8,900   | 8,900   | 9,000   | 0              | 0.0%  | -100          | -1.1% |
| Education and Health Services        | 24,700  | 24,700  | 23,800  | 0              | 0.0%  | 900           | 3.8%  |
| Leisure and Hospitality              | 11,600  | 11,600  | 11,700  | 0              | 0.0%  | -100          | -0.9% |
| Other Services                       | 3,900   | 3,900   | 4,100   | 0              | 0.0%  | -200          | -4.9% |
| Government                           | 15,700  | 15,500  | 15,300  | 200            | 1.3%  | 400           | 2.6%  |

Industry Size Class

| Size Class | Employees per firm | Number of Firms | June 2017                |                    |        |
|------------|--------------------|-----------------|--------------------------|--------------------|--------|
|            |                    |                 | Employment in Size Class | % Total Employment |        |
| 9          | 1000+              | 11              | 23,040                   | 22.3%              |        |
| 8          | 500-999            | 16              | 10,887                   | 10.5%              |        |
| 7          | 250-499            | 14              | 5,075                    | 4.9%               |        |
| 6          | 100-249            | 97              | 13,900                   | 13.4%              |        |
| 5          | 50-99              | 197             | 13,835                   | 13.4%              |        |
| 4          | 20-49              | 527             | 15,956                   | 15.4%              |        |
| 3          | 10-19              | 685             | 9,391                    | 9.1%               |        |
| 2          | 5-9                | 929             | 6,205                    | 6.0%               |        |
| 1          | 1-4                | 2,649           | 5,186                    | 5.0%               |        |
| 0          | 0                  | 463             | 0                        | 0.0%               |        |
| Total      |                    |                 | 5,588                    | 103,475            | 100.0% |

Annual Growth Rate for Total Nonagricultural Employment



Unemployment Information (all estimates in thousands)

|        | Tyler MSA |       |        |      | Texas (Actual) |          |        |      | United States (Actual) |           |         |      |
|--------|-----------|-------|--------|------|----------------|----------|--------|------|------------------------|-----------|---------|------|
|        | C.L.F.    | Emp.  | Unemp. | Rate | C.L.F.         | Emp.     | Unemp. | Rate | C.L.F.                 | Emp.      | Unemp.  | Rate |
| Nov-17 | 107.2     | 103.5 | 3.7    | 3.5  | 13,501.8       | 13,002.6 | 499.3  | 3.7  | 160,466.0              | 154,180.0 | 6,286.0 | 3.9  |
| Oct-17 | 107.2     | 103.0 | 4.2    | 3.9  | 13,392.5       | 12,922.8 | 469.7  | 3.5  | 160,465.0              | 154,223.0 | 6,242.0 | 3.9  |
| Nov-16 | 106.8     | 102.1 | 4.6    | 4.4  | 13,371.1       | 12,771.2 | 599.9  | 4.5  | 159,451.0              | 152,385.0 | 7,066.0 | 4.4  |

Historical Unemployment Rates

