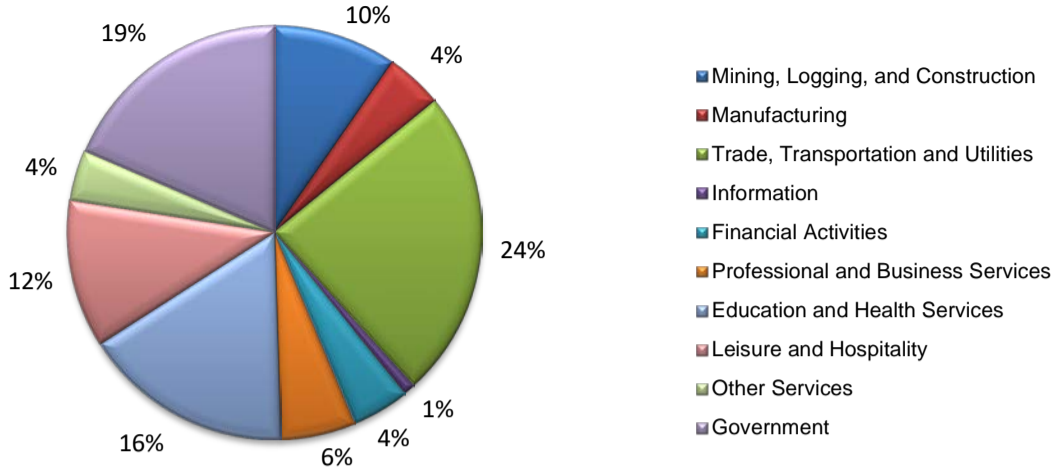
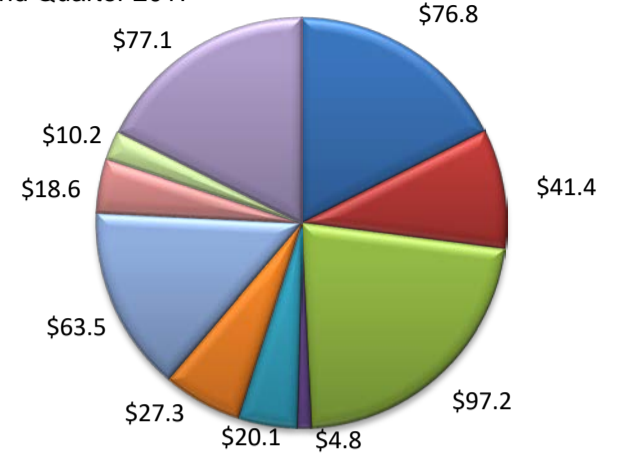


(Goliad, Victoria)

Industry Composition



Wages by Industry (in millions)
2nd Quarter 2017



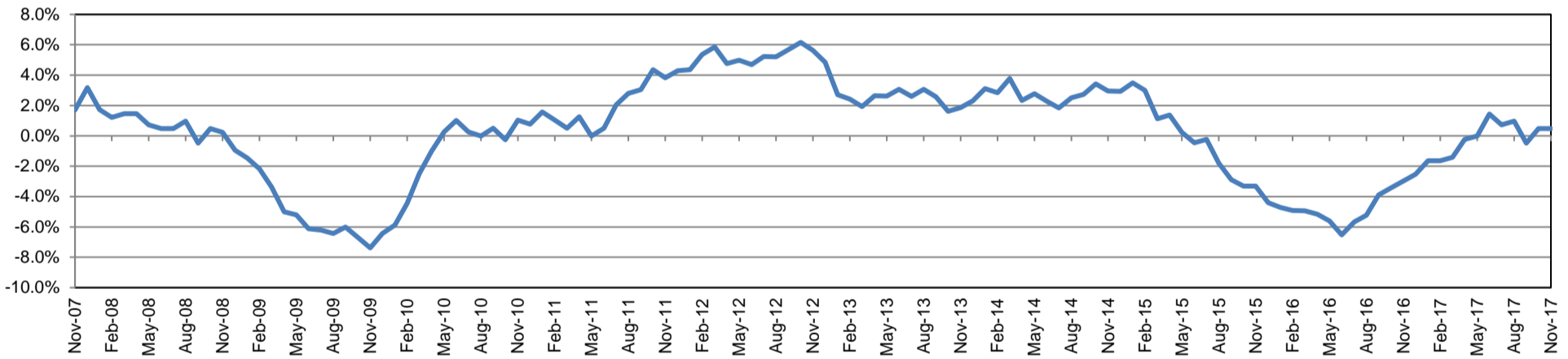
Employment by Industry

	Nov-17	Oct-17	Nov-16	Monthly Change		Annual Change	
				Actual	%	Actual	%
Total Nonfarm	42,600	42,500	42,400	100	0.2%	200	0.5%
Mining, Logging, and Construction	4,100	4,100	4,500	0	0.0%	-400	-8.9%
Manufacturing	1,900	1,900	2,000	0	0.0%	-100	-5.0%
Trade, Transportation, and Utilities	10,300	10,100	10,200	200	2.0%	100	1.0%
Information	400	400	400	0	0.0%	0	0.0%
Financial Activities	1,900	1,900	1,800	0	0.0%	100	5.6%
Professional and Business Services	2,500	2,500	2,600	0	0.0%	-100	-3.8%
Education and Health Services	7,000	7,000	6,800	0	0.0%	200	2.9%
Leisure and Hospitality	4,900	5,000	4,700	-100	-2.0%	200	4.3%
Other Services	1,700	1,700	1,600	0	0.0%	100	6.3%
Government	7,900	7,900	7,800	0	0.0%	100	1.3%

Industry Size Class

Size Class	Employees per firm	Number of Firms	June 2017	
			Employment in Size Class	% Total Employment
9	1000+	3	5,700	14.1%
8	500-999	5	2,973	7.3%
7	250-499	10	3,337	8.2%
6	100-249	36	5,283	13.0%
5	50-99	87	6,210	15.3%
4	20-49	233	7,160	17.7%
3	10-19	352	4,846	12.0%
2	5-9	443	2,905	7.2%
1	1-4	985	2,110	5.2%
0	0	175	0	0.0%
Total		2,329	40,524	100.0%

Annual Growth Rate for Total Nonagricultural Employment



Unemployment Information (all estimates in thousands)

	Victoria MSA				Texas (Actual)				United States (Actual)			
	C.L.F.	Emp.	Unemp.	Rate	C.L.F.	Emp.	Unemp.	Rate	C.L.F.	Emp.	Unemp.	Rate
Nov-17	46.9	44.9	1.9	4.1	13,501.8	13,002.6	499.3	3.7	160,466.0	154,180.0	6,286.0	3.9
Oct-17	46.6	44.7	1.8	4.0	13,392.5	12,922.8	469.7	3.5	160,465.0	154,223.0	6,242.0	3.9
Nov-16	47.3	44.8	2.5	5.4	13,371.1	12,771.2	599.9	4.5	159,451.0	152,385.0	7,066.0	4.4

Historical Unemployment Rates

