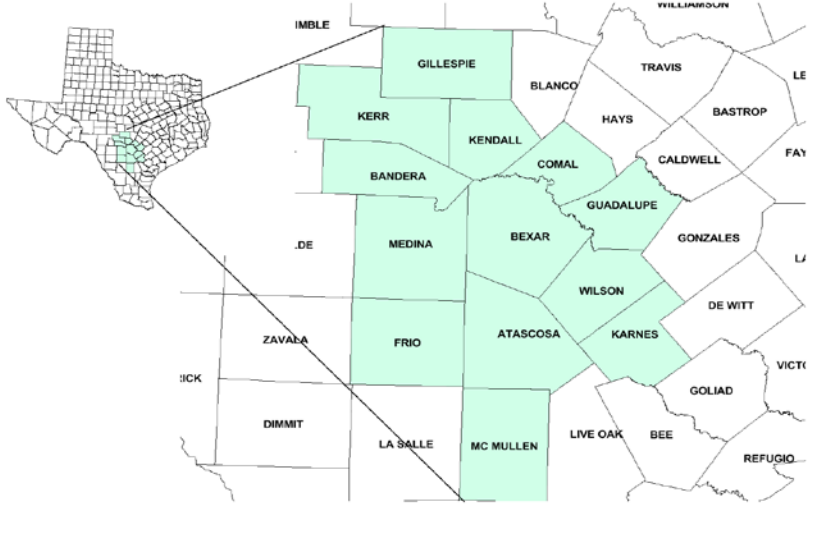


Alamo Workforce Development Area

April 2018



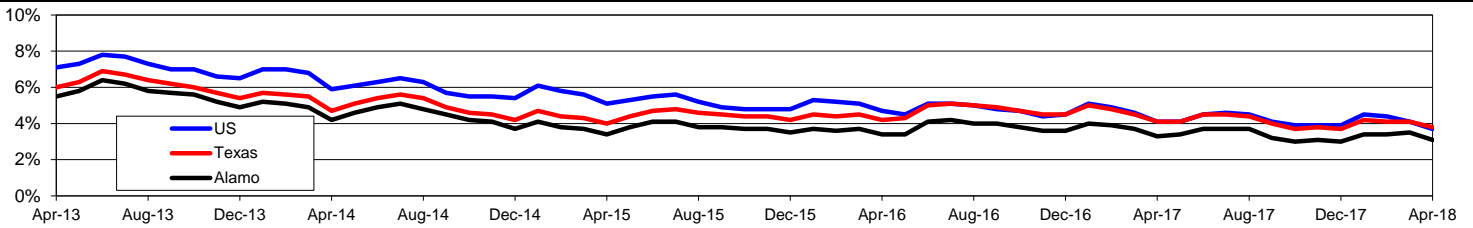
WDA Labor Force Statistics				
	Apr-18	Mar-18	Apr-17	OTY
CLF	1,240,934	1,240,191	1,212,295	28,639
Employed	1,202,245	1,197,400	1,172,528	29,717
Unemployed	38,689	42,791	39,767	-1,078
Rate	3.1%	3.5%	3.3%	-0.2%

Texas Labor Force Statistics				
	Apr-18	Mar-18	Apr-17	OTY
CLF	13,860,323	13,836,504	13,527,232	333,091
Employed	13,340,165	13,267,080	12,967,846	372,319
Unemployed	520,158	569,424	559,386	-39,228
Rate	3.8%	4.1%	4.1%	-0.3%

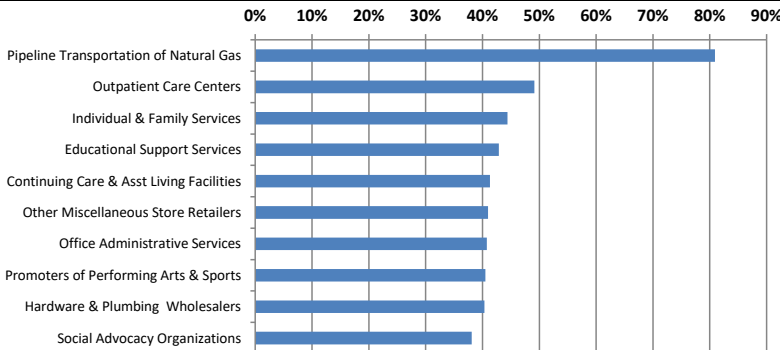
US Labor Force Statistics				
	Apr-18	Mar-18	Apr-17	OTY
CLF	161,280,000	161,548,000	159,817,000	1,463,000
Employed	155,348,000	154,877,000	153,262,000	2,086,000
Unemployed	5,932,000	6,671,000	6,555,000	-623,000
Rate	3.7%	4.1%	4.1%	-0.4%

Continued Claims for the Week of the 12th				
	Apr-18	Mar-18	Apr-17	OTY
WDA	5,666	6,272	6,894	-1,228
Texas	92,281	102,696	116,413	-24,132

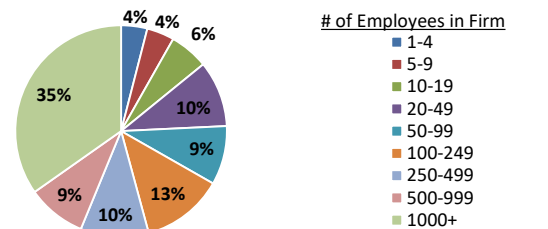
Historical Unemployment Rates



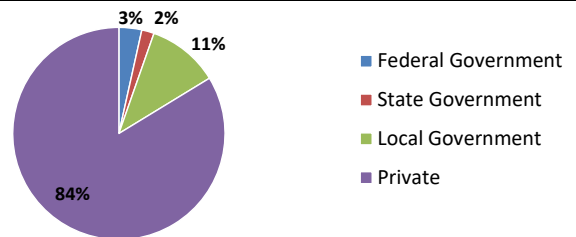
Projected Fastest Growing Industries in WDA (% growth 2014-2024)



Employment by Size Class (3rd Quarter 2017)



Employment by Ownership (3rd Quarter 2017)



Average Weekly Wage (3rd Quarter 2017)

	Q3 2017	Q2 2017	Q3 2016	Change	
				Quarter	Year
WDA	\$885	\$894	\$895	-\$9	-\$10
Texas	\$1,032	\$1,027	\$1,042	\$5	-\$10
US	\$1,021	\$1,020	\$1,027	\$1	-\$6

Employment by Industry (3rd Quarter 2017, Percent Change)

Industry	Employment	% of total	% Change	
			Quarter	Year
Natural resources and mining	12,288	1.2%	1.8%	14.3%
Construction	55,267	5.3%	-0.4%	0.4%
Manufacturing	50,848	4.9%	2.0%	3.6%
Trade, transportation and utilities	198,296	19.0%	0.7%	1.6%
Information	20,966	2.0%	-2.6%	-2.4%
Financial activities	85,615	8.2%	1.6%	2.4%
Professional and business services	134,143	12.9%	1.8%	2.7%
Education and health services	263,991	25.3%	-1.8%	1.6%
Leisure and hospitality	144,850	13.9%	0.9%	3.0%
Other services	30,046	2.9%	0.0%	2.5%
Public administration	45,085	4.3%	-0.2%	1.0%
Total	1,041,395	100.0%	0.2%	2.1%

Employment by Industry (3rd Quarter 2017)

