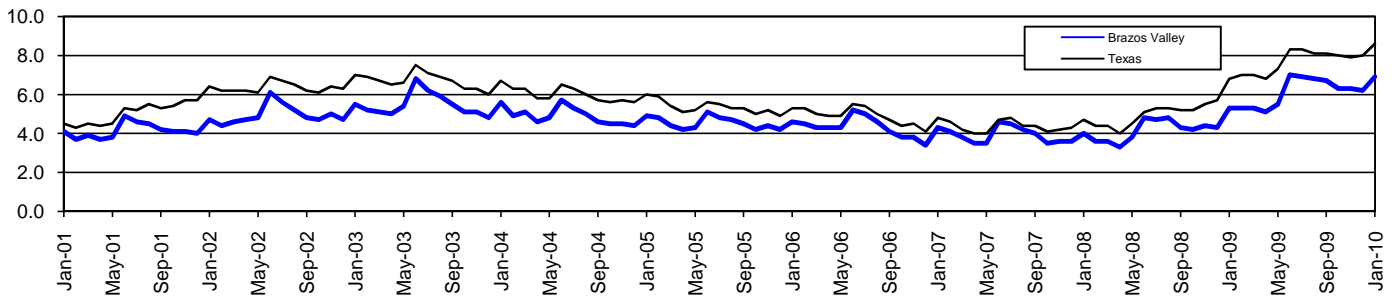


# Brazos Valley Workforce Development Area\*

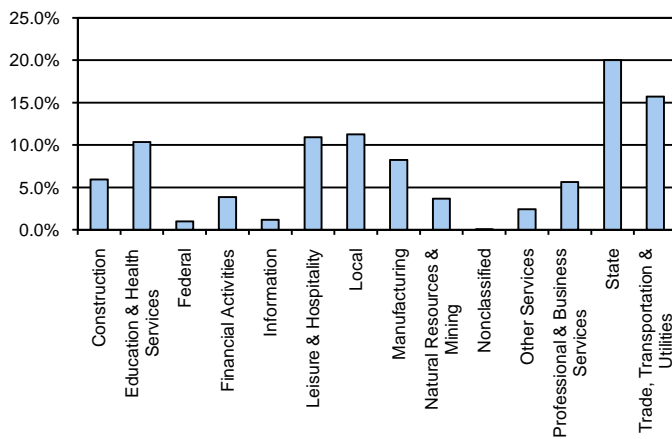
January 2010

Brazos Valley WDA					Texas				
	CLF	Employed	Unemployed	Rate		CLF	Employed	Unemployed	Rate
Jan-10	158,261	147,373	10,888	6.9	Jan-10	12,094,136	11,049,755	1,044,381	8.6
Dec-09	159,738	149,783	9,955	6.2	Dec-09	12,027,653	11,069,879	957,774	8.0
Jan-09	149,121	141,218	7,903	5.3	Jan-09	11,738,166	10,937,524	800,642	6.8

### Historical Unemployment Rates



### Brazos Valley WDA Industry Composition 3rd Quarter 2009



### Total WDA Claims

	Jan-10	Dec-09	Jan-09	OTY
Initial	766	759	704	62
Continued	3,953	4,035	2,580	1,373
Continued Claims for the Week of the 12th				
Continued	1,121	1,230	730	391

### Texas Unemployment Insurance Claims Filed

	Jan-10	Dec-09	Jan-09	OTY
Initial	108,752	100,826	125,284	-16,532
Continued	1,201,595	1,147,179	843,726	357,869
Continued Claims for the Week of the 12th				
Continued	254,414	266,245	202,492	51,922

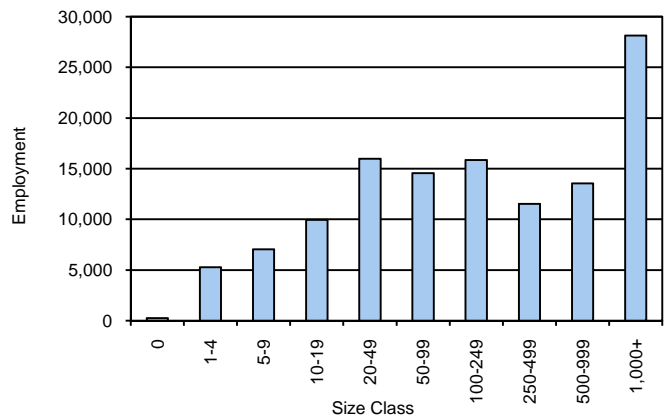
### Brazos Valley WDA Average Weekly Wage

	Brazos Valley	WDA Qtr. Chg.	Texas
3rd Quarter 2009	\$647.21	\$7.35	\$844.59
2nd Quarter 2009	\$639.86	WDA OTY Chg.	\$838.34
3rd Quarter 2008	\$651.18	-\$3.97	\$849.50

### NAICS Covered Employment Quarterly Data 3rd Quarter 2009

SUPER SECTOR	Employment	Change	
		Quarter	Year
Construction	7,215	24	-1,053
Education & Health Services	12,615	212	215
Federal	1,186	-52	1
Financial Activities	4,708	-57	-50
Information	1,391	15	-7
Leisure & Hospitality	13,299	-53	803
Local	13,756	-924	771
Manufacturing	10,021	-82	-728
Natural Resources & Mining	4,459	-275	-568
Nonclassified	25	-22	-3
Other Services	2,939	-46	69
Professional & Business Services	6,862	-55	-70
State	24,461	-1,623	800
Trade, Transportation & Utilities	19,197	168	-125
<b>TOTAL</b>	<b>122,134</b>	<b>-2,770</b>	<b>55</b>

### Size Class Employment Composition 3rd Quarter 2009



\*Counties in WDA: Brazos, Burleson, Grimes, Leon, Madison, Robertson, & Washington