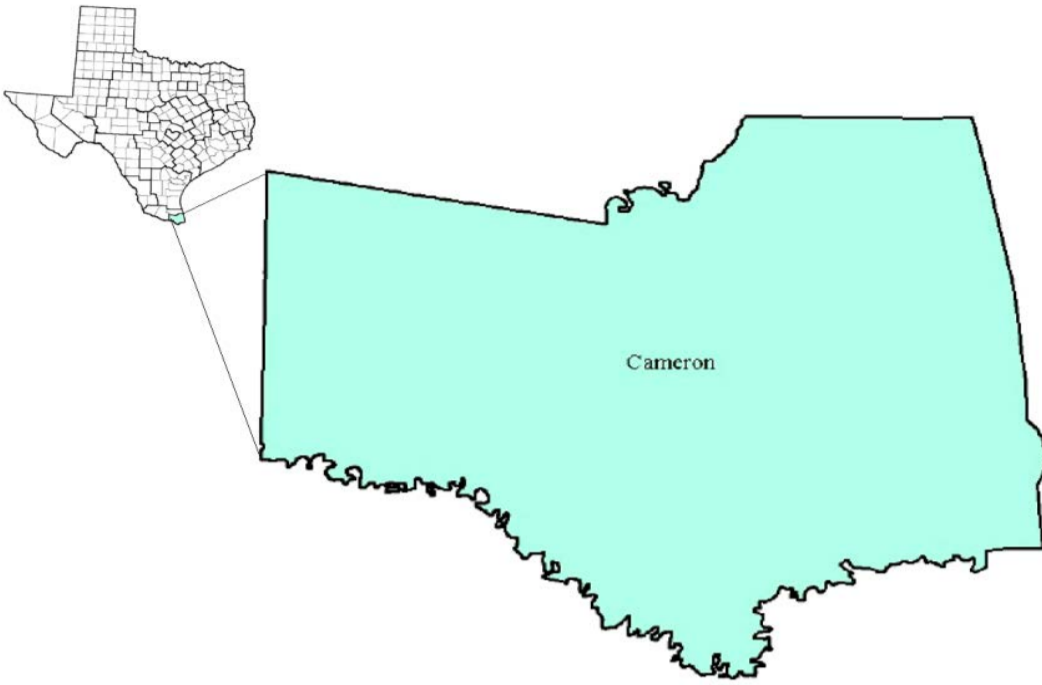


Cameron County Workforce Development Area

November 2017



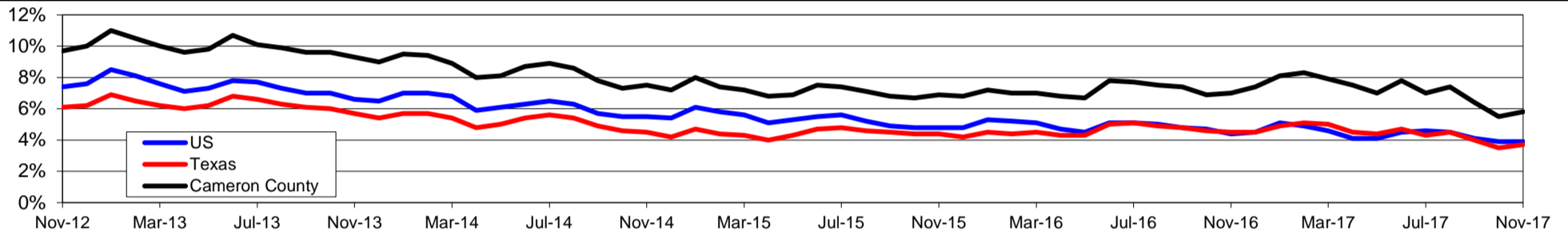
WDA Labor Force Statistics				
	Nov-17	Oct-17	Nov-16	OTY
CLF	164,110	163,137	166,597	-2,487
Employed	154,590	154,237	154,894	-304
Unemployed	9,520	8,900	11,703	-2,183
Rate	5.8%	5.5%	7.0%	-1.2%

Texas Labor Force Statistics				
	Nov-17	Oct-17	Nov-16	OTY
CLF	13,501,846	13,392,522	13,371,089	130,757
Employed	13,002,576	12,922,849	12,771,219	231,357
Unemployed	499,270	469,673	599,870	-100,600
Rate	3.7%	3.5%	4.5%	-0.8%

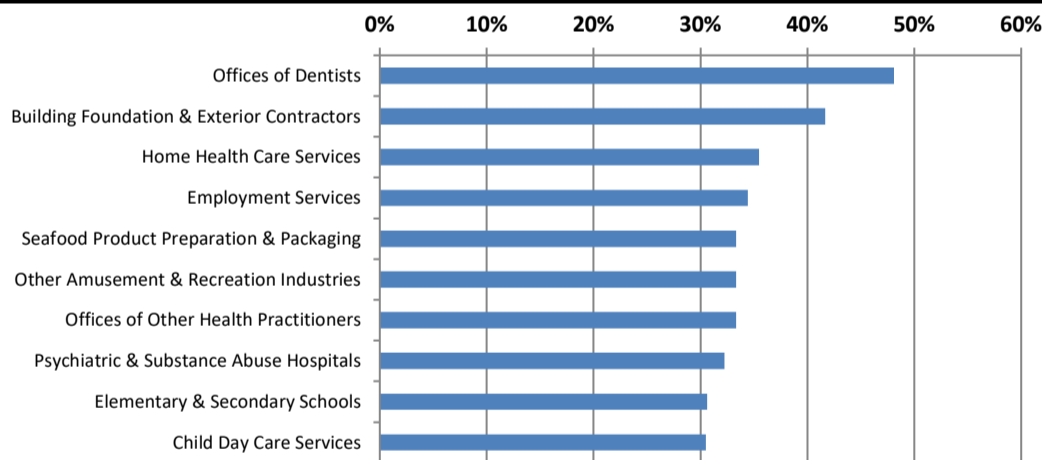
US Labor Force Statistics				
	Nov-17	Oct-17	Nov-16	OTY
CLF	160,466,000	160,465,000	159,451,000	1,015,000
Employed	154,180,000	154,223,000	152,385,000	1,795,000
Unemployed	6,286,000	6,242,000	7,066,000	-780,000
Rate	3.9%	3.9%	4.4%	-0.5%

Continued Claims for the Week of the 12th				
	Nov-17	Oct-17	Nov-16	OTY
WDA	2,142	2,014	2,840	-698
Texas	104,499	105,966	126,982	-22,483

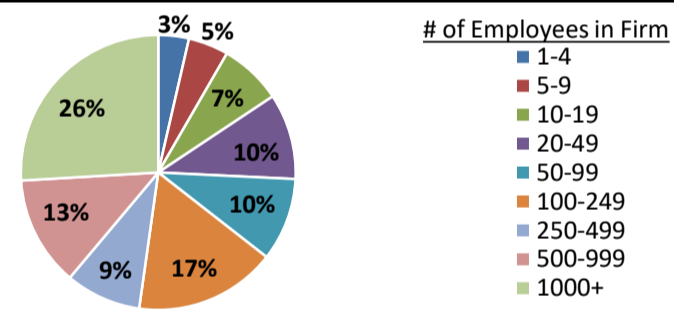
Historical Unemployment Rates



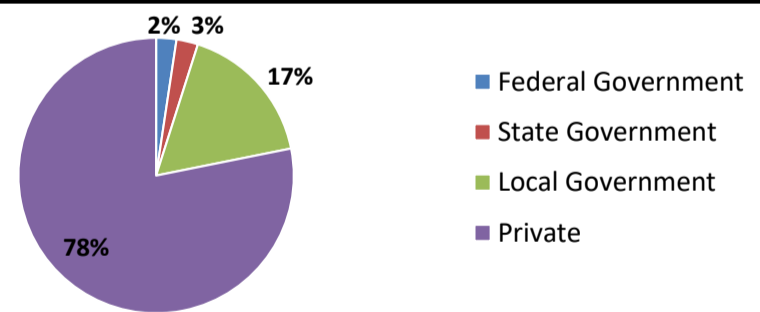
Projected Fastest Growing Industries in WDA (% growth 2014-2024)



Employment by Size Class (2nd Quarter 2017)



Employment by Ownership (2nd Quarter 2017)



Average Weekly Wage (2nd Quarter 2017)

	Q2 2017	Q1 2017	Q2 2016	Change	
				Quarter	Year
WDA	\$615	\$614	\$602	\$0	\$12
Texas	\$1,026	\$1,124	\$1,000	-\$99	\$25
US	N/A	\$1,111	\$988	N/A	N/A

Employment by Industry (2nd Quarter 2017, Percent Change)

Industry	Employment	% of total	% Change	
			Quarter	Year
Natural resources and mining	677	0.5%	4.0%	-2.2%
Construction	3,291	2.4%	3.5%	1.8%
Manufacturing	5,164	3.7%	0.8%	-6.8%
Trade, transportation and utilities	26,533	19.0%	-0.2%	-3.2%
Information	1,036	0.7%	-4.2%	-8.9%
Financial activities	4,938	3.5%	2.7%	-2.8%
Professional and business services	11,003	7.9%	-1.7%	-5.0%
Education and health services	60,784	43.6%	0.6%	3.7%
Leisure and hospitality	16,588	11.9%	7.4%	5.9%
Other services	2,307	1.7%	2.9%	-1.5%
Public administration	7,168	5.1%	1.3%	-1.7%
Total	139,489	100.0%	1.2%	0.7%

Employment by Industry (2nd Quarter 2017)

