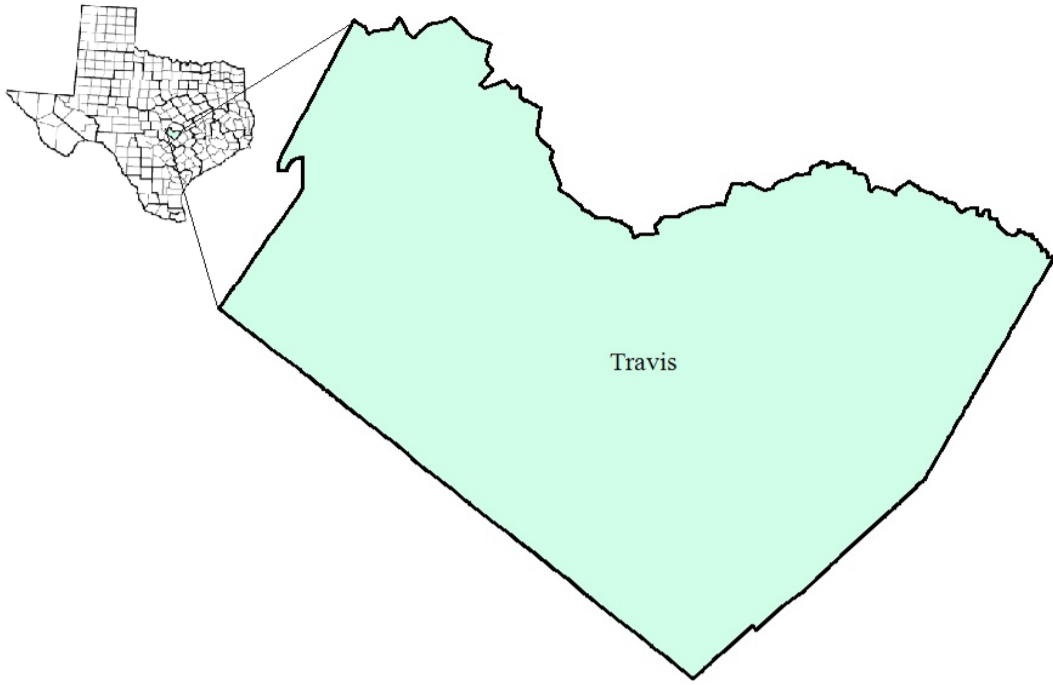


Capital Area Workforce Development Area

November 2017



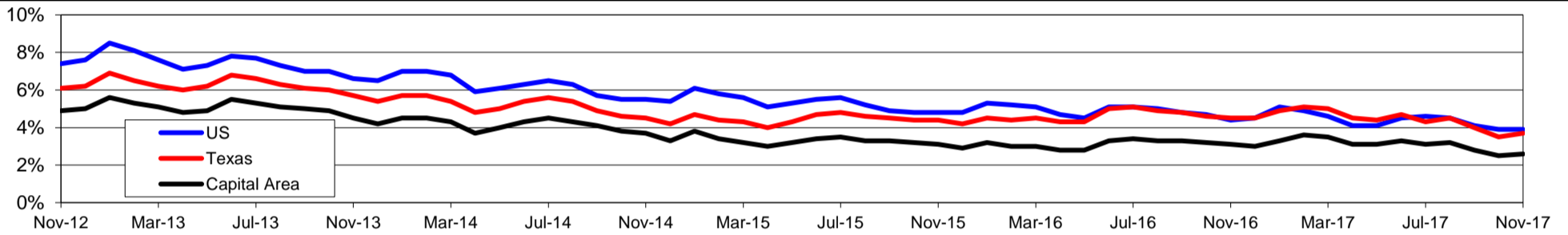
WDA Labor Force Statistics				
	Nov-17	Oct-17	Nov-16	OTY
CLF	700,726	692,556	687,080	13,646
Employed	682,268	675,336	665,805	16,463
Unemployed	18,458	17,220	21,275	-2,817
Rate	2.6%	2.5%	3.1%	-0.5%

Texas Labor Force Statistics				
	Nov-17	Oct-17	Nov-16	OTY
CLF	13,501,846	13,392,522	13,371,089	130,757
Employed	13,002,576	12,922,849	12,771,219	231,357
Unemployed	499,270	469,673	599,870	-100,600
Rate	3.7%	3.5%	4.5%	-0.8%

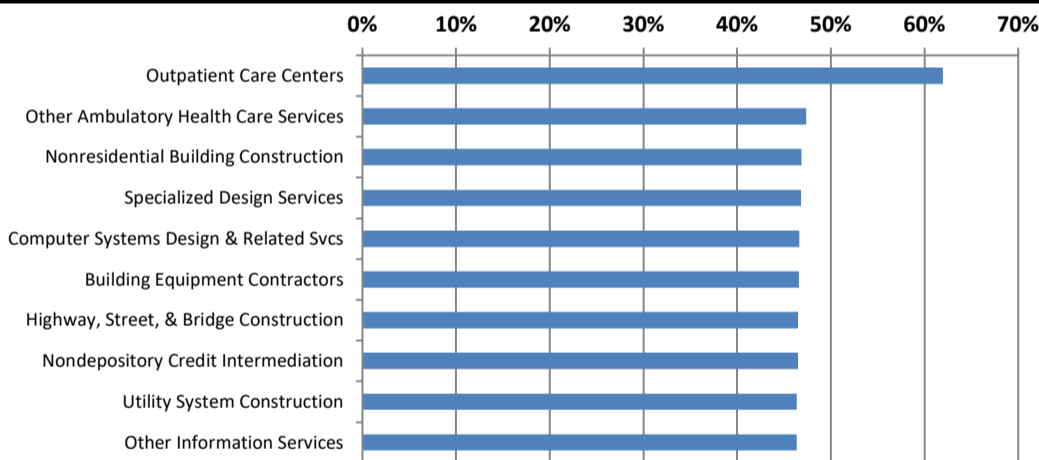
US Labor Force Statistics				
	Nov-17	Oct-17	Nov-16	OTY
CLF	160,466,000	160,465,000	159,451,000	1,015,000
Employed	154,180,000	154,223,000	152,385,000	1,795,000
Unemployed	6,286,000	6,242,000	7,066,000	-780,000
Rate	3.9%	3.9%	4.4%	-0.5%

Continued Claims for the Week of the 12th				
	Nov-17	Oct-17	Nov-16	OTY
WDA	3,363	3,522	3,806	-443
Texas	104,499	105,966	126,982	-22,483

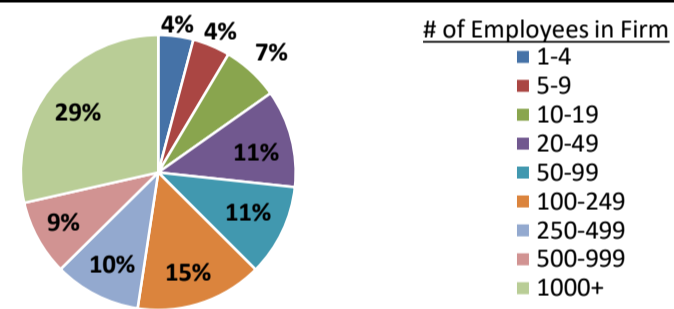
Historical Unemployment Rates



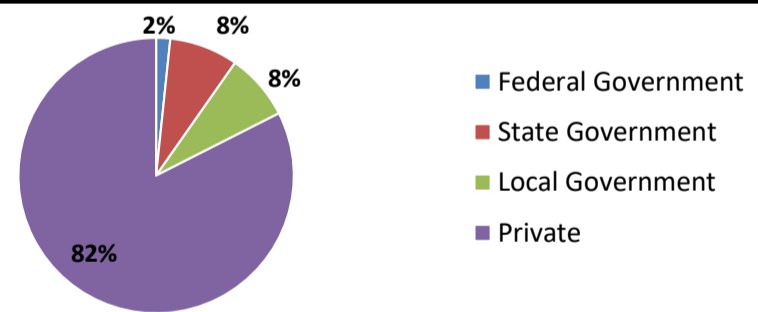
Projected Fastest Growing Industries in WDA (% growth 2014-2024)



Employment by Size Class (2nd Quarter 2017)



Employment by Ownership (2nd Quarter 2017)



Average Weekly Wage (2nd Quarter 2017)

	Q2 2017	Q1 2017	Q2 2016	Change	
				Quarter	Year
WDA	\$1,184	\$1,251	\$1,120	-\$67	\$64
Texas	\$1,026	\$1,124	\$1,000	-\$99	\$25
US	N/A	\$1,111	\$988	N/A	N/A

Employment by Industry (2nd Quarter 2017, Percent Change)

Industry	Employment	% of total	% Change	
			Quarter	Year
Natural resources and mining	2,356	0.3%	4.1%	3.4%
Construction	41,869	5.8%	3.4%	4.6%
Manufacturing	38,425	5.3%	2.3%	3.1%
Trade, transportation and utilities	115,148	15.9%	1.0%	2.6%
Information	26,104	3.6%	0.7%	3.7%
Financial activities	47,753	6.6%	2.0%	6.6%
Professional and business services	138,877	19.1%	1.9%	2.3%
Education and health services	142,206	19.6%	0.7%	1.9%
Leisure and hospitality	93,962	12.9%	3.5%	2.9%
Other services	26,377	3.6%	2.8%	3.1%
Public administration	52,719	7.3%	0.7%	4.5%
Total	725,796	100.0%	1.8%	3.0%

Employment by Industry (2nd Quarter 2017)

