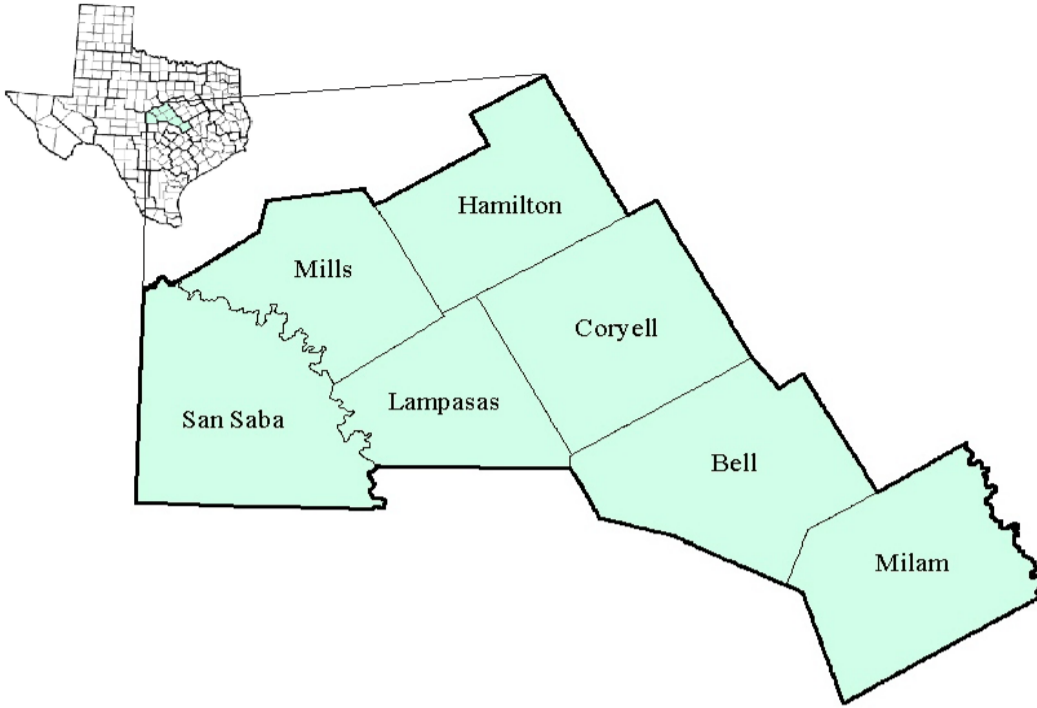


Central Texas Workforce Development Area

January 2018



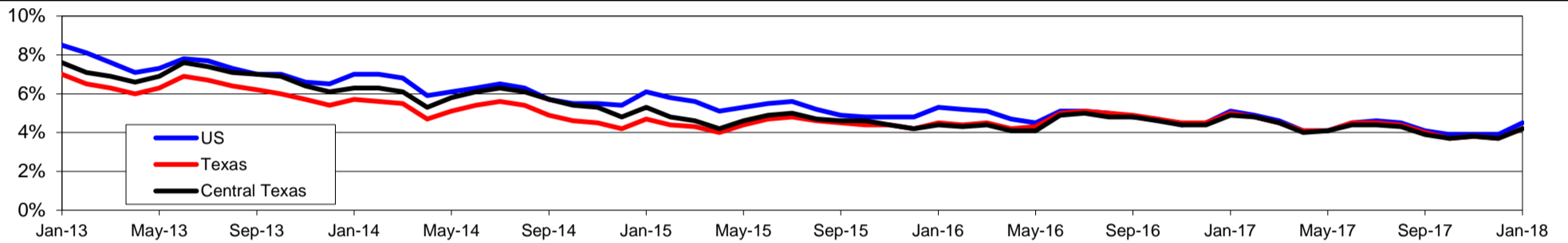
WDA Labor Force Statistics				
	Jan-18	Dec-17	Jan-17	OTY
CLF	192,809	192,366	192,761	48
Employed	184,773	185,324	183,357	1,416
Unemployed	8,036	7,042	9,404	-1,368
Rate	4.2%	3.7%	4.9%	-0.7%

Texas Labor Force Statistics				
	Jan-18	Dec-17	Jan-17	OTY
CLF	13,622,067	13,598,061	13,417,349	204,718
Employed	13,054,089	13,096,216	12,748,985	305,104
Unemployed	567,978	501,845	668,364	-100,386
Rate	4.2%	3.7%	5.0%	-0.8%

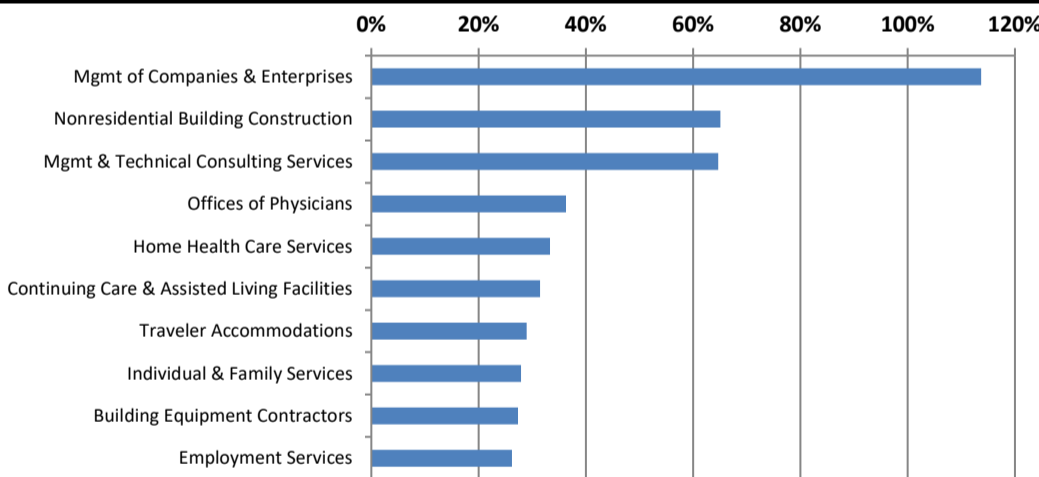
US Labor Force Statistics				
	Jan-18	Dec-17	Jan-17	OTY
CLF	160,037,000	159,880,000	158,676,000	1,361,000
Employed	152,848,000	153,602,000	150,527,000	2,321,000
Unemployed	7,189,000	6,278,000	8,149,000	-960,000
Rate	4.5%	3.9%	5.1%	-0.6%

Continued Claims for the Week of the 12th				
	Jan-18	Dec-17	Jan-17	OTY
WDA	1,346	1,260	1,565	-219
Texas	111,828	108,432	132,086	-20,258

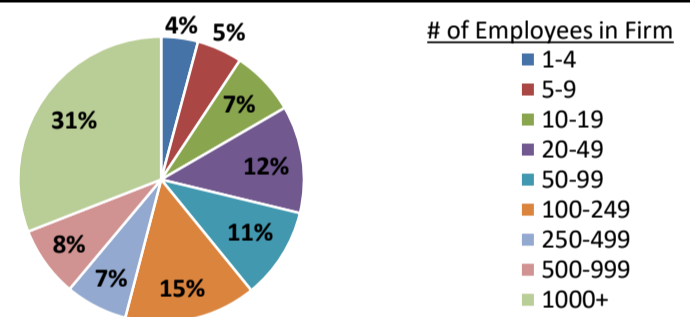
Historical Unemployment Rates



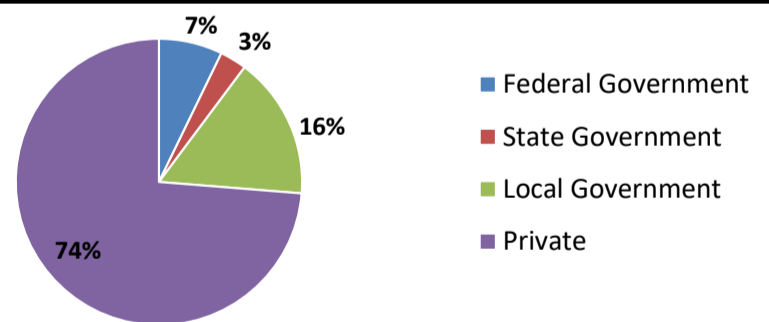
Projected Fastest Growing Industries in WDA (% growth 2014-2024)



Employment by Size Class (3rd Quarter 2017)



Employment by Ownership (3rd Quarter 2017)



Average Weekly Wage (3rd Quarter 2017)

	Q3 2017	Q2 2017	Q3 2016	Change	
				Quarter	Year
WDA	\$835	\$846	\$839	-\$12	-\$4
Texas	\$1,032	\$1,027	\$1,042	\$5	-\$10
US	\$1,021	\$1,020	\$1,027	\$1	-\$6

Employment by Industry (3rd Quarter 2017, Percent Change)

Industry	Employment	% of total	% Change	
			Quarter	Year
Natural resources and mining	1,231	0.8%	0.3%	-4.6%
Construction	7,668	5.1%	-0.7%	-0.6%
Manufacturing	8,071	5.4%	-0.2%	-0.3%
Trade, transportation and utilities	31,811	21.2%	-0.3%	2.7%
Information	1,362	0.9%	-1.4%	-7.7%
Financial activities	7,341	4.9%	2.9%	1.0%
Professional and business services	10,910	7.3%	0.1%	3.0%
Education and health services	49,806	33.2%	-3.1%	1.1%
Leisure and hospitality	16,939	11.3%	0.6%	4.9%
Other services	4,325	2.9%	-0.3%	-4.4%
Public administration	10,693	7.1%	-0.6%	-3.7%
Total	150,157	100.0%	-1.0%	1.2%

Employment by Industry (3rd Quarter 2017)

