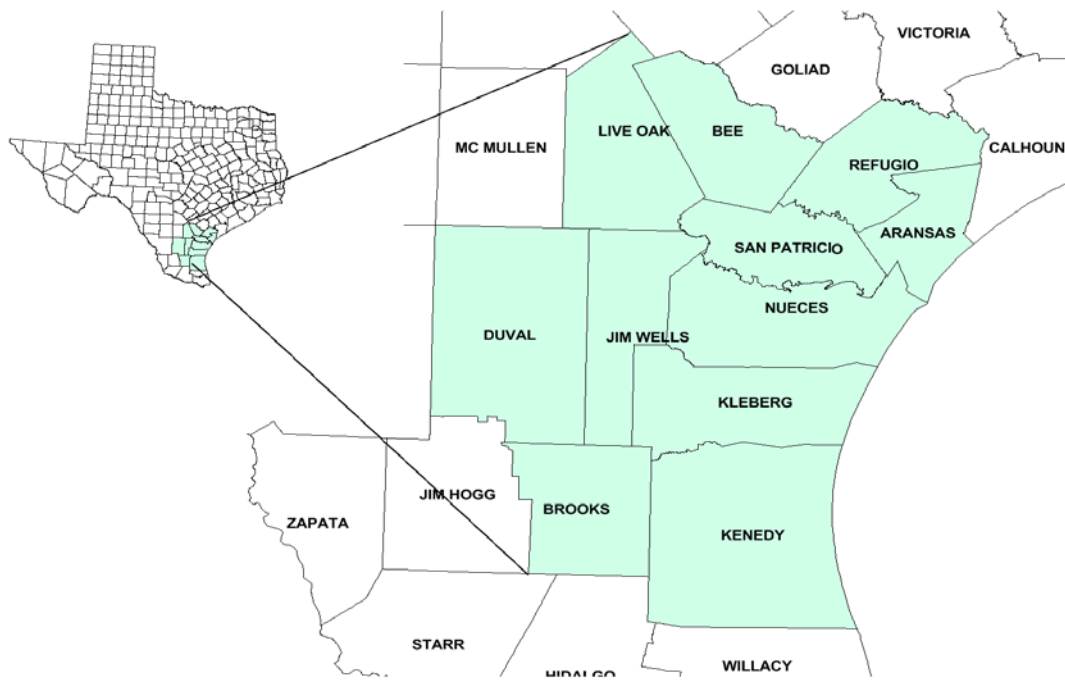


Coastal Bend Workforce Development Area

November 2017



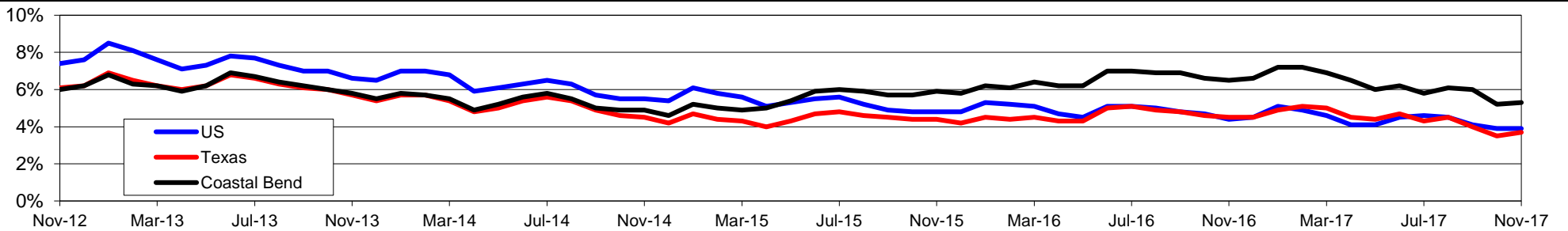
| WDA Labor Force Statistics | | | | |
|----------------------------|---------|---------|---------|--------|
| | Nov-17 | Oct-17 | Nov-16 | OTY |
| CLF | 263,434 | 261,798 | 262,005 | 1,429 |
| Employed | 249,349 | 248,231 | 245,002 | 4,347 |
| Unemployed | 14,085 | 13,567 | 17,003 | -2,918 |
| Rate | 5.3% | 5.2% | 6.5% | -1.2% |

| Texas Labor Force Statistics | | | | |
|------------------------------|------------|------------|------------|----------|
| | Nov-17 | Oct-17 | Nov-16 | OTY |
| CLF | 13,501,846 | 13,392,522 | 13,371,089 | 130,757 |
| Employed | 13,002,576 | 12,922,849 | 12,771,219 | 231,357 |
| Unemployed | 499,270 | 469,673 | 599,870 | -100,600 |
| Rate | 3.7% | 3.5% | 4.5% | -0.8% |

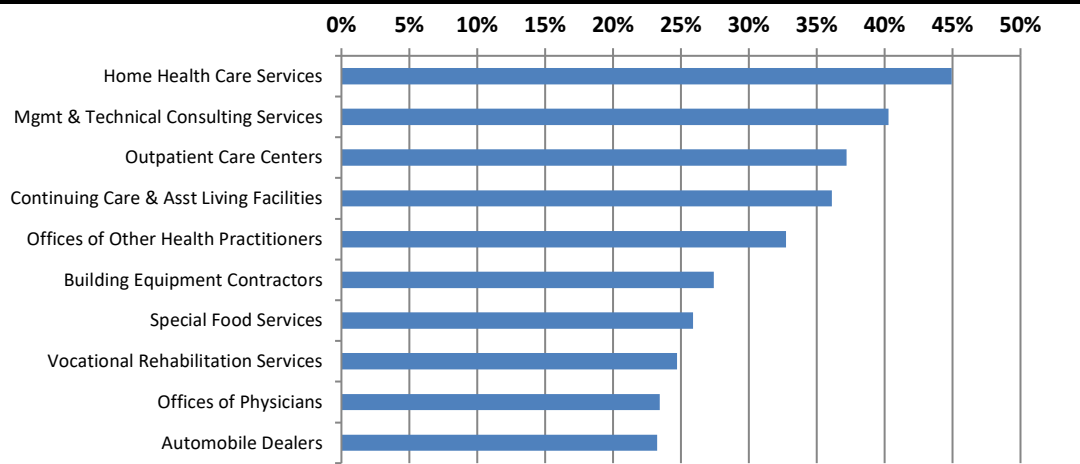
| US Labor Force Statistics | | | | |
|---------------------------|-------------|-------------|-------------|-----------|
| | Nov-17 | Oct-17 | Nov-16 | OTY |
| CLF | 160,466,000 | 160,465,000 | 159,451,000 | 1,015,000 |
| Employed | 154,180,000 | 154,223,000 | 152,385,000 | 1,795,000 |
| Unemployed | 6,286,000 | 6,242,000 | 7,066,000 | -780,000 |
| Rate | 3.9% | 3.9% | 4.4% | -0.5% |

| Continued Claims for the Week of the 12th | | | | |
|---|---------|---------|---------|---------|
| | Nov-17 | Oct-17 | Nov-16 | OTY |
| WDA | 3,781 | 3,904 | 4,167 | -386 |
| Texas | 104,499 | 105,966 | 126,982 | -22,483 |

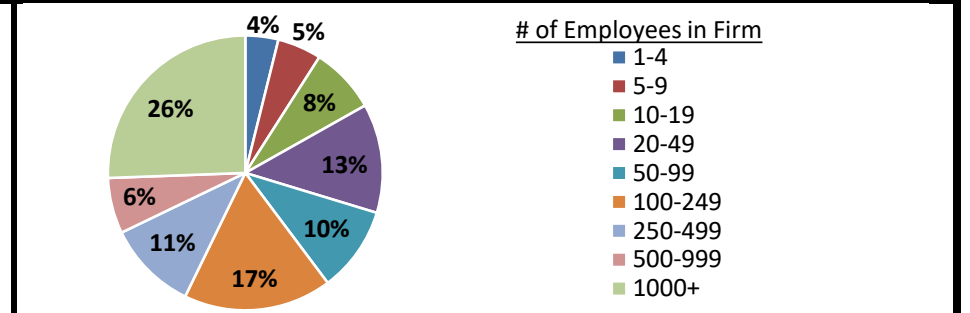
Historical Unemployment Rates



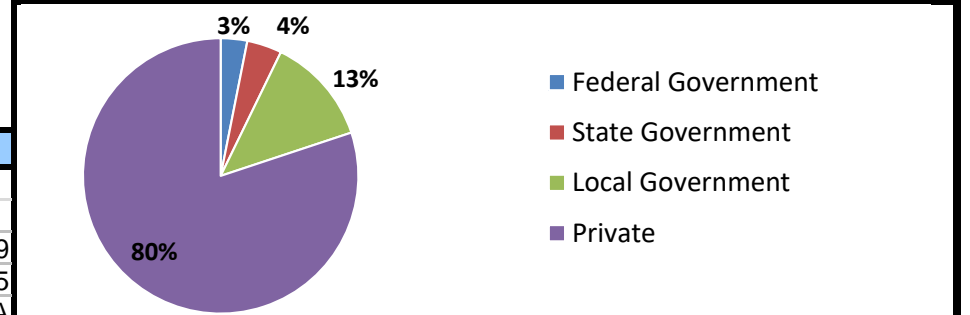
Projected Fastest Growing Industries in WDA (% growth 2014-2024)



Employment by Size Class (2nd Quarter 2017)



Employment by Ownership (2nd Quarter 2017)



Average Weekly Wage (2nd Quarter 2017)

| | Wage | | | Change | |
|-------|---------|---------|---------|---------|------|
| | Q2 2017 | Q1 2017 | Q2 2016 | Quarter | Year |
| WDA | \$837 | \$879 | \$818 | -\$42 | \$19 |
| Texas | \$1,026 | \$1,124 | \$1,000 | -\$99 | \$25 |
| US | N/A | \$1,111 | \$988 | N/A | N/A |

Employment by Industry (2nd Quarter 2017, Percent Change)

| Industry | Employment | % of total | % Change | |
|-------------------------------------|----------------|---------------|-------------|-------------|
| | | | Quarter | Year |
| Natural resources and mining | 10,469 | 4.4% | 6.9% | 11.4% |
| Construction | 24,645 | 10.3% | -0.1% | 6.8% |
| Manufacturing | 12,376 | 5.2% | -1.1% | -6.1% |
| Trade, transportation and utilities | 43,129 | 18.1% | 0.8% | -1.7% |
| Information | 2,119 | 0.9% | -0.9% | -5.8% |
| Financial activities | 9,417 | 4.0% | 1.8% | 0.1% |
| Professional and business services | 18,424 | 7.7% | 0.1% | -0.4% |
| Education and health services | 66,756 | 28.0% | 0.1% | 1.9% |
| Leisure and hospitality | 32,659 | 13.7% | 6.5% | 0.3% |
| Other services | 6,127 | 2.6% | 1.9% | -5.9% |
| Public administration | 12,027 | 5.1% | 0.1% | 0.7% |
| Total | 238,148 | 100.0% | 1.4% | 0.8% |

Employment by Industry (2nd Quarter 2017)

