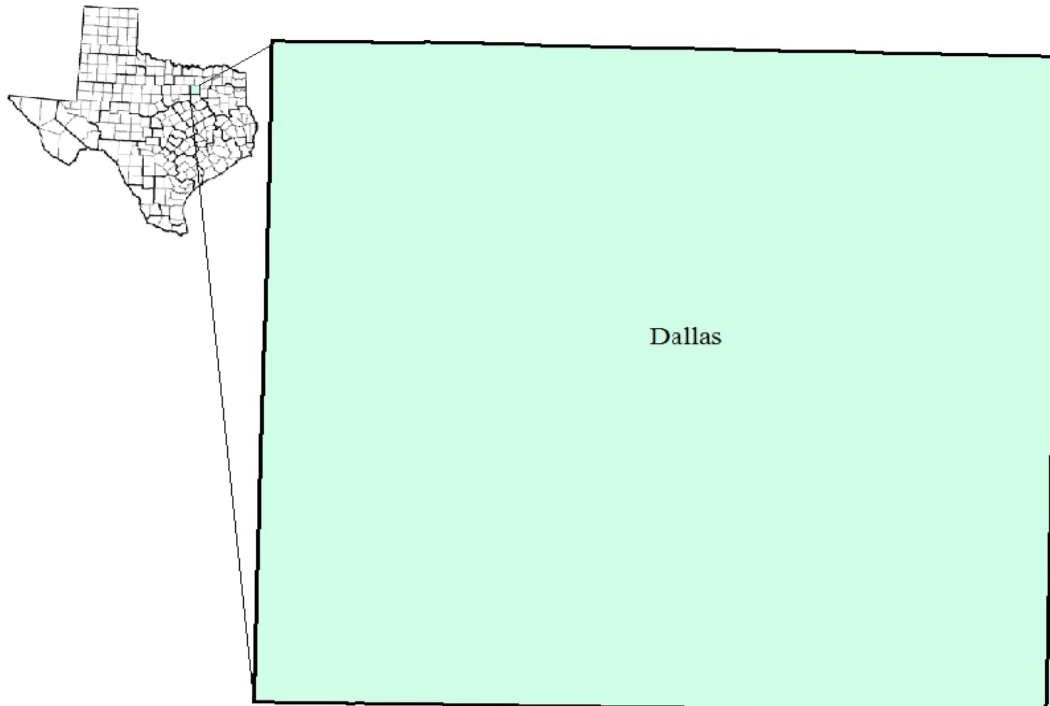


# Dallas County Workforce Development Area

## January 2018



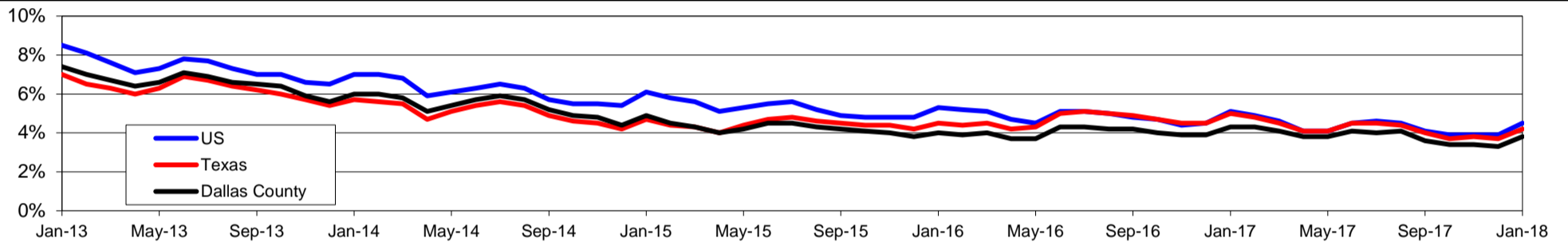
WDA Labor Force Statistics				
	Jan-18	Dec-17	Jan-17	OTY
CLF	1,346,966	1,346,137	1,316,754	30,212
Employed	1,295,746	1,301,231	1,260,489	35,257
Unemployed	51,220	44,906	56,265	-5,045
Rate	3.8%	3.3%	4.3%	-0.5%

Texas Labor Force Statistics				
	Jan-18	Dec-17	Jan-17	OTY
CLF	13,622,067	13,598,061	13,417,349	204,718
Employed	13,054,089	13,096,216	12,748,985	305,104
Unemployed	567,978	501,845	668,364	-100,386
Rate	4.2%	3.7%	5.0%	-0.8%

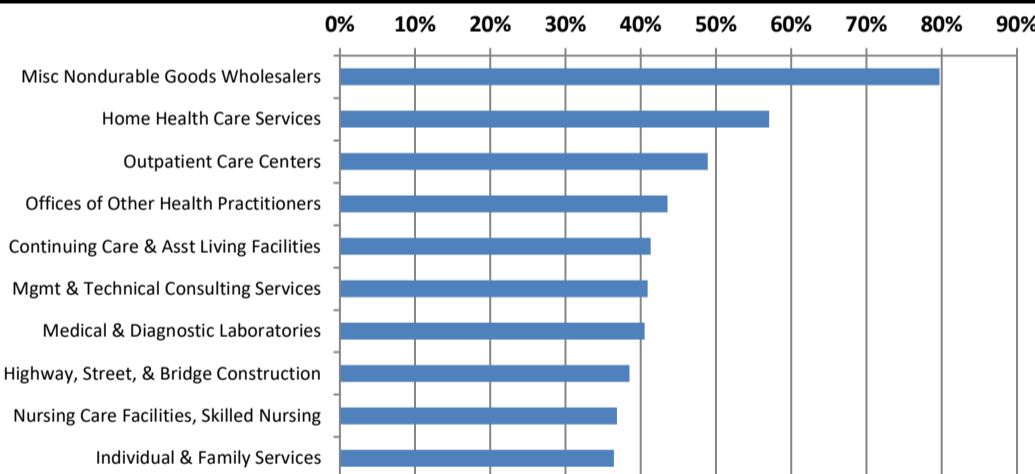
US Labor Force Statistics				
	Jan-18	Dec-17	Jan-17	OTY
CLF	160,037,000	159,880,000	158,676,000	1,361,000
Employed	152,848,000	153,602,000	150,527,000	2,321,000
Unemployed	7,189,000	6,278,000	8,149,000	-960,000
Rate	4.5%	3.9%	5.1%	-0.6%

Continued Claims for the Week of the 12th				
	Jan-18	Dec-17	Jan-17	OTY
WDA	10,520	9,990	10,790	-270
Texas	111,828	108,432	132,086	-20,258

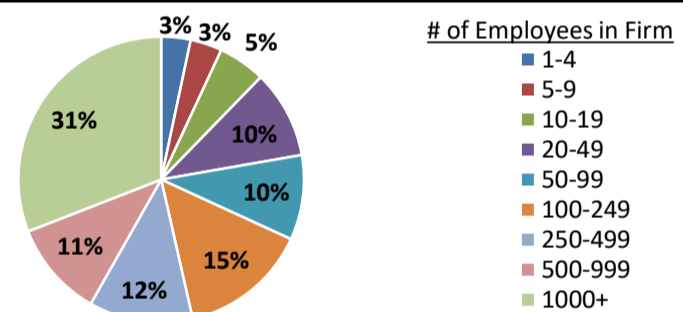
### Historical Unemployment Rates



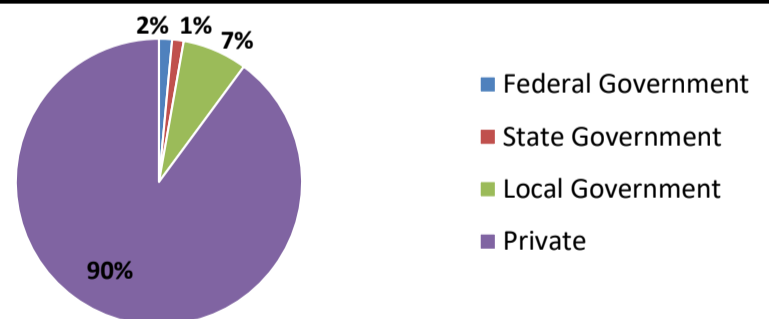
### Projected Fastest Growing Industries in WDA (% growth 2014-2024)



### Employment by Size Class (3rd Quarter 2017)



### Employment by Ownership (3rd Quarter 2017)



### Average Weekly Wage (3rd Quarter 2017)

	Q3 2017	Q2 2017	Q3 2016	Change	
				Quarter	Year
WDA	\$1,213	\$1,214	\$1,238	-\$1	-\$25
Texas	\$1,032	\$1,027	\$1,042	\$5	-\$10
US	\$1,021	\$1,020	\$1,027	\$1	-\$6

### Employment by Industry (3rd Quarter 2017, Percent Change)

Industry	Employment	% of total	% Change	
			Quarter	Year
Natural resources and mining	8,738	0.5%	3.6%	1.2%
Construction	91,915	5.4%	1.0%	3.1%
Manufacturing	113,186	6.7%	1.2%	3.6%
Trade, transportation and utilities	364,716	21.6%	1.3%	2.0%
Information	49,508	2.9%	0.4%	-1.4%
Financial activities	166,768	9.9%	0.8%	4.1%
Professional and business services	343,643	20.4%	1.0%	1.0%
Education and health services	301,051	17.8%	-1.1%	1.2%
Leisure and hospitality	166,210	9.9%	-0.1%	0.8%
Other services	43,162	2.6%	-0.5%	0.7%
Public administration	37,748	2.2%	-0.8%	0.1%
<b>Total</b>	<b>1,686,645</b>	<b>100.0%</b>	<b>0.5%</b>	<b>1.7%</b>

### Employment by Industry (3rd Quarter 2017)

