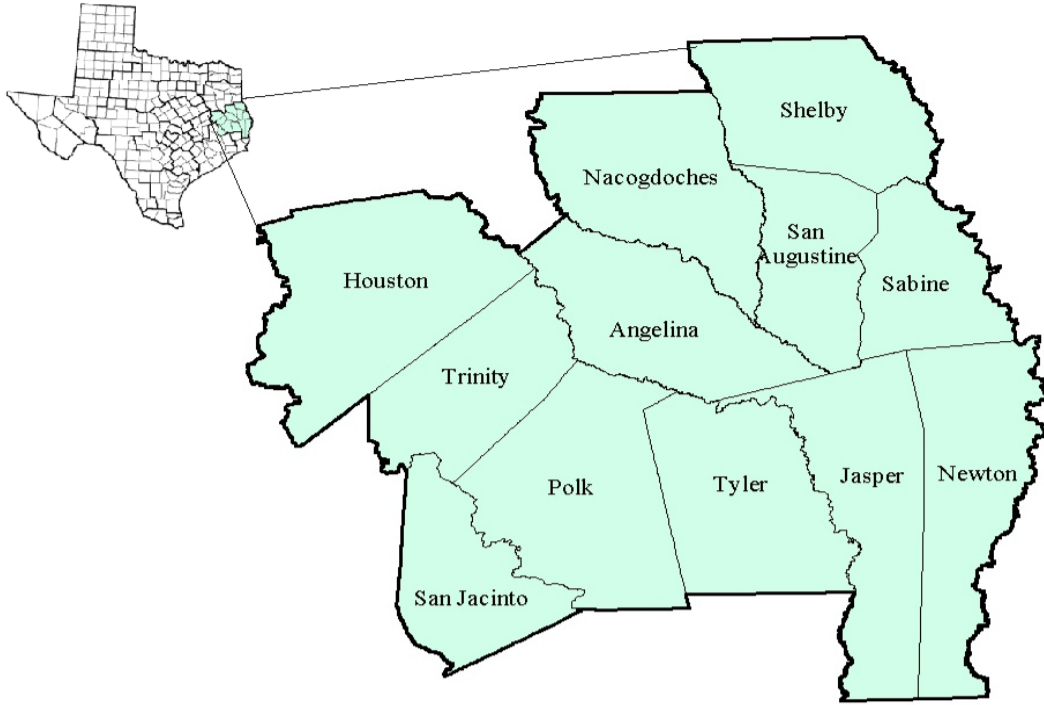


Deep East Texas Workforce Development Area

January 2018



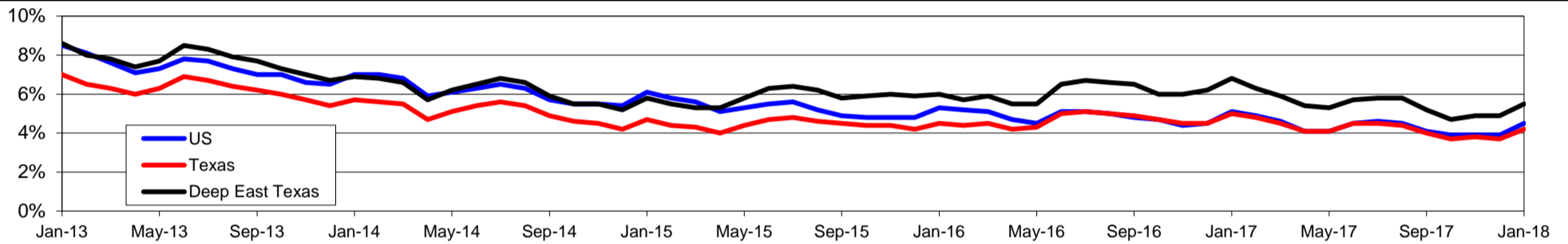
WDA Labor Force Statistics				
	Jan-18	Dec-17	Jan-17	OTY
CLF	152,654	151,773	153,139	-485
Employed	144,213	144,333	142,758	1,455
Unemployed	8,441	7,440	10,381	-1,940
Rate	5.5%	4.9%	6.8%	-1.3%

Texas Labor Force Statistics				
	Jan-18	Dec-17	Jan-17	OTY
CLF	13,622,067	13,598,061	13,417,349	204,718
Employed	13,054,089	13,096,216	12,748,985	305,104
Unemployed	567,978	501,845	668,364	-100,386
Rate	4.2%	3.7%	5.0%	-0.8%

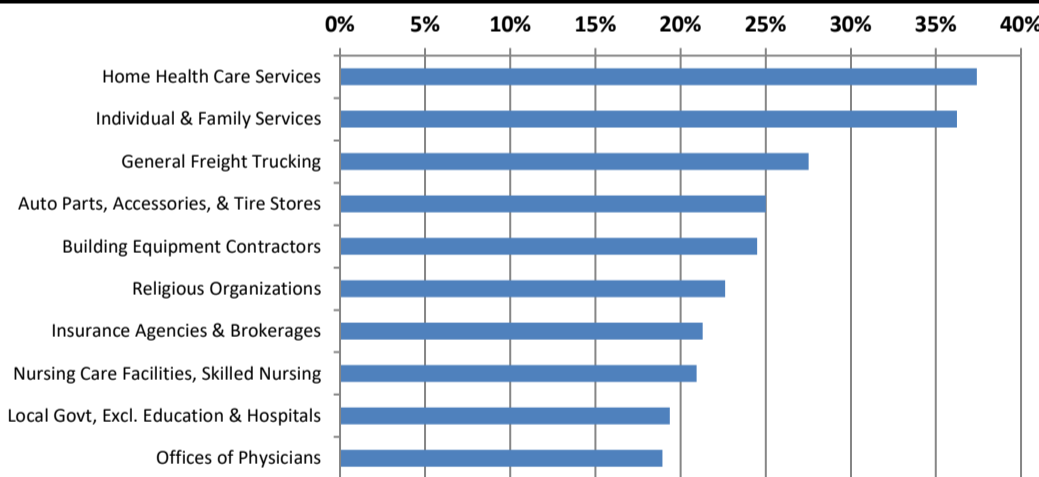
US Labor Force Statistics				
	Jan-18	Dec-17	Jan-17	OTY
CLF	160,037,000	159,880,000	158,676,000	1,361,000
Employed	152,848,000	153,602,000	150,527,000	2,321,000
Unemployed	7,189,000	6,278,000	8,149,000	-960,000
Rate	4.5%	3.9%	5.1%	-0.6%

Continued Claims for the Week of the 12th				
	Jan-18	Dec-17	Jan-17	OTY
WDA	1,733	1,706	2,279	-546
Texas	111,828	108,432	132,086	-20,258

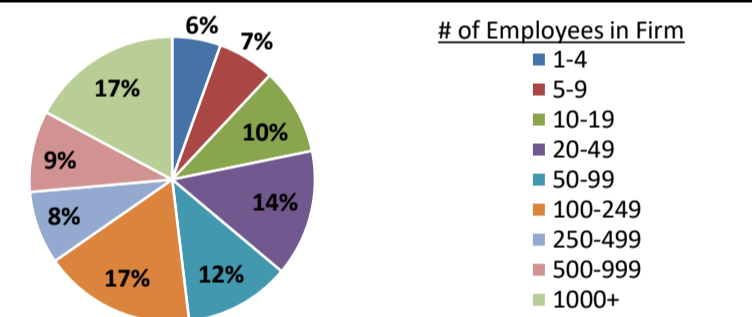
Historical Unemployment Rates



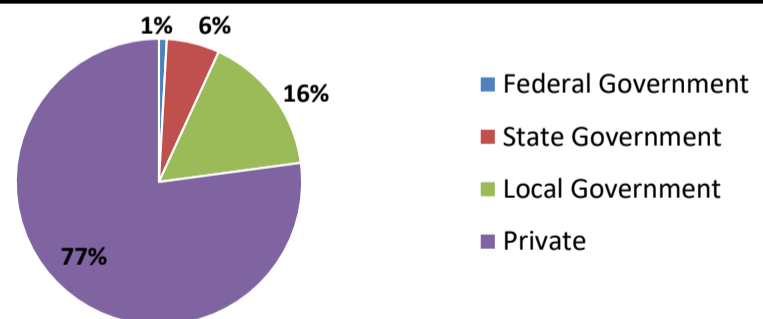
Projected Fastest Growing Industries in WDA (% growth 2014-2024)



Employment by Size Class (3rd Quarter 2017)



Employment by Ownership (3rd Quarter 2017)



Average Weekly Wage (3rd Quarter 2017)

	Q3 2017	Q2 2017	Q3 2016	Change	
				Quarter	Year
WDA	\$729	\$720	\$734	\$8	-\$5
Texas	\$1,032	\$1,027	\$1,042	\$5	-\$10
US	\$1,021	\$1,020	\$1,027	\$1	-\$6

Employment by Industry (3rd Quarter 2017, Percent Change)

Industry	Employment	% of total	% Change	
			Quarter	Year
Natural resources and mining	2,596	2.4%	-0.9%	-7.5%
Construction	5,482	5.1%	-0.5%	-1.7%
Manufacturing	11,875	11.1%	0.3%	-3.6%
Trade, transportation and utilities	21,183	19.9%	-0.4%	-0.8%
Information	826	0.8%	-1.7%	-3.4%
Financial activities	4,297	4.0%	1.3%	3.4%
Professional and business services	7,165	6.7%	-0.9%	-2.7%
Education and health services	33,531	31.4%	-2.8%	-1.1%
Leisure and hospitality	10,922	10.2%	0.4%	3.8%
Other services	2,360	2.2%	-1.9%	-0.4%
Public administration	6,420	6.0%	-1.3%	-1.5%
Total	106,657	100.0%	-1.1%	-1.0%

Employment by Industry (3rd Quarter 2017)

