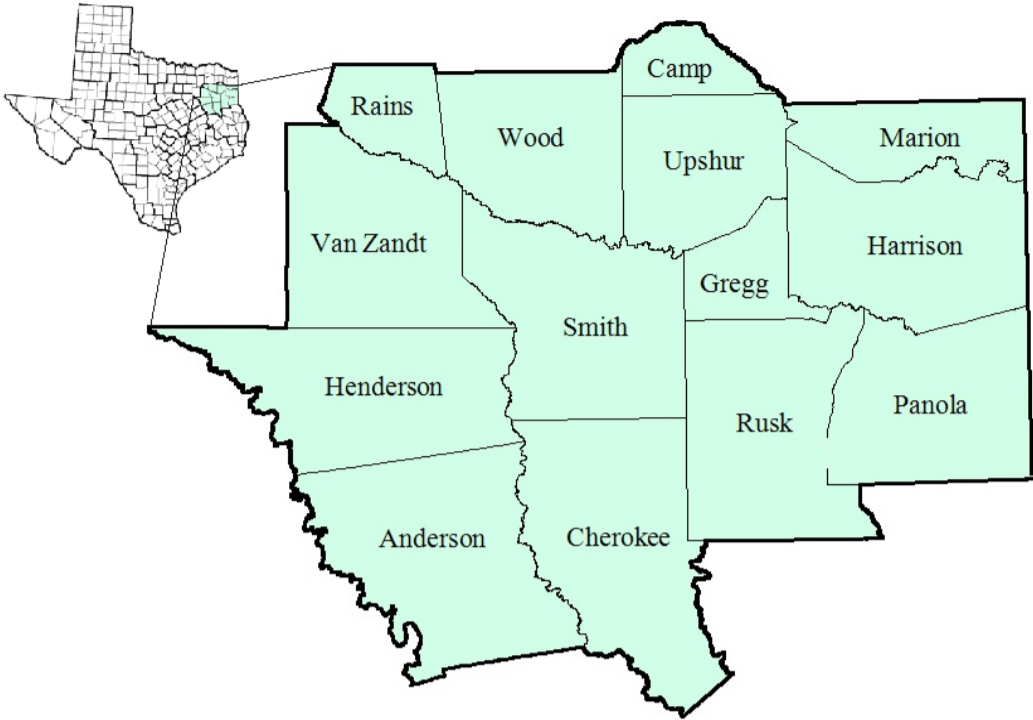


East Texas Workforce Development Area

January 2018



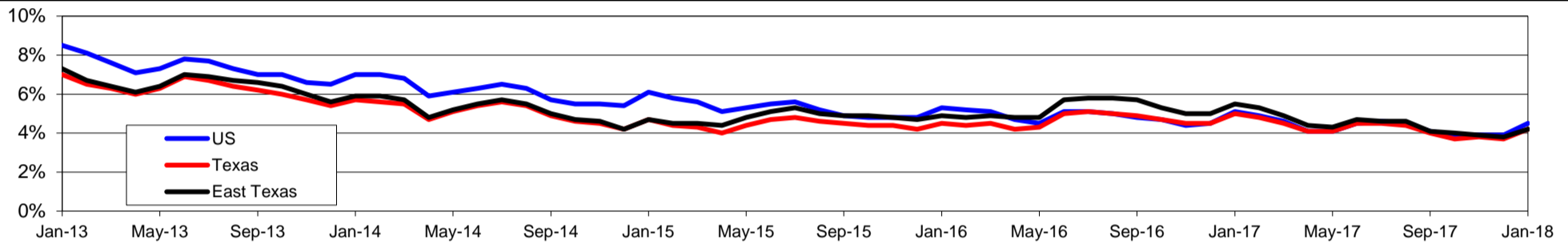
WDA Labor Force Statistics				
	Jan-18	Dec-17	Jan-17	OTY
CLF	380,806	379,492	378,040	2,766
Employed	364,833	365,208	357,084	7,749
Unemployed	15,973	14,284	20,956	-4,983
Rate	4.2%	3.8%	5.5%	-1.3%

Texas Labor Force Statistics				
	Jan-18	Dec-17	Jan-17	OTY
CLF	13,622,067	13,598,061	13,417,349	204,718
Employed	13,054,089	13,096,216	12,748,985	305,104
Unemployed	567,978	501,845	668,364	-100,386
Rate	4.2%	3.7%	5.0%	-0.8%

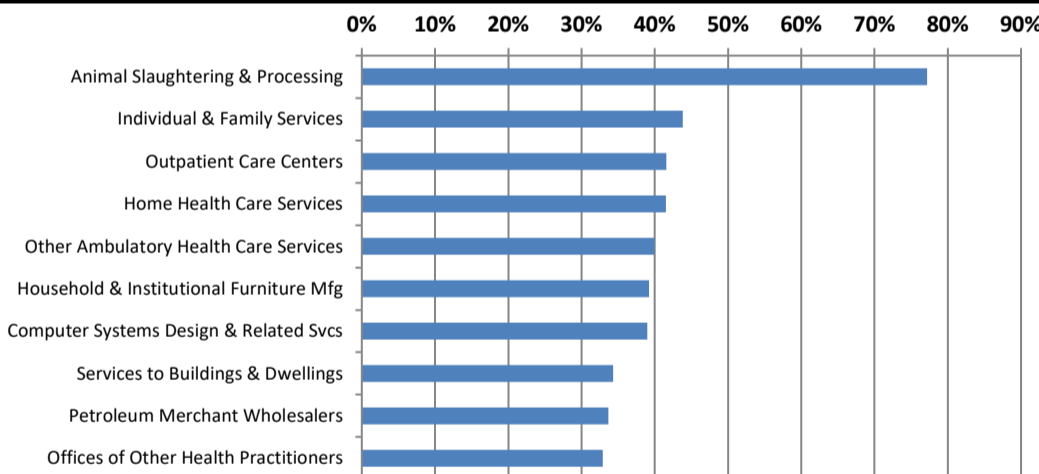
US Labor Force Statistics				
	Jan-18	Dec-17	Jan-17	OTY
CLF	160,037,000	159,880,000	158,676,000	1,361,000
Employed	152,848,000	153,602,000	150,527,000	2,321,000
Unemployed	7,189,000	6,278,000	8,149,000	-960,000
Rate	4.5%	3.9%	5.1%	-0.6%

Continued Claims for the Week of the 12th				
	Jan-18	Dec-17	Jan-17	OTY
WDA	2,621	2,687	3,789	-1,168
Texas	111,828	108,432	132,086	-20,258

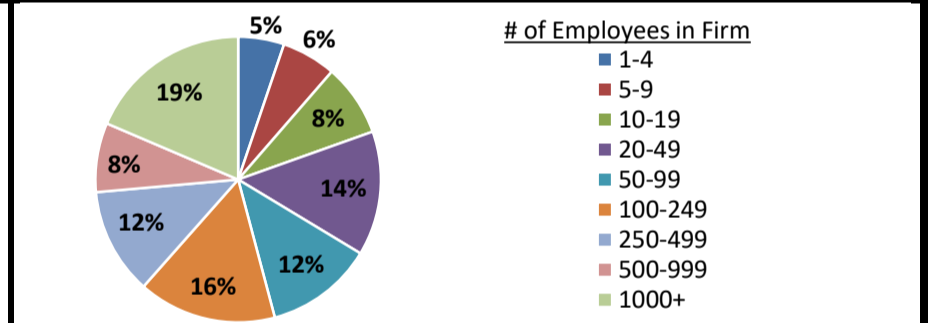
Historical Unemployment Rates



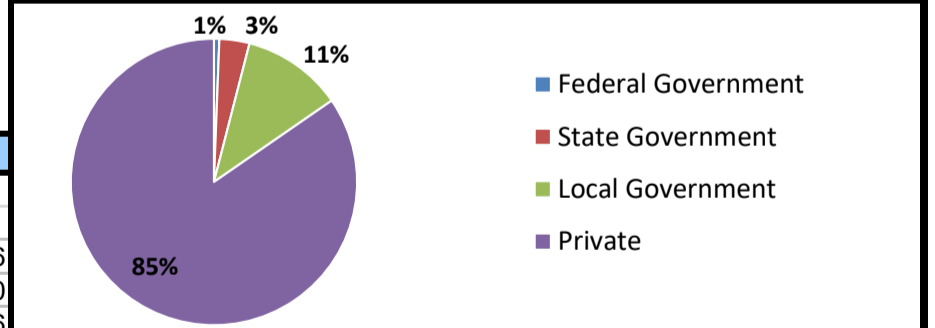
Projected Fastest Growing Industries in WDA (% growth 2014-2024)



Employment by Size Class (3rd Quarter 2017)



Employment by Ownership (3rd Quarter 2017)



Average Weekly Wage (3rd Quarter 2017)

	Q3 2017	Q2 2017	Q3 2016	Change	
				Quarter	Year
WDA	\$809	\$799	\$815	\$10	-\$6
Texas	\$1,032	\$1,027	\$1,042	\$5	-\$10
US	\$1,021	\$1,020	\$1,027	\$1	-\$6

Employment by Industry (3rd Quarter 2017, Percent Change)

Industry	Employment	% of total	% Change	
			Quarter	Year
Natural resources and mining	12,974	4.2%	3.0%	8.9%
Construction	21,595	7.1%	0.0%	-3.8%
Manufacturing	29,918	9.8%	1.3%	-2.0%
Trade, transportation and utilities	64,804	21.2%	-0.2%	-0.3%
Information	3,388	1.1%	0.0%	-23.0%
Financial activities	13,497	4.4%	6.2%	4.6%
Professional and business services	24,935	8.1%	1.2%	4.1%
Education and health services	82,349	26.9%	-2.8%	-0.3%
Leisure and hospitality	31,499	10.3%	-1.0%	0.6%
Other services	8,174	2.7%	1.4%	-6.5%
Public administration	13,153	4.3%	-1.1%	-1.1%
Total	306,286	100.0%	-0.3%	-0.3%

Employment by Industry (3rd Quarter 2017)

