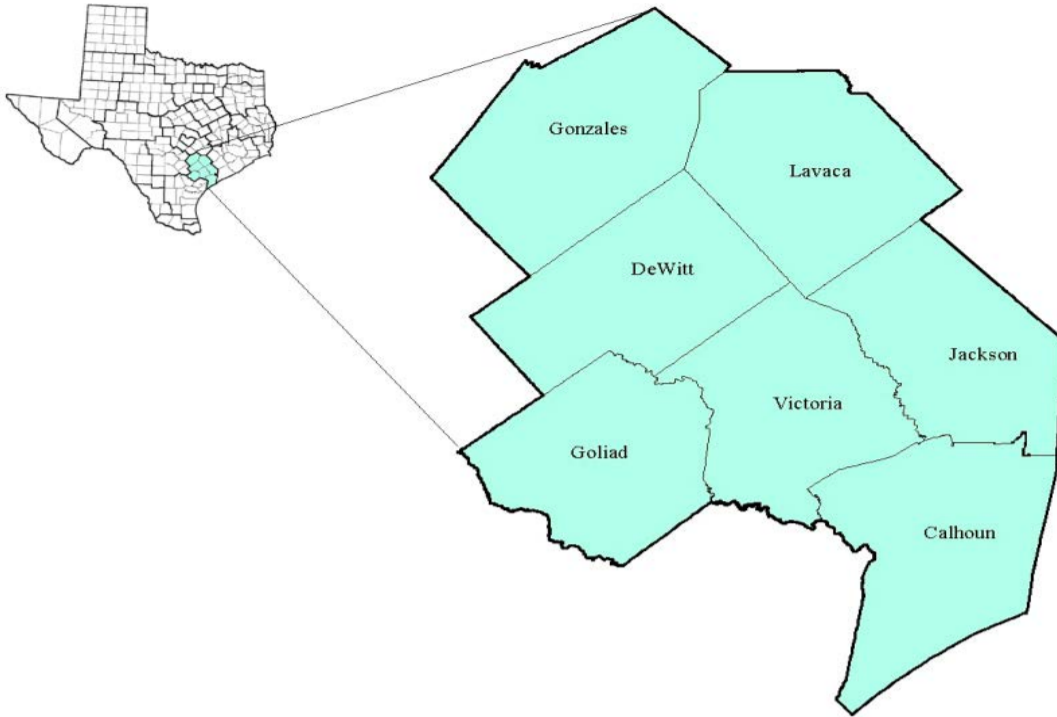


Golden Crescent Workforce Development Area

February 2018



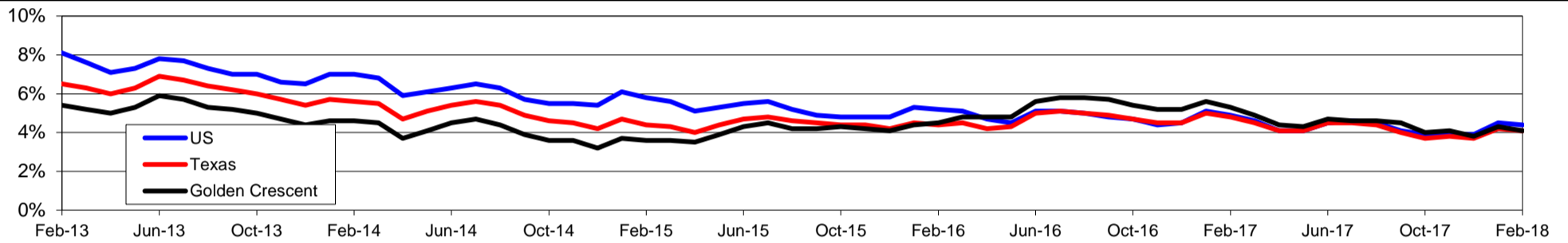
WDA Labor Force Statistics				
	Feb-18	Jan-18	Feb-17	OTY
CLF	91,145	89,867	92,053	-908
Employed	87,398	86,016	87,153	245
Unemployed	3,747	3,851	4,900	-1,153
Rate	4.1%	4.3%	5.3%	-1.2%

Texas Labor Force Statistics				
	Feb-18	Jan-18	Feb-17	OTY
CLF	13,811,924	13,621,781	13,493,966	317,958
Employed	13,241,913	13,053,790	12,840,842	401,071
Unemployed	570,011	567,991	653,124	-83,113
Rate	4.1%	4.2%	4.8%	-0.7%

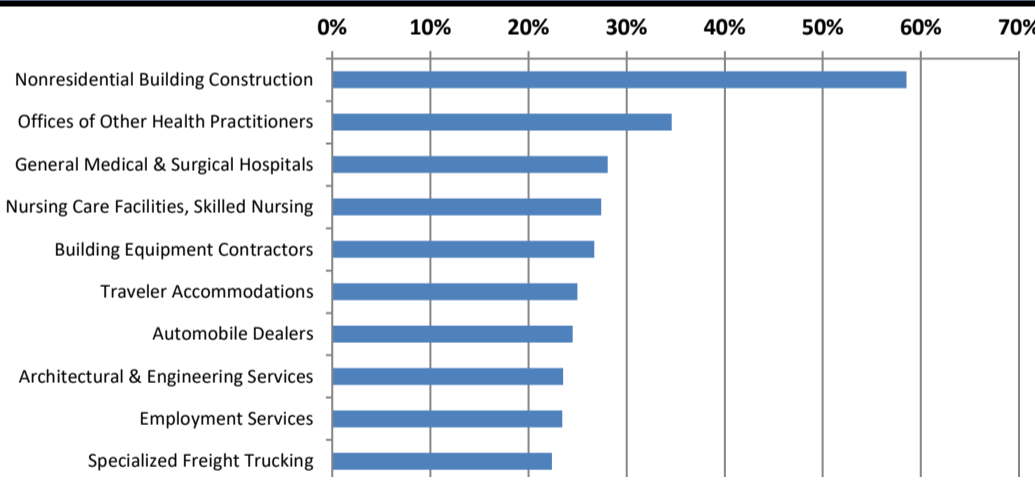
US Labor Force Statistics				
	Feb-18	Jan-18	Feb-17	OTY
CLF	161,494,000	160,037,000	159,482,000	2,012,000
Employed	154,403,000	152,848,000	151,594,000	2,809,000
Unemployed	7,091,000	7,189,000	7,887,000	-796,000
Rate	4.4%	4.5%	4.9%	-0.5%

Continued Claims for the Week of the 12th				
	Feb-18	Jan-18	Feb-17	OTY
WDA	502	643	821	-319
Texas	103,388	112,088	124,093	-20,705

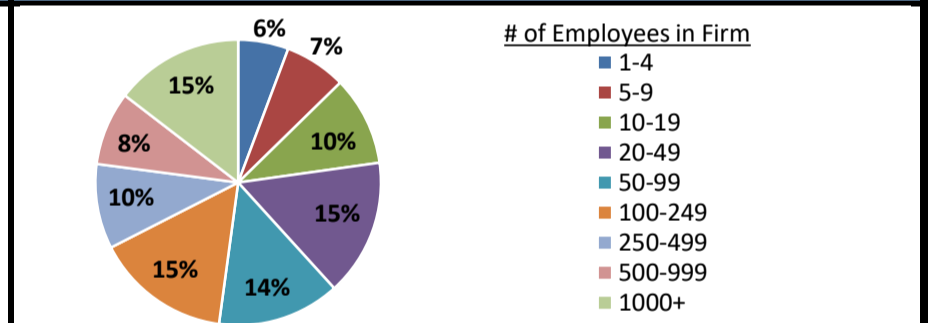
Historical Unemployment Rates



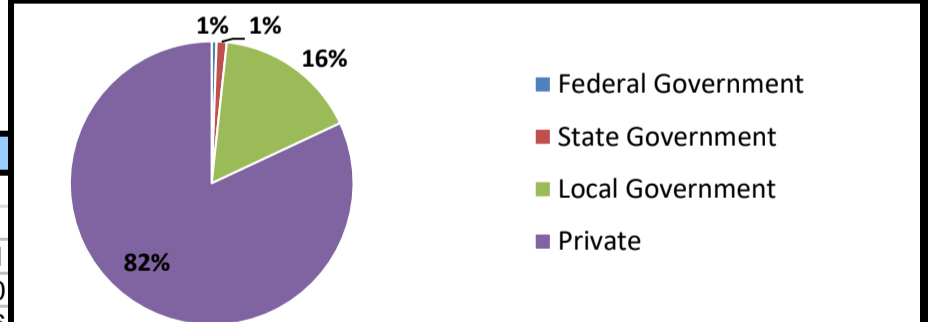
Projected Fastest Growing Industries in WDA (% growth 2014-2024)



Employment by Size Class (3rd Quarter 2017)



Employment by Ownership (3rd Quarter 2017)



Average Weekly Wage (3rd Quarter 2017)

	Q3 2017	Q2 2017	Q3 2016	Change	
				Quarter	Year
WDA	\$875	\$868	\$874	\$6	\$1
Texas	\$1,032	\$1,027	\$1,042	\$5	-\$10
US	\$1,021	\$1,020	\$1,027	\$1	-\$6

Employment by Industry (3rd Quarter 2017, Percent Change)

Industry	Employment	% of total	% Change	
			Quarter	Year
Natural resources and mining	5,176	6.8%	3.6%	16.1%
Construction	6,533	8.6%	-1.6%	-6.0%
Manufacturing	9,421	12.4%	0.2%	-3.1%
Trade, transportation and utilities	16,216	21.3%	0.1%	-1.3%
Information	674	0.9%	-2.6%	-6.4%
Financial activities	3,292	4.3%	-0.4%	4.5%
Professional and business services	4,536	6.0%	-1.0%	4.3%
Education and health services	17,818	23.4%	-5.0%	-5.4%
Leisure and hospitality	7,317	9.6%	-1.0%	-0.7%
Other services	1,988	2.6%	0.1%	3.4%
Public administration	3,134	4.1%	0.6%	-0.7%
Total	76,105	100.0%	-1.2%	-1.2%

Employment by Industry (3rd Quarter 2017)

