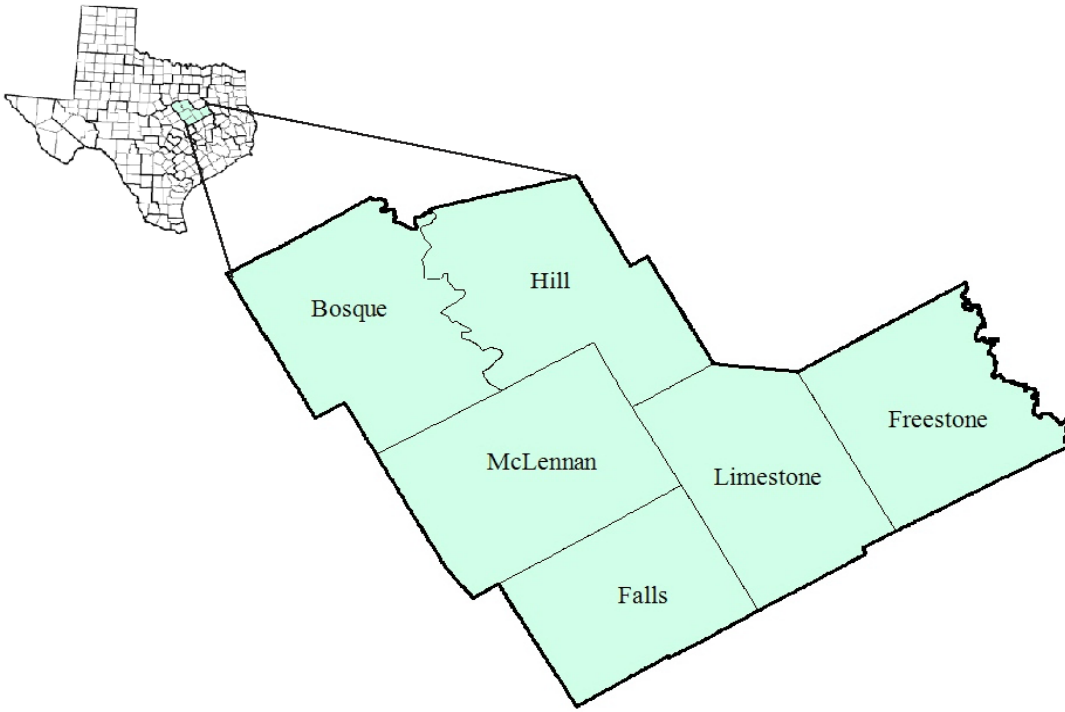


Heart of Texas Workforce Development Area

January 2018



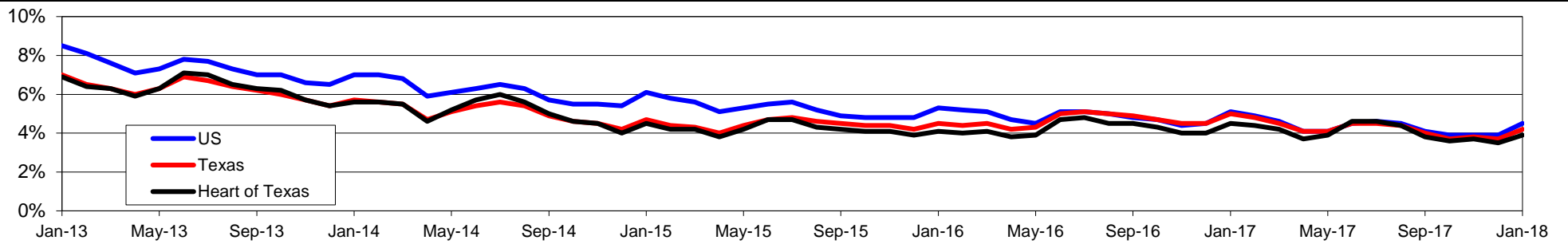
WDA Labor Force Statistics				
	Jan-18	Dec-17	Jan-17	OTY
CLF	163,461	163,197	163,226	235
Employed	157,027	157,555	155,961	1,066
Unemployed	6,434	5,642	7,265	-831
Rate	3.9%	3.5%	4.5%	-0.6%

Texas Labor Force Statistics				
	Jan-18	Dec-17	Jan-17	OTY
CLF	13,622,067	13,598,061	13,417,349	204,718
Employed	13,054,089	13,096,216	12,748,985	305,104
Unemployed	567,978	501,845	668,364	-100,386
Rate	4.2%	3.7%	5.0%	-0.8%

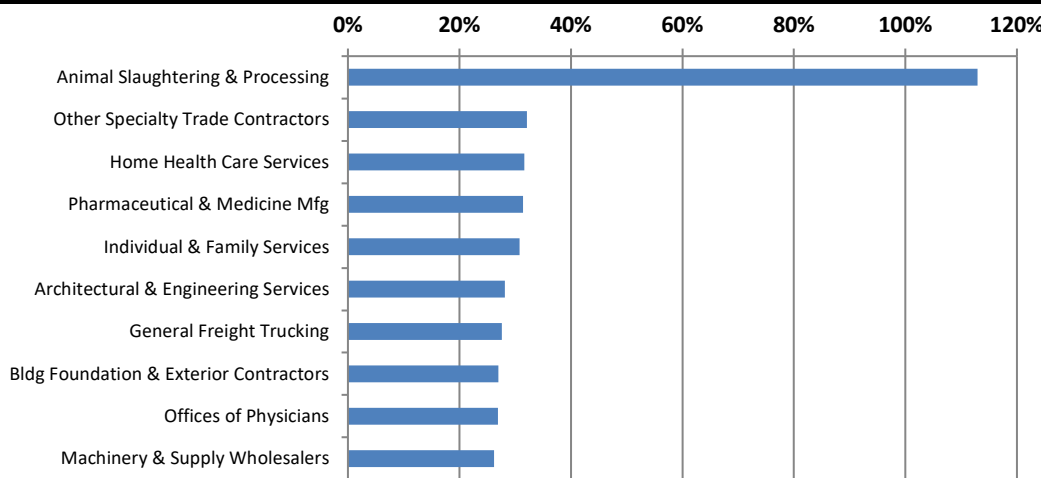
US Labor Force Statistics				
	Jan-18	Dec-17	Jan-17	OTY
CLF	160,037,000	159,880,000	158,676,000	1,361,000
Employed	152,848,000	153,602,000	150,527,000	2,321,000
Unemployed	7,189,000	6,278,000	8,149,000	-960,000
Rate	4.5%	3.9%	5.1%	-0.6%

Continued Claims for the Week of the 12th				
	Jan-18	Dec-17	Jan-17	OTY
WDA	994	913	1,167	-173
Texas	111,828	108,432	132,086	-20,258

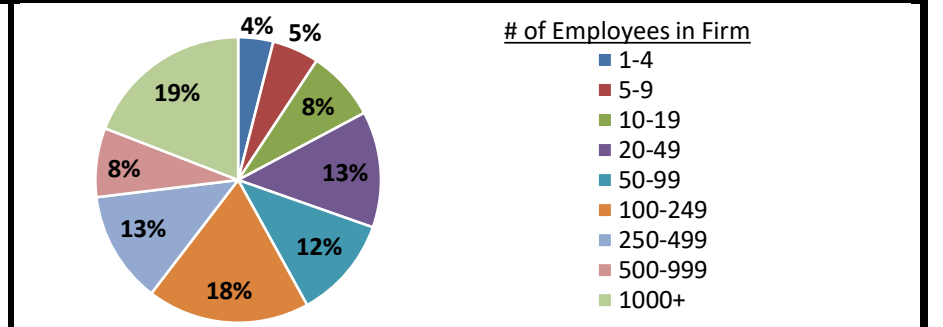
Historical Unemployment Rates



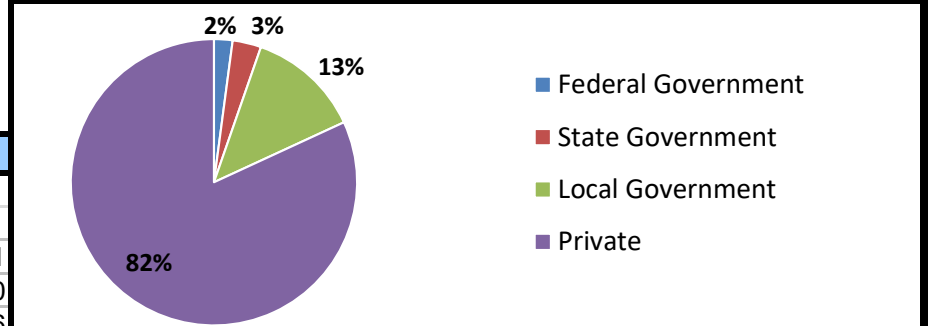
Projected Fastest Growing Industries in WDA (% growth 2014-2024)



Employment by Size Class (3rd Quarter 2017)



Employment by Ownership (3rd Quarter 2017)



Average Weekly Wage (3rd Quarter 2017)

	Q3 2017	Q2 2017	Q3 2016	Change	
				Quarter	Year
WDA	\$813	\$811	\$824	\$2	-\$11
Texas	\$1,032	\$1,027	\$1,042	\$5	-\$10
US	\$1,021	\$1,020	\$1,027	\$1	-\$6

Employment by Industry (3rd Quarter 2017, Percent Change)

Industry	Employment	% of total	% Change	
			Quarter	Year
Natural resources and mining	1,956	1.4%	3.0%	1.0%
Construction	8,991	6.3%	1.2%	-3.6%
Manufacturing	18,738	13.1%	0.8%	2.4%
Trade, transportation and utilities	26,736	18.8%	0.3%	0.1%
Information	1,226	0.9%	-0.5%	-3.9%
Financial activities	7,979	5.6%	0.9%	6.6%
Professional and business services	12,446	8.7%	-2.2%	-4.0%
Education and health services	39,348	27.6%	1.2%	4.1%
Leisure and hospitality	15,120	10.6%	1.2%	6.7%
Other services	3,362	2.4%	0.0%	-0.1%
Public administration	6,636	4.7%	-0.7%	-0.6%
Total	142,538	100.0%	0.5%	1.8%

Employment by Industry (3rd Quarter 2017)

