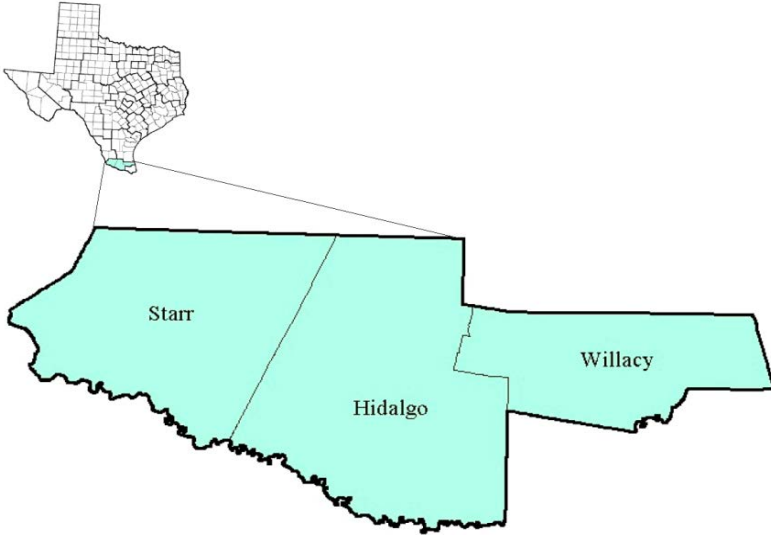


Lower Rio Grande Valley Workforce Development Area

August 2017



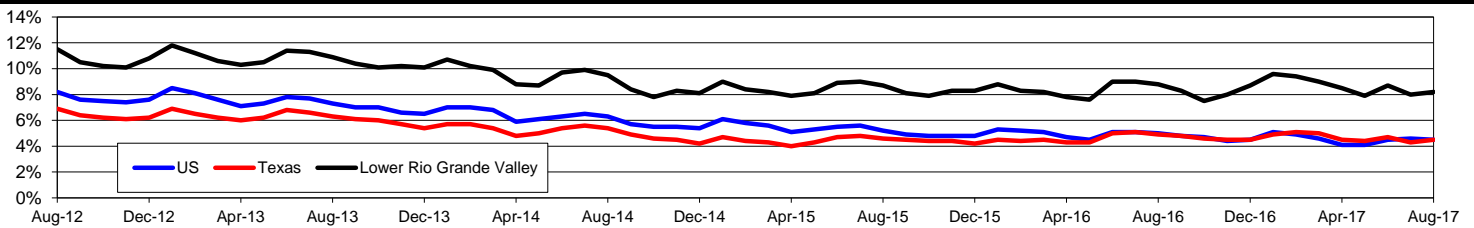
WDA Labor Force Statistics				
	Aug-17	Jul-17	Aug-16	OTY
CLF	366,581	365,650	366,188	393
Employed	336,364	336,550	334,059	2,305
Unemployed	30,217	29,100	32,129	-1,912
Rate	8.2%	8.0%	8.8%	-0.6%

Texas Labor Force Statistics				
	Aug-17	Jul-17	Aug-16	OTY
CLF	13,406,779	13,434,624	13,295,171	111,608
Employed	12,802,022	12,850,647	12,638,955	163,067
Unemployed	604,757	583,977	656,216	-51,459
Rate	4.5%	4.3%	4.9%	-0.4%

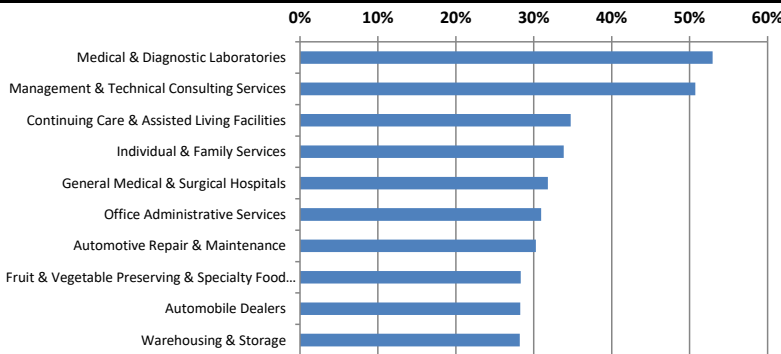
US Labor Force Statistics				
	Aug-17	Jul-17	Aug-16	OTY
CLF	160,863,000	161,911,000	159,800,000	1,063,000
Employed	153,576,000	154,470,000	151,804,000	1,772,000
Unemployed	7,287,000	7,441,000	7,996,000	-709,000
Rate	4.5%	4.6%	5.0%	-0.5%

Continued Claims for the Week of the 12th				
	Aug-17	Jul-17	Aug-16	OTY
WDA	7,159	8,053	7,926	-767
Texas	115,986	124,432	148,897	-32,911

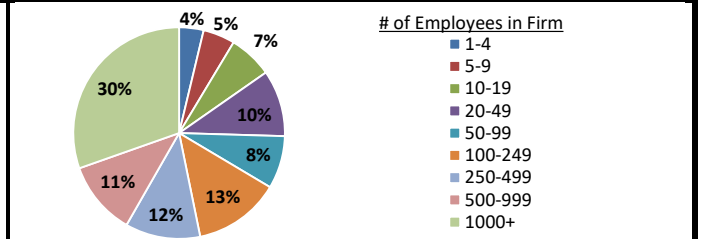
Historical Unemployment Rates



Projected Fastest Growing Industries in WDA (% growth 2014-2024)



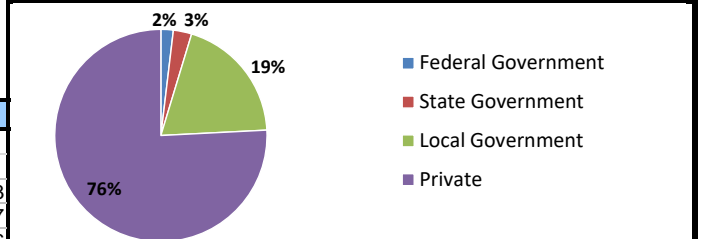
Employment by Size Class (4th Quarter 2016)



Average Weekly Wage (4th Quarter 2016)

	Q4 2016	Q3 2016	Q4 2015	Change	
				Quarter	Year
WDA	\$644	\$650	\$657	-\$6	-\$13
Texas	\$1,072	\$1,042	\$1,099	\$31	-\$27
US	\$1,067	\$1,027	\$1,083	\$40	-\$16

Employment by Ownership (4th Quarter 2016)



Employment by Industry (4th Quarter 2016, Percent Change)

Industry	Employment	% of total	% Change	
			Quarter	Year
Natural resources and mining	4,843	1.8%	12.1%	-9.0%
Construction	7,911	2.9%	1.4%	0.2%
Manufacturing	6,575	2.4%	7.3%	-2.4%
Trade, transportation and utilities	59,530	21.8%	2.3%	0.9%
Information	2,670	1.0%	-2.1%	1.2%
Financial activities	9,142	3.4%	-0.6%	-4.0%
Professional and business services	17,210	6.3%	3.4%	4.4%
Education and health services	119,737	43.9%	4.9%	2.1%
Leisure and hospitality	25,976	9.5%	-1.7%	3.7%
Other services	4,065	1.5%	-1.4%	-1.3%
Public administration	15,221	5.6%	2.1%	6.4%
Total	272,880	100.0%	3.1%	1.7%

Employment by Industry (4th Quarter 2016)

