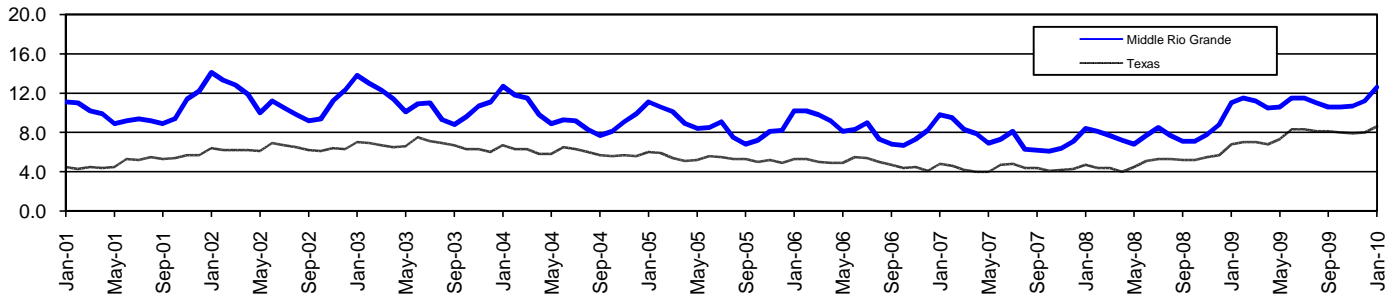


Middle Rio Grande Workforce Development Area*

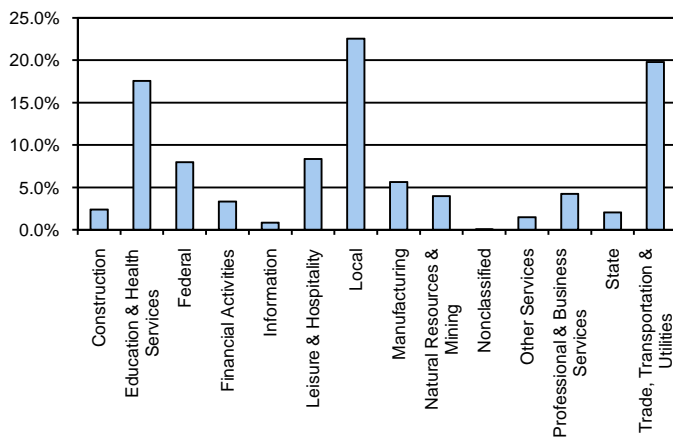
January 2010

Middle Rio Grande WDA					Texas				
	CLF	Employed	Unemployed	Rate		CLF	Employed	Unemployed	Rate
Jan-10	73,119	63,913	9,206	12.6	Jan-10	12,094,136	11,049,755	1,044,381	8.6
Dec-09	72,152	64,048	8,104	11.2	Dec-09	12,027,653	11,069,879	957,774	8.0
Jan-09	69,082	61,473	7,609	11.0	Jan-09	11,738,166	10,937,524	800,642	6.8

Historical Unemployment Rates



Middle Rio Grande WDA Industry Composition 3rd Quarter 2009



Total WDA Claims

	Jan-10	Dec-09	Jan-09	OTY
Initial	1,117	762	1,106	11
Continued	5,267	4,807	4,743	524
Continued Claims for the Week of the 12th				
Continued	53,513	55,143	39,323	14,190

Texas Unemployment Insurance Claims Filed

	Jan-10	Dec-09	Jan-09	OTY
Initial	108,752	100,826	125,284	-16,532
Continued	1,201,595	1,147,179	843,726	357,869
Continued Claims for the Week of the 12th				
Continued	254,414	266,245	202,492	51,922

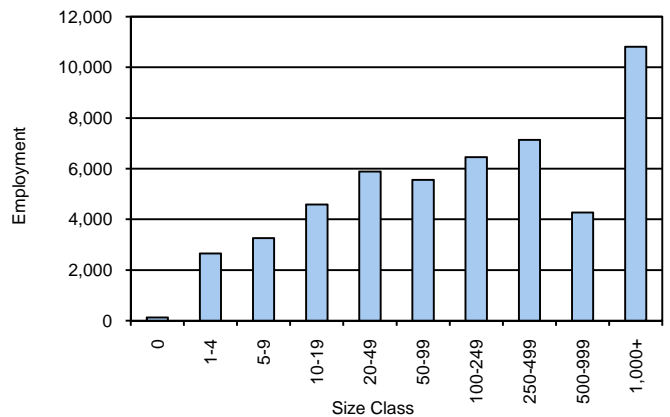
Middle Rio Grande WDA Average Weekly Wage

	Middle Rio Grande	WDA Qtr. Chg.	Texas
3rd Quarter 2009	\$563.27	\$26.15	\$844.59
2nd Quarter 2009	\$537.12	WDA OTY Chg.	\$838.34
3rd Quarter 2008	\$543.21	\$20.06	\$849.50

NAICS Covered Employment Quarterly Data 3rd Quarter 2009

SUPER SECTOR	Employment	Change	
		Quarter	Year
Construction	1,196	-20	-121
Education & Health Services	8,913	146	210
Federal	4,030	115	395
Financial Activities	1,684	-9	-17
Information	413	9	-46
Leisure & Hospitality	4,236	-49	-234
Local	11,434	-810	343
Manufacturing	2,855	-60	-152
Natural Resources & Mining	2,006	-499	-223
Nonclassified	11	-2	-4
Other Services	746	-20	-75
Professional & Business Services	2,147	16	278
State	1,028	-10	-32
Trade, Transportation & Utilities	10,032	-96	-947
TOTAL	50,731	-1,289	-625

Size Class Employment Composition 3rd Quarter 2009



*Counties in WDA: Dimmit, Edwards, Kinney, LaSalle, Maverick, Real, Uvalde, Val Verde, & Zavala