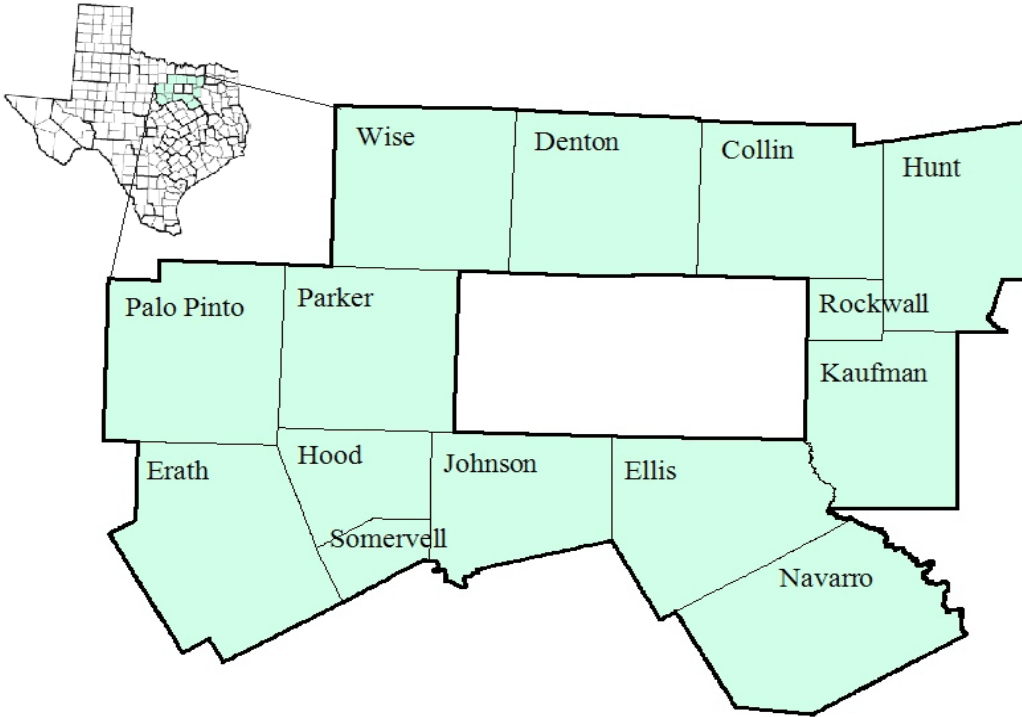


# North Central Texas Workforce Development Area

## January 2018



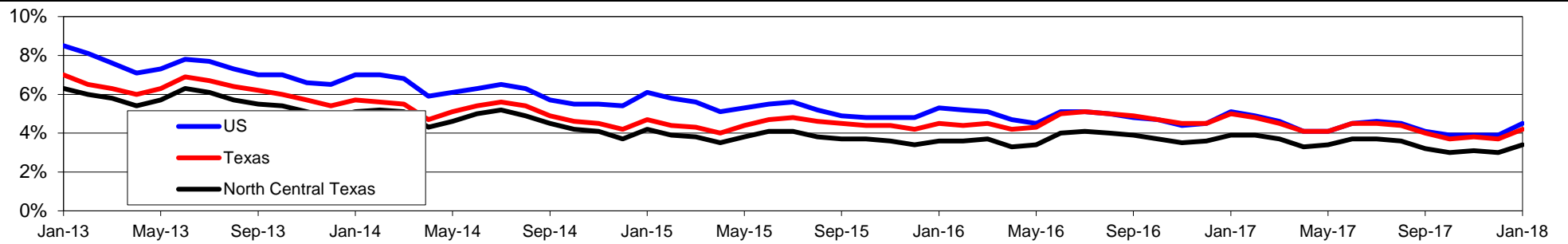
WDA Labor Force Statistics				
	Jan-18	Dec-17	Jan-17	OTY
CLF	1,495,607	1,496,811	1,464,161	31,446
Employed	1,444,807	1,452,215	1,407,090	37,717
Unemployed	50,800	44,596	57,071	-6,271
Rate	3.4%	3.0%	3.9%	-0.5%

Texas Labor Force Statistics				
	Jan-18	Dec-17	Jan-17	OTY
CLF	13,622,067	13,598,061	13,417,349	204,718
Employed	13,054,089	13,096,216	12,748,985	305,104
Unemployed	567,978	501,845	668,364	-100,386
Rate	4.2%	3.7%	5.0%	-0.8%

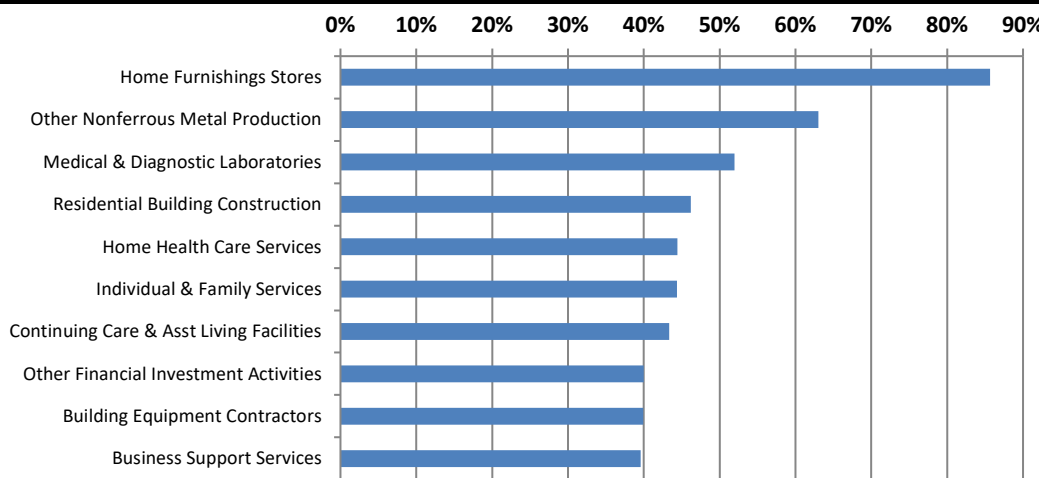
US Labor Force Statistics				
	Jan-18	Dec-17	Jan-17	OTY
CLF	160,037,000	159,880,000	158,676,000	1,361,000
Employed	152,848,000	153,602,000	150,527,000	2,321,000
Unemployed	7,189,000	6,278,000	8,149,000	-960,000
Rate	4.5%	3.9%	5.1%	-0.6%

Continued Claims for the Week of the 12th				
	Jan-18	Dec-17	Jan-17	OTY
WDA	9,762	9,297	10,303	-541
Texas	111,828	108,432	132,086	-20,258

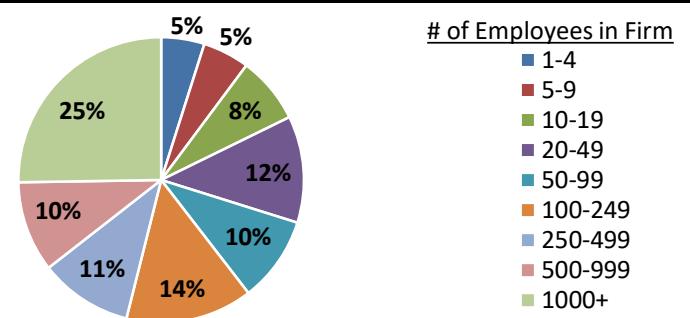
### Historical Unemployment Rates



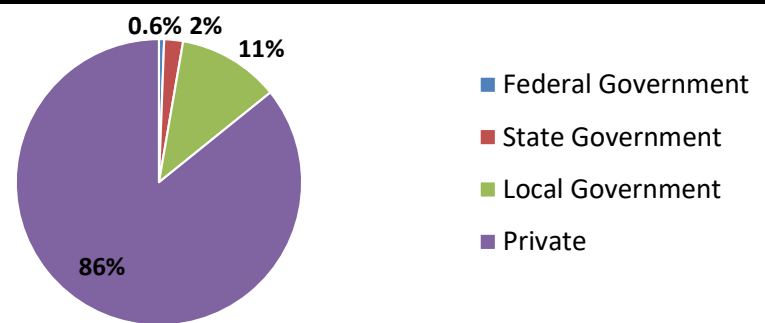
### Projected Fastest Growing Industries in WDA (% growth 2014-2024)



### Employment by Size Class (3rd Quarter 2017)



### Employment by Ownership (3rd Quarter 2017)



### Average Weekly Wage (3rd Quarter 2017)

	Q3 2017	Q2 2017	Q3 2016	Change	
				Quarter	Year
WDA	\$1,004	\$991	\$1,008	\$13	-\$4
Texas	\$1,032	\$1,027	\$1,042	\$5	-\$10
US	\$1,021	\$1,020	\$1,027	\$1	-\$6

### Employment by Industry (3rd Quarter 2017, Percent Change)

Industry	Employment	% of total	% Change	
			Quarter	Year
Natural resources and mining	12,110	1.3%	4.5%	17.8%
Construction	54,627	5.8%	3.6%	8.6%
Manufacturing	81,974	8.8%	0.7%	1.7%
Trade, transportation and utilities	195,551	20.9%	1.2%	3.8%
Information	21,970	2.4%	-1.1%	3.5%
Financial activities	64,976	7.0%	3.5%	5.1%
Professional and business services	122,609	13.1%	1.5%	3.2%
Education and health services	214,454	23.0%	-4.1%	3.6%
Leisure and hospitality	115,693	12.4%	0.4%	4.1%
Other services	25,547	2.7%	1.3%	2.6%
Public administration	24,407	2.6%	0.6%	3.3%
<b>Total</b>	<b>933,918</b>	<b>100.0%</b>	<b>0.1%</b>	<b>4.0%</b>

### Employment by Industry (3rd Quarter 2017)

