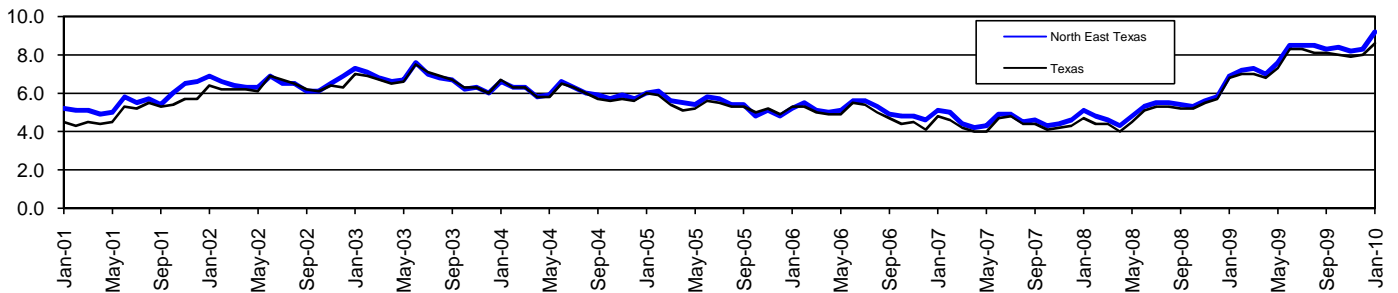


# North East Texas Workforce Development Area\*

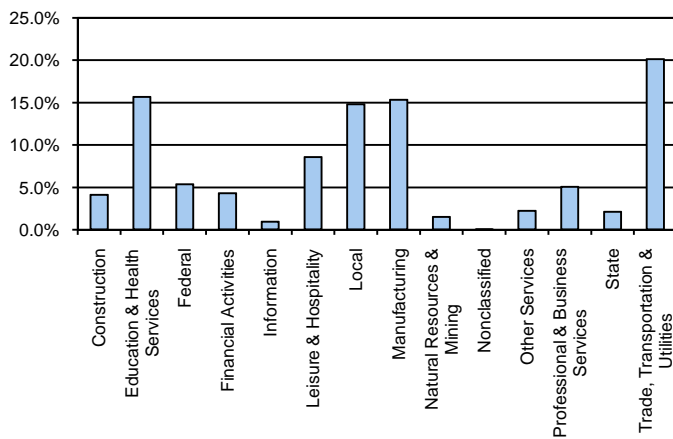
January 2010

North East Texas WDA					Texas				
	CLF	Employed	Unemployed	Rate		CLF	Employed	Unemployed	Rate
Jan-10	134,871	122,515	12,356	9.2	Jan-10	12,094,136	11,049,755	1,044,381	8.6
Dec-09	133,939	122,830	11,109	8.3	Dec-09	12,027,653	11,069,879	957,774	8.0
Jan-09	130,106	121,151	8,955	6.9	Jan-09	11,738,166	10,937,524	800,642	6.8

### Historical Unemployment Rates



### North East Texas WDA Industry Composition 3rd Quarter 2009



### Total WDA Claims

	Jan-10	Dec-09	Jan-09	OTY
Initial	1,300	1,173	1,269	31
Continued	6,517	6,348	4,908	1,609
Continued Claims for the Week of the 12th				
Continued	2,279	2,120	1,651	628

### Texas Unemployment Insurance Claims Filed

	Jan-10	Dec-09	Jan-09	OTY
Initial	108,752	100,826	125,284	-16,532
Continued	1,201,595	1,147,179	843,726	357,869
Continued Claims for the Week of the 12th				
Continued	254,414	266,245	202,492	51,922

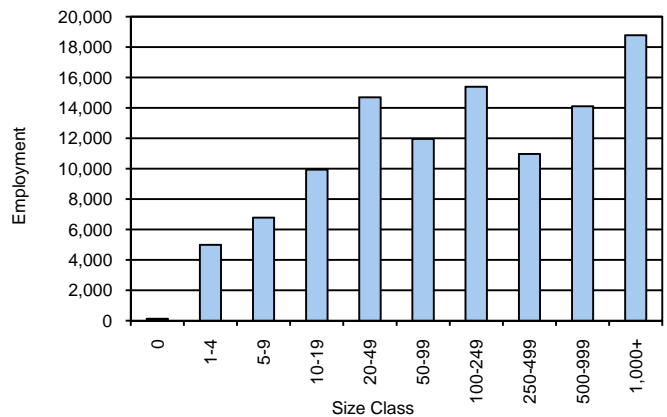
### North East Texas WDA Average Weekly Wage

	North East Tx	WDA Qtr. Chg.	Texas
3rd Quarter 2009	\$645.01	\$16.52	\$844.59
2nd Quarter 2009	\$628.49	WDA OTY Chg.	\$838.34
3rd Quarter 2008	\$637.39	\$7.62	\$849.50

### NAICS Covered Employment Quarterly Data 3rd Quarter 2009

SUPER SECTOR	Employment	Change	
		Quarter	Year
Construction	4,411	318	-591
Education & Health Services	16,865	307	935
Federal	5,745	-1	-131
Financial Activities	4,611	-1	7
Information	1,005	-33	-52
Leisure & Hospitality	9,220	-157	330
Local	15,936	-864	132
Manufacturing	16,524	-530	-3,224
Natural Resources & Mining	1,627	-57	-163
Nonclassified	19	-13	-5
Other Services	2,390	-26	-167
Professional & Business Services	5,454	-340	-614
State	2,252	-69	26
Trade, Transportation & Utilities	21,705	-531	-1,553
<b>TOTAL</b>	<b>107,764</b>	<b>-1,997</b>	<b>-5,070</b>

### Size Class Employment Composition 3rd Quarter 2009



\*Counties in WDA: Bowie, Cass, Delta, Franklin, Hopkins, Lamar, Morris, Red River, & Titus