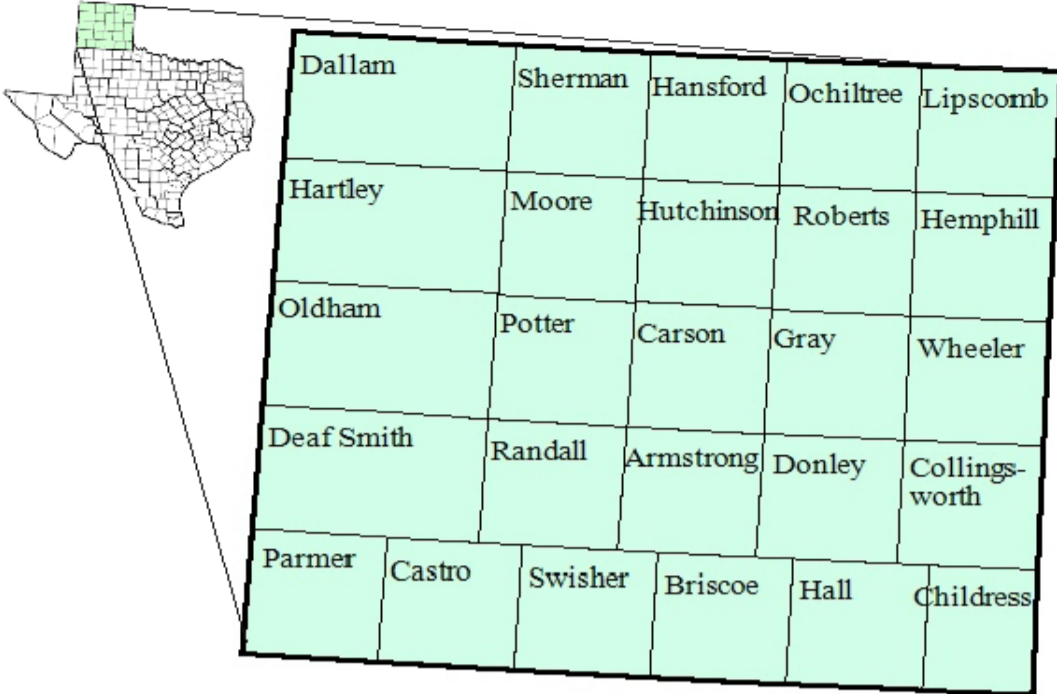


Panhandle Workforce Development Area

January 2018



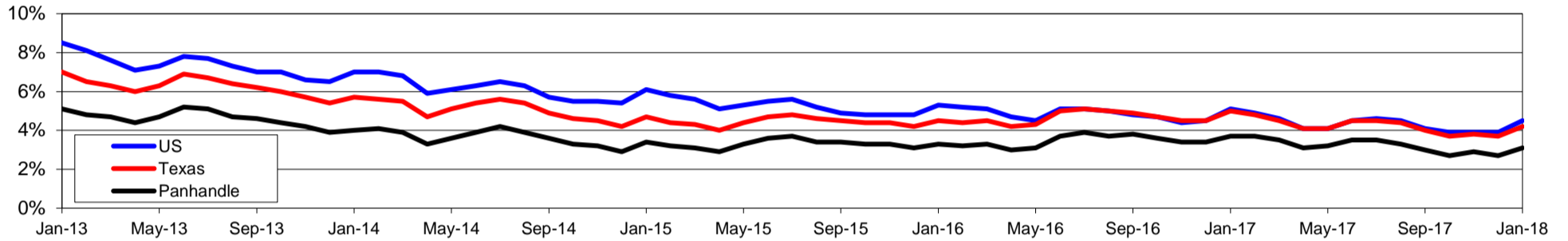
WDA Labor Force Statistics				
	Jan-18	Dec-17	Jan-17	OTY
CLF	206,833	207,427	207,322	-489
Employed	200,468	201,793	199,558	910
Unemployed	6,365	5,634	7,764	-1,399
Rate	3.1%	2.7%	3.7%	-0.6%

Texas Labor Force Statistics				
	Jan-18	Dec-17	Jan-17	OTY
CLF	13,622,067	13,598,061	13,417,349	204,718
Employed	13,054,089	13,096,216	12,748,985	305,104
Unemployed	567,978	501,845	668,364	-100,386
Rate	4.2%	3.7%	5.0%	-0.8%

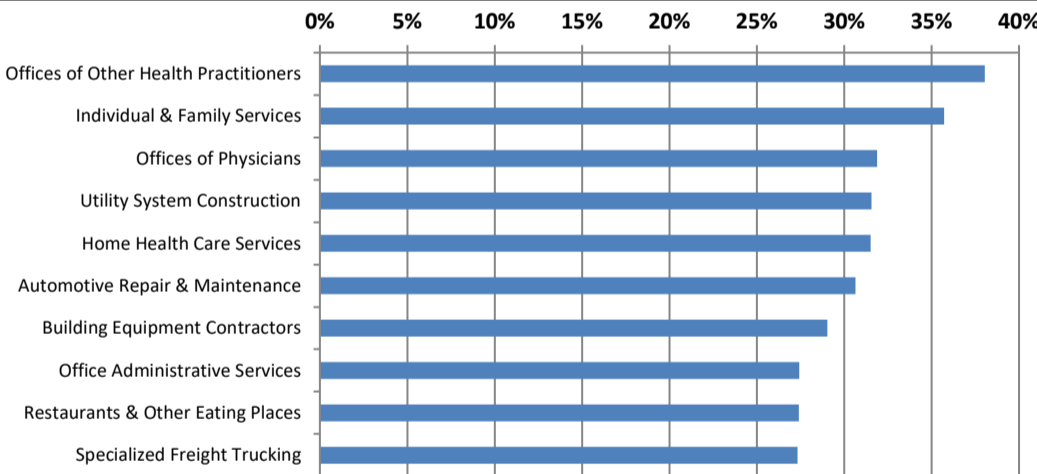
US Labor Force Statistics				
	Jan-18	Dec-17	Jan-17	OTY
CLF	160,037,000	159,880,000	158,676,000	1,361,000
Employed	152,848,000	153,602,000	150,527,000	2,321,000
Unemployed	7,189,000	6,278,000	8,149,000	-960,000
Rate	4.5%	3.9%	5.1%	-0.6%

Continued Claims for the Week of the 12th				
	Jan-18	Dec-17	Jan-17	OTY
WDA	808	761	1,173	-365
Texas	111,828	108,432	132,086	-20,258

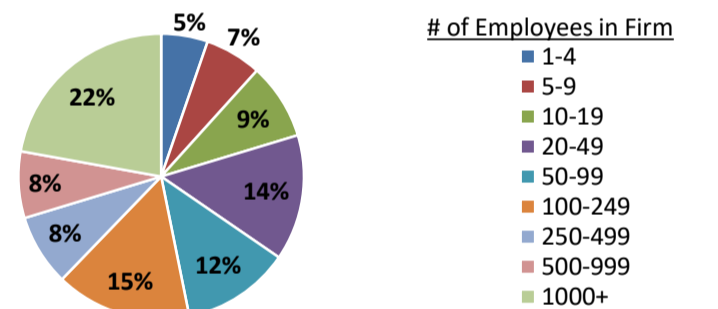
Historical Unemployment Rates



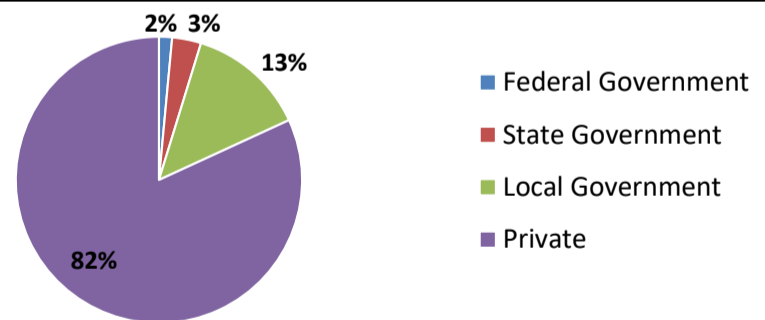
Projected Fastest Growing Industries in WDA (% growth 2014-2024)



Employment by Size Class (3rd Quarter 2017)



Employment by Ownership (3rd Quarter 2017)



Average Weekly Wage (3rd Quarter 2017)

	Q3 2017	Q2 2017	Q3 2016	Change	
				Quarter	Year
WDA	\$836	\$837	\$851	-\$2	-\$16
Texas	\$1,032	\$1,027	\$1,042	\$5	-\$10
US	\$1,021	\$1,020	\$1,027	\$1	-\$6

Employment by Industry (3rd Quarter 2017, Percent Change)

Industry	Employment	% of total	% Change	
			Quarter	Year
Natural resources and mining	15,363	8.3%	2.6%	3.2%
Construction	11,322	6.1%	-0.9%	-4.6%
Manufacturing	24,516	13.3%	0.5%	3.8%
Trade, transportation and utilities	37,257	20.2%	0.1%	-4.2%
Information	1,753	1.0%	-3.6%	-4.5%
Financial activities	8,548	4.6%	0.2%	-1.5%
Professional and business services	11,722	6.4%	0.3%	-0.8%
Education and health services	40,725	22.1%	-5.1%	-0.1%
Leisure and hospitality	18,476	10.0%	-0.6%	-0.4%
Other services	5,539	3.0%	-1.1%	-0.5%
Public administration	9,117	4.9%	-0.7%	-1.2%
Total	184,338	100.0%	-1.1%	-0.7%

Employment by Industry (3rd Quarter 2017)

