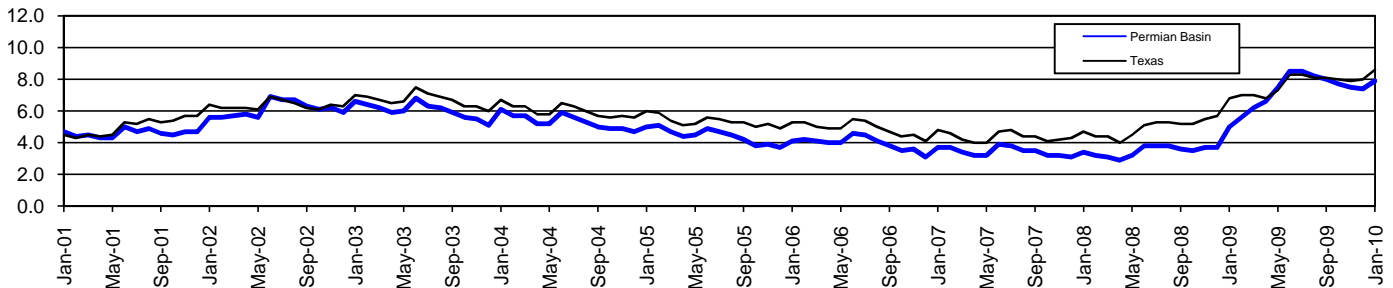


Permian Basin Workforce Development Area*

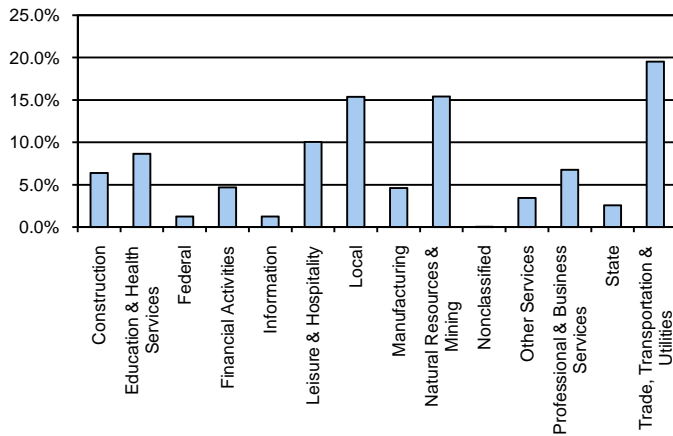
January 2010

Permian Basin WDA					Texas				
	CLF	Employed	Unemployed	Rate		CLF	Employed	Unemployed	Rate
Jan-10	207,278	190,980	16,298	7.9	Jan-10	12,094,136	11,049,755	1,044,381	8.6
Dec-09	206,698	191,492	15,206	7.4	Dec-09	12,027,653	11,069,879	957,774	8.0
Jan-09	208,446	198,059	10,387	5.0	Jan-09	11,738,166	10,937,524	800,642	6.8

Historical Unemployment Rates



Permian Basin WDA Industry Composition 3rd Quarter 2009



Total WDA Claims

	Jan-10	Dec-09	Jan-09	OTY
Initial	1,341	1,237	2,220	-879
Continued	7,216	7,778	4,281	2,935
Continued Claims for the Week of the 12th				
Continued	2,431	2,564	1,586	845

Texas Unemployment Insurance Claims Filed

	Jan-10	Dec-09	Jan-09	OTY
Initial	108,752	100,826	125,284	-16,532
Continued	1,201,595	1,147,179	843,726	357,869
Continued Claims for the Week of the 12th				
Continued	254,414	266,245	202,492	51,922

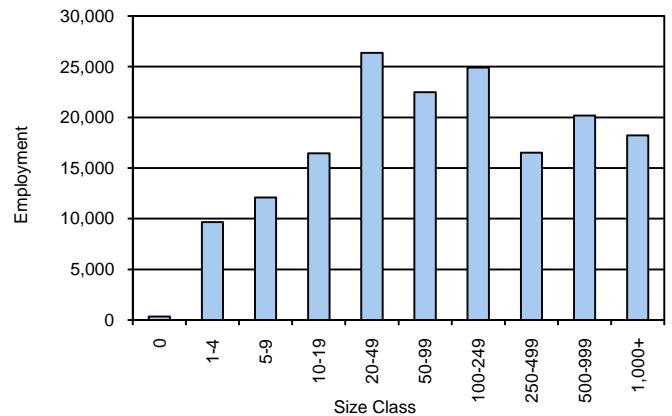
Permian Basin WDA Average Weekly Wage

	Permian Basin	WDA Qtr. Chg.	Texas
3rd Quarter 2009	\$788.90	\$1.83	\$844.59
2nd Quarter 2009	\$787.07	WDA OTY Chg.	\$838.34
3rd Quarter 2008	\$858.01	-\$69.11	\$849.50

NAICS Covered Employment Quarterly Data 3rd Quarter 2009

SUPER SECTOR	Employment	Change	
		Quarter	Year
Construction	10,661	-173	-1,898
Education & Health Services	14,463	203	71
Federal	2,080	-86	109
Financial Activities	7,853	-138	-426
Information	2,108	-49	-144
Leisure & Hospitality	16,812	-490	-187
Local	25,707	-1,087	1,461
Manufacturing	7,721	-242	-1,684
Natural Resources & Mining	25,752	-355	-4,258
Nonclassified	81	-9	-54
Other Services	5,717	-47	-422
Professional & Business Services	11,290	-341	-3,004
State	4,309	-23	158
Trade, Transportation & Utilities	32,670	-414	-2,536
TOTAL	167,224	-3,251	-12,814

Size Class Employment Composition 3rd Quarter 2009



*Counties in WDA: Andrews, Borden, Crane, Dawson, Ector, Gaines, Glasscock, Howard, Loving, Martin, Midland, Pecos, Reeves, Terrell, Upton, Ward, & Winkler