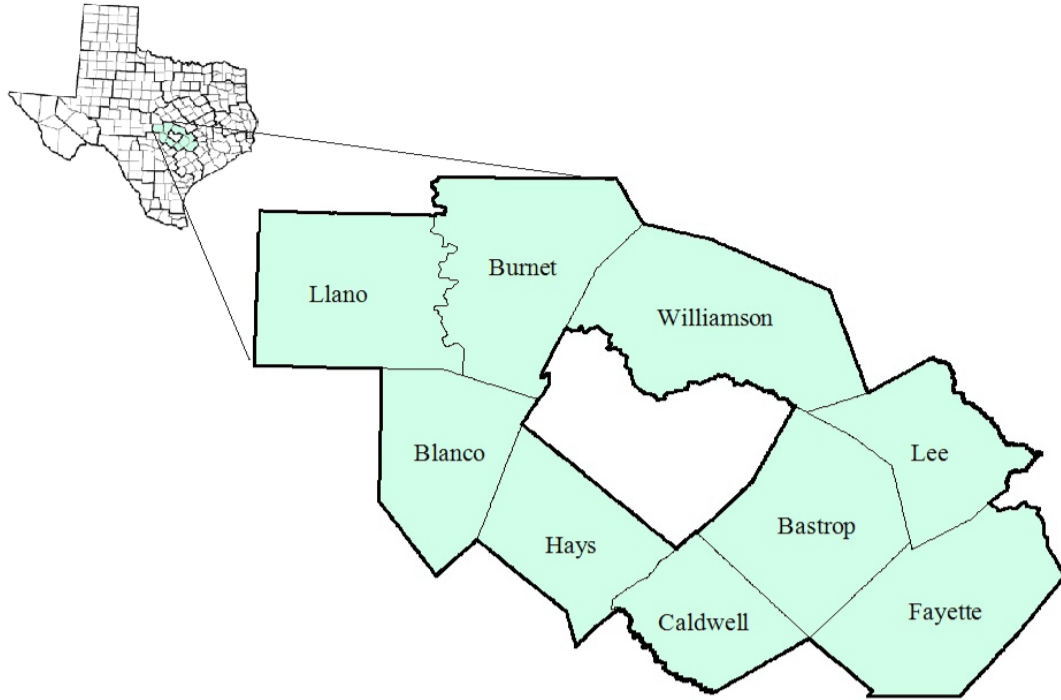


Rural Capital Workforce Development Area

January 2018



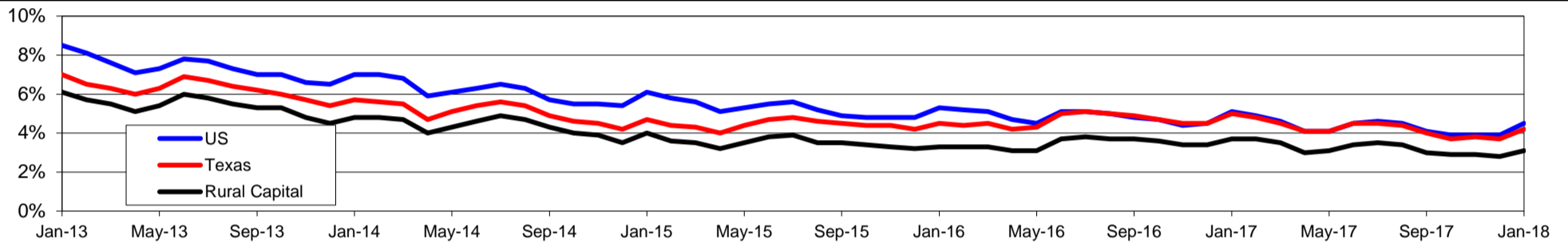
WDA Labor Force Statistics				
	Jan-18	Dec-17	Jan-17	OTY
CLF	519,950	516,821	504,358	15,592
Employed	503,626	502,297	485,641	17,985
Unemployed	16,324	14,524	18,717	-2,393
Rate	3.1%	2.8%	3.7%	-0.6%

Texas Labor Force Statistics				
	Jan-18	Dec-17	Jan-17	OTY
CLF	13,622,067	13,598,061	13,417,349	204,718
Employed	13,054,089	13,096,216	12,748,985	305,104
Unemployed	567,978	501,845	668,364	-100,386
Rate	4.2%	3.7%	5.0%	-0.8%

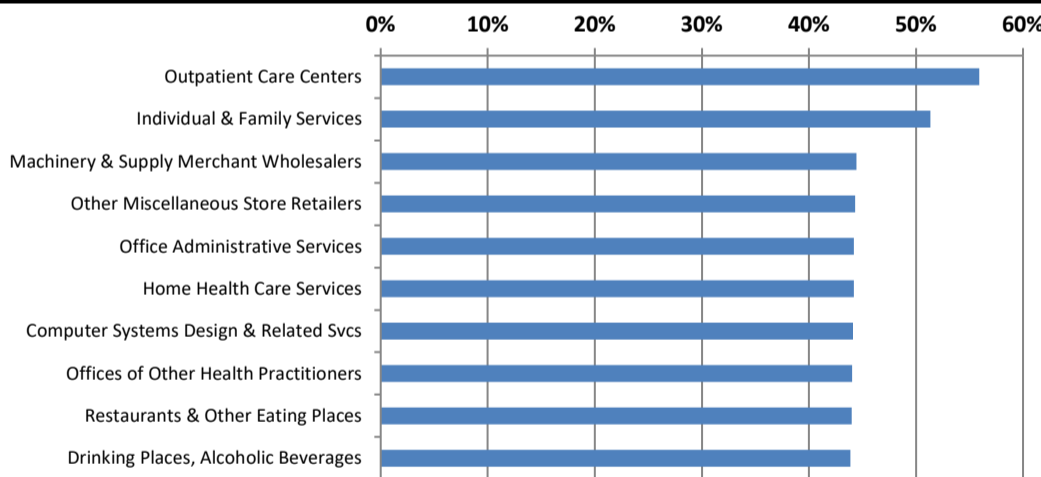
US Labor Force Statistics				
	Jan-18	Dec-17	Jan-17	OTY
CLF	160,037,000	159,880,000	158,676,000	1,361,000
Employed	152,848,000	153,602,000	150,527,000	2,321,000
Unemployed	7,189,000	6,278,000	8,149,000	-960,000
Rate	4.5%	3.9%	5.1%	-0.6%

Continued Claims for the Week of the 12th				
	Jan-18	Dec-17	Jan-17	OTY
WDA	2,713	2,640	3,135	-422
Texas	111,828	108,432	132,086	-20,258

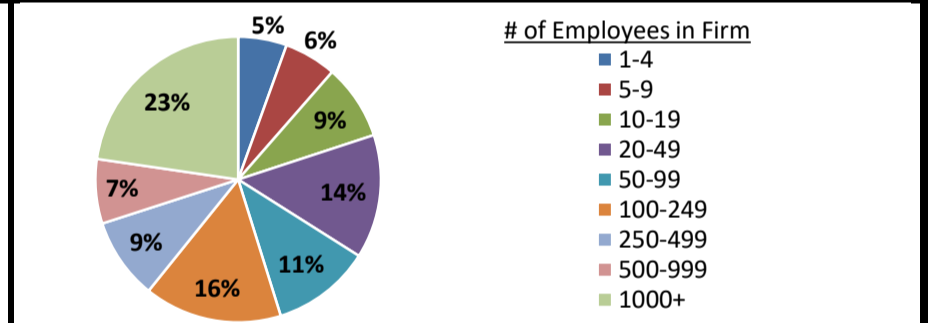
Historical Unemployment Rates



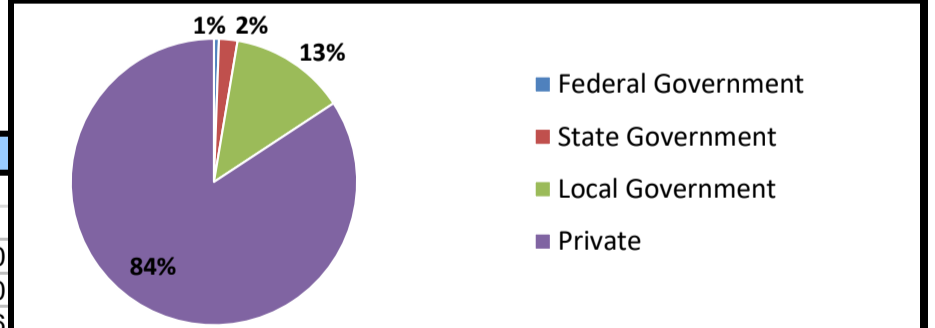
Projected Fastest Growing Industries in WDA (% growth 2014-2024)



Employment by Size Class (3rd Quarter 2017)



Employment by Ownership (3rd Quarter 2017)



Average Weekly Wage (3rd Quarter 2017)

	Q3 2017	Q2 2017	Q3 2016	Change	
				Quarter	Year
WDA	\$901	\$883	\$900	\$18	\$0
Texas	\$1,032	\$1,027	\$1,042	\$5	-\$10
US	\$1,021	\$1,020	\$1,027	\$1	-\$6

Employment by Industry (3rd Quarter 2017, Percent Change)

Industry	Employment	% of total	% Change	
			Quarter	Year
Natural resources and mining	4,214	1.4%	2.0%	12.2%
Construction	25,622	8.7%	4.7%	9.5%
Manufacturing	21,170	7.2%	1.7%	1.3%
Trade, transportation and utilities	72,138	24.4%	1.2%	3.9%
Information	3,160	1.1%	0.6%	-6.3%
Financial activities	13,263	4.5%	2.8%	3.8%
Professional and business services	28,378	9.6%	-0.2%	1.6%
Education and health services	66,965	22.7%	-5.7%	3.3%
Leisure and hospitality	40,991	13.9%	0.2%	4.6%
Other services	9,505	3.2%	0.6%	2.4%
Public administration	10,148	3.4%	1.2%	3.0%
Total	295,554	100.0%	-0.4%	3.8%

Employment by Industry (3rd Quarter 2017)

