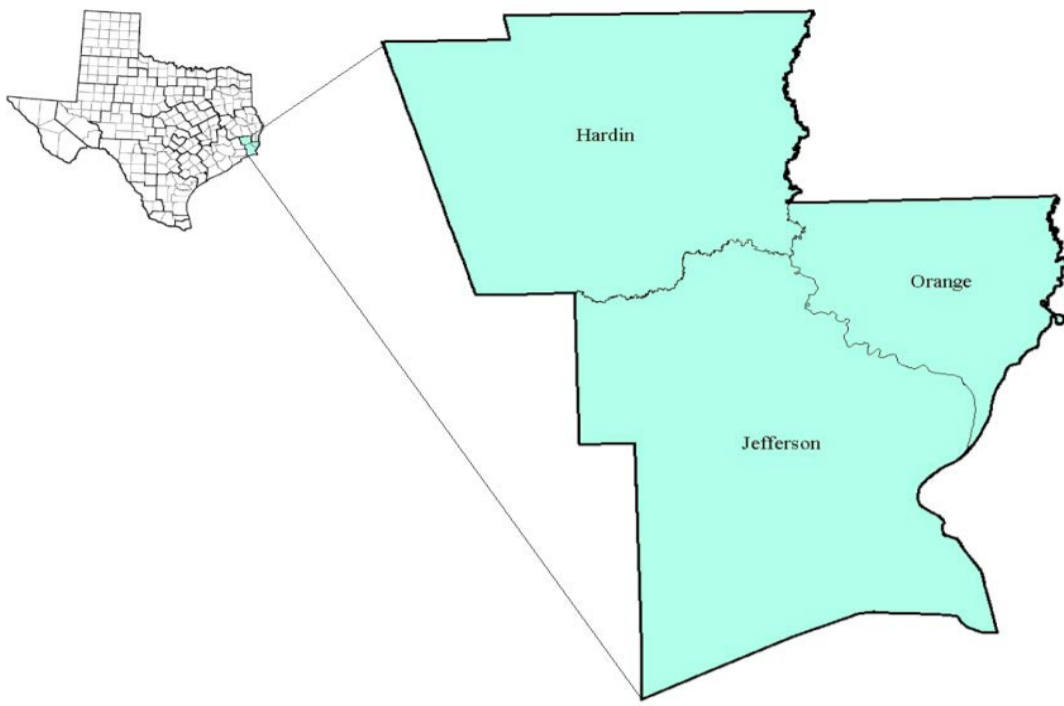


South East Texas Workforce Development Area

November 2017



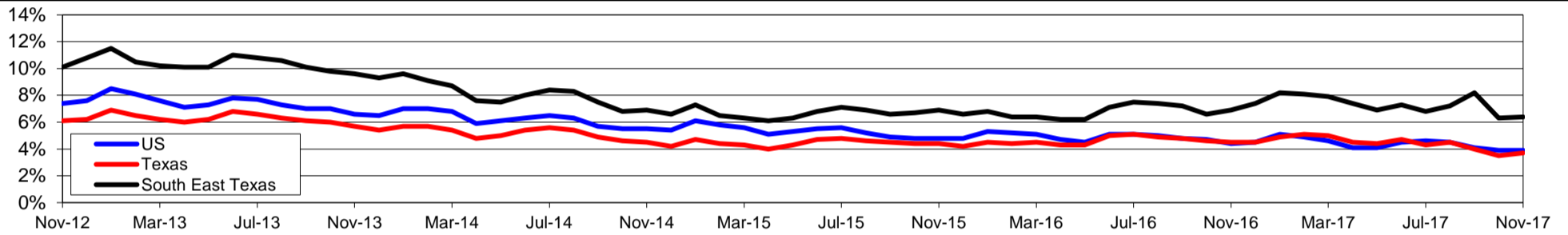
WDA Labor Force Statistics				
	Nov-17	Oct-17	Nov-16	OTY
CLF	167,229	166,276	168,537	-1,308
Employed	156,459	155,759	156,921	-462
Unemployed	10,770	10,517	11,616	-846
Rate	6.4%	6.3%	6.9%	-0.5%

Texas Labor Force Statistics				
	Nov-17	Oct-17	Nov-16	OTY
CLF	13,501,846	13,392,522	13,371,089	130,757
Employed	13,002,576	12,922,849	12,771,219	231,357
Unemployed	499,270	469,673	599,870	-100,600
Rate	3.7%	3.5%	4.5%	-0.8%

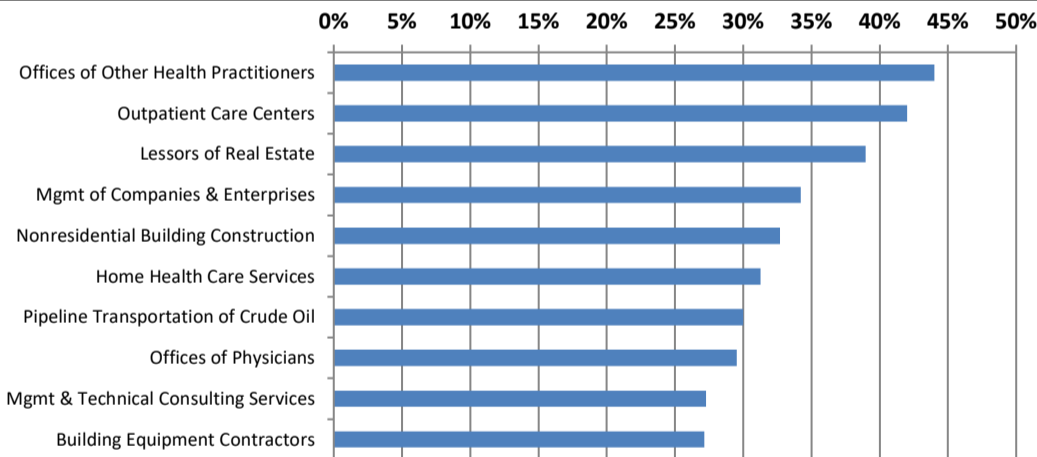
US Labor Force Statistics				
	Nov-17	Oct-17	Nov-16	OTY
CLF	160,466,000	160,465,000	159,451,000	1,015,000
Employed	154,180,000	154,223,000	152,385,000	1,795,000
Unemployed	6,286,000	6,242,000	7,066,000	-780,000
Rate	3.9%	3.9%	4.4%	-0.5%

Continued Claims for the Week of the 12th				
	Nov-17	Oct-17	Nov-16	OTY
WDA	3,396	3,602	3,141	255
Texas	104,499	105,966	126,982	-22,483

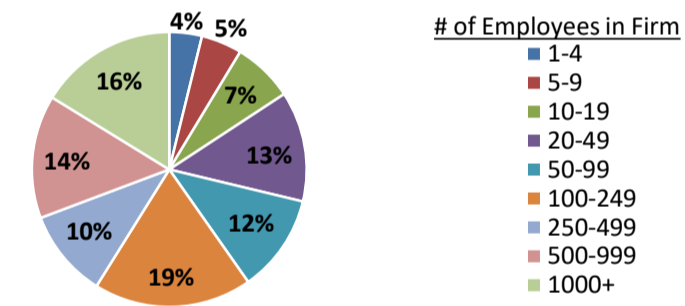
Historical Unemployment Rates



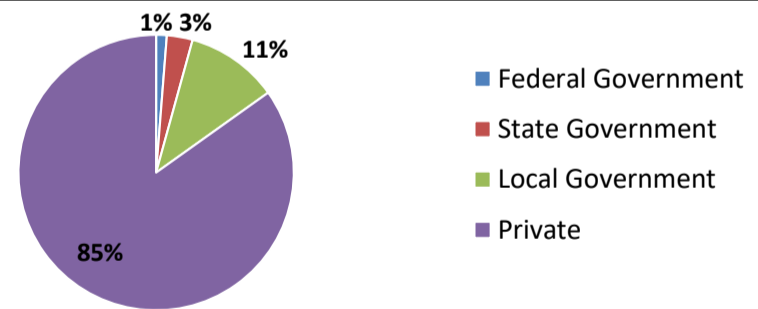
Projected Fastest Growing Industries in WDA (% growth 2014-2024)



Employment by Size Class (2nd Quarter 2017)



Employment by Ownership (2nd Quarter 2017)



Average Weekly Wage (2nd Quarter 2017)

	Q2 2017	Q1 2017	Q2 2016	Change	
				Quarter	Year
WDA	\$999	\$1,091	\$993	-\$92	\$6
Texas	\$1,026	\$1,124	\$1,000	-\$99	\$25
US	N/A	\$1,111	\$988	N/A	N/A

Employment by Industry (2nd Quarter 2017, Percent Change)

Industry	Employment	% of total	% Change	
			Quarter	Year
Natural resources and mining	1,112	0.7%	-0.4%	-13.4%
Construction	17,861	11.3%	2.5%	2.6%
Manufacturing	21,549	13.7%	0.4%	0.3%
Trade, transportation and utilities	31,925	20.2%	-1.2%	-1.7%
Information	1,262	0.8%	-1.3%	-5.9%
Financial activities	5,707	3.6%	0.0%	2.1%
Professional and business services	14,269	9.0%	-0.3%	-0.3%
Education and health services	35,221	22.3%	0.0%	-1.7%
Leisure and hospitality	16,458	10.4%	4.9%	2.4%
Other services	4,938	3.1%	-6.2%	-4.7%
Public administration	7,414	4.7%	0.5%	0.2%
Total	157,716	100.0%	0.4%	-0.4%

Employment by Industry (2nd Quarter 2017)

