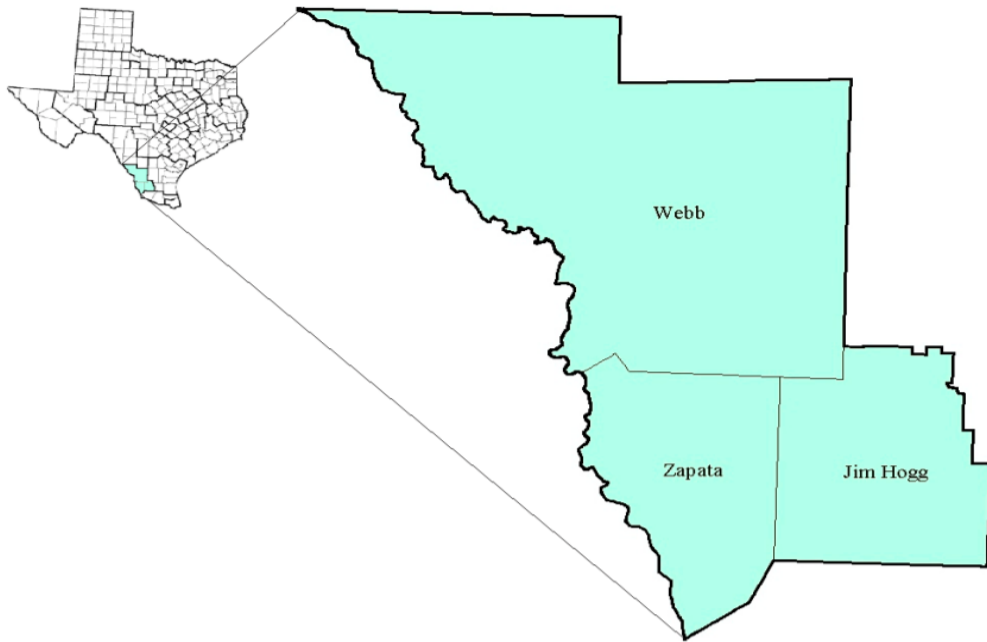


South Texas Workforce Development Area

November 2017



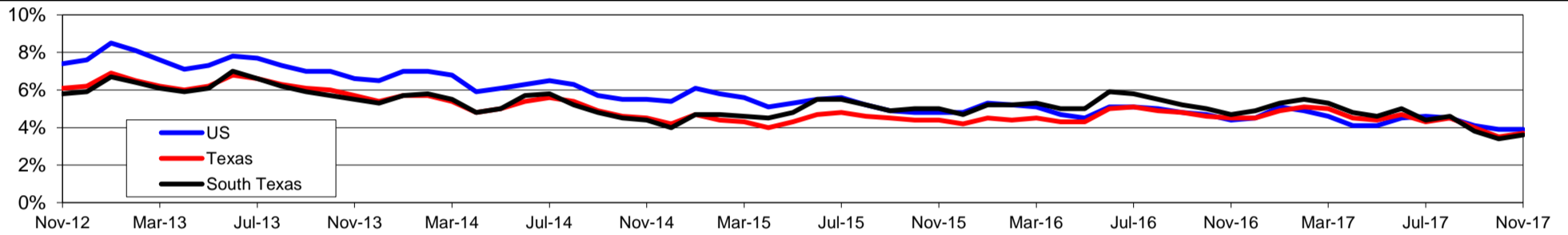
WDA Labor Force Statistics				
	Nov-17	Oct-17	Nov-16	OTY
CLF	121,053	119,991	121,361	-308
Employed	116,702	115,950	115,615	1,087
Unemployed	4,351	4,041	5,746	-1,395
Rate	3.6%	3.4%	4.7%	-1.1%

Texas Labor Force Statistics				
	Nov-17	Oct-17	Nov-16	OTY
CLF	13,501,846	13,392,522	13,371,089	130,757
Employed	13,002,576	12,922,849	12,771,219	231,357
Unemployed	499,270	469,673	599,870	-100,600
Rate	3.7%	3.5%	4.5%	-0.8%

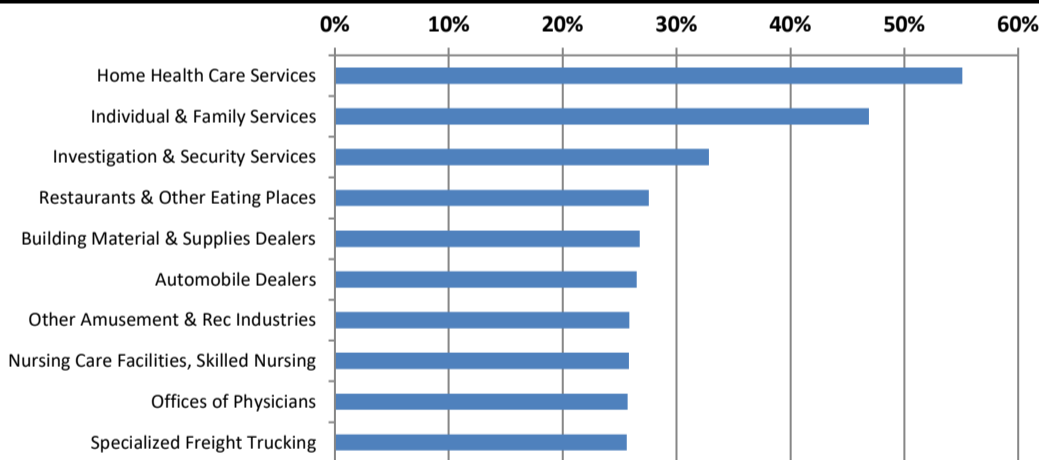
US Labor Force Statistics				
	Nov-17	Oct-17	Nov-16	OTY
CLF	160,466,000	160,465,000	159,451,000	1,015,000
Employed	154,180,000	154,223,000	152,385,000	1,795,000
Unemployed	6,286,000	6,242,000	7,066,000	-780,000
Rate	3.9%	3.9%	4.4%	-0.5%

Continued Claims for the Week of the 12th				
	Nov-17	Oct-17	Nov-16	OTY
WDA	662	628	983	-321
Texas	104,499	105,966	126,982	-22,483

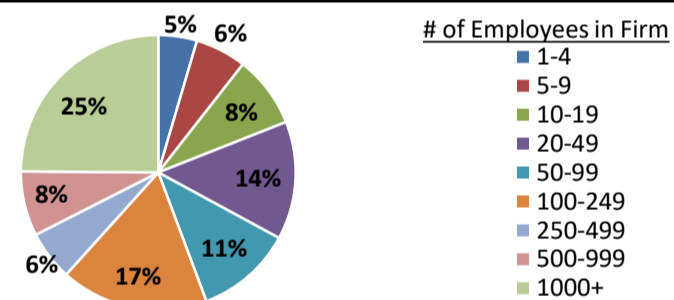
Historical Unemployment Rates



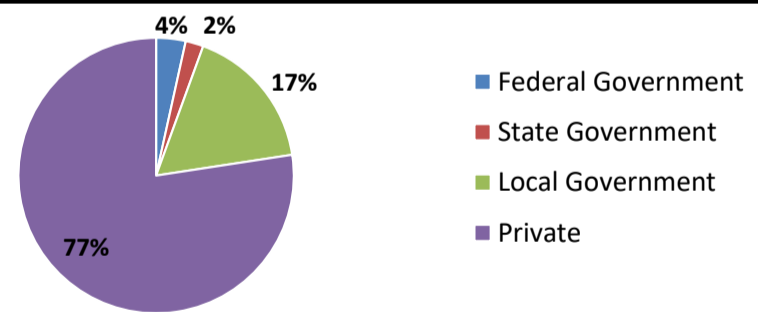
Projected Fastest Growing Industries in WDA (% growth 2014-2024)



Employment by Size Class (2nd Quarter 2017)



Employment by Ownership (2nd Quarter 2017)



Average Weekly Wage (2nd Quarter 2017)

	Q2 2017	Q1 2017	Q2 2016	Change	
				Quarter	Year
WDA	\$675	\$683	\$665	-\$8	\$9
Texas	\$1,026	\$1,124	\$1,000	-\$99	\$25
US	N/A	\$1,111	\$988	N/A	N/A

Employment by Industry (2nd Quarter 2017, Percent Change)

Industry	Employment	% of total	% Change	
			Quarter	Year
Natural resources and mining	3,279	3.1%	10.4%	26.6%
Construction	2,702	2.6%	0.0%	-0.7%
Manufacturing	740	0.7%	-0.8%	-5.6%
Trade, transportation and utilities	30,826	29.4%	0.0%	-2.1%
Information	845	0.8%	-1.6%	10.7%
Financial activities	4,191	4.0%	2.1%	4.1%
Professional and business services	9,423	9.0%	-0.8%	5.0%
Education and health services	31,997	30.5%	0.2%	2.1%
Leisure and hospitality	12,013	11.5%	4.7%	2.6%
Other services	1,837	1.8%	-1.4%	2.2%
Public administration	6,944	6.6%	-0.1%	-0.7%
Total	104,797	100.0%	0.8%	1.6%

Employment by Industry (2nd Quarter 2017)

