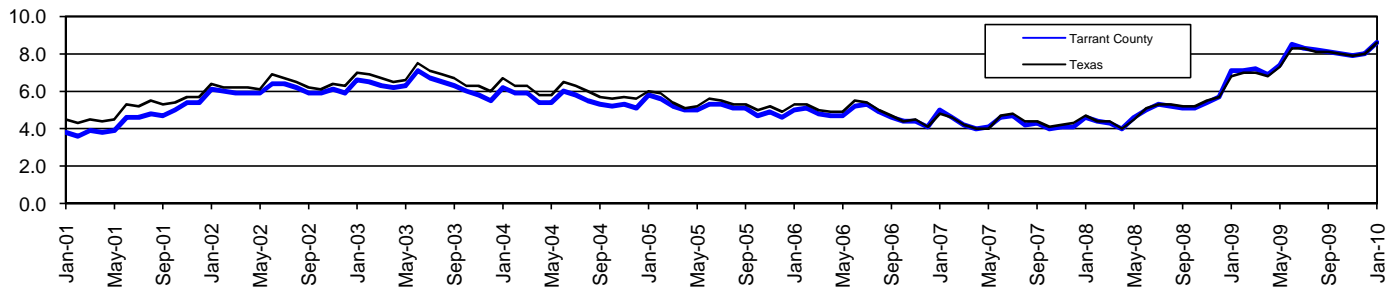


# Tarrant County Workforce Development Area\*

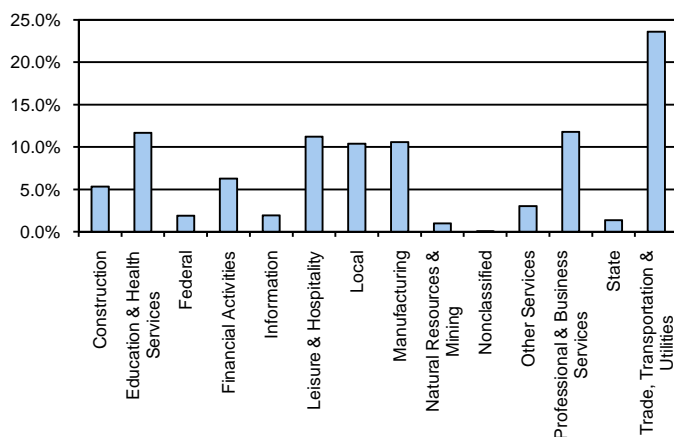
January 2010

Tarrant County WDA					Texas				
	CLF	Employed	Unemployed	Rate		CLF	Employed	Unemployed	Rate
Jan-10	911,032	832,344	78,688	8.6	Jan-10	12,094,136	11,049,755	1,044,381	8.6
Dec-09	905,710	833,515	72,195	8.0	Dec-09	12,027,653	11,069,879	957,774	8.0
Jan-09	887,983	824,501	63,482	7.1	Jan-09	11,738,166	10,937,524	800,642	6.8

### Historical Unemployment Rates



### Tarrant County WDA Industry Composition 3rd Quarter 2009



### Total WDA Claims

	Jan-10	Dec-09	Jan-09	OTY
Initial	7,757	6,465	9,775	-2,018
Continued	31,284	32,424	30,917	367
Continued Claims for the Week of the 12th				
Continued	16,387	16,334	16,491	-104

### Texas Unemployment Insurance Claims Filed

	Jan-10	Dec-09	Jan-09	OTY
Initial	108,752	100,826	125,284	-16,532
Continued	1,201,595	1,147,179	843,726	357,869
Continued Claims for the Week of the 12th				
Continued	254,414	266,245	202,492	51,922

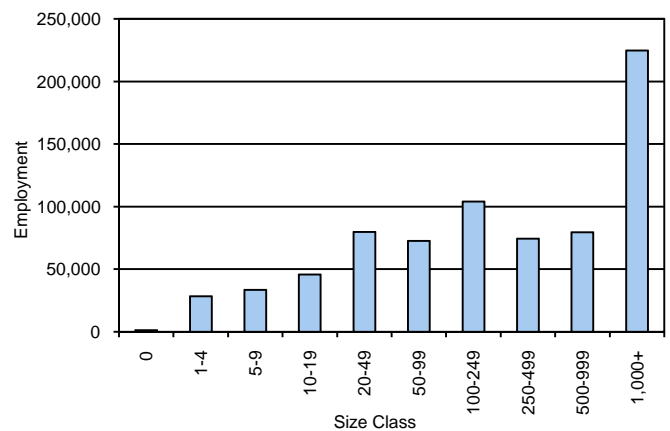
### Tarrant County Texas WDA Average Weekly Wage

	Tarrant	WDA	Qtr. Chg.	Texas
3rd Quarter 2009	\$834.73		-\$0.15	\$844.59
2nd Quarter 2009	\$834.88	WDA OTY Chg.		\$838.34
3rd Quarter 2008	\$840.14		-\$5.41	\$849.50

### NAICS Covered Employment Quarterly Data 3rd Quarter 2009

SUPER SECTOR	Employment	Change	
		Quarter	Year
Construction	39,547	-1,117	-7,231
Education & Health Services	86,928	517	2,811
Federal	14,095	-20	19
Financial Activities	46,725	249	537
Information	14,375	-369	-742
Leisure & Hospitality	83,371	-145	1,679
Local	77,157	-4,098	4,137
Manufacturing	78,641	-793	-8,207
Natural Resources & Mining	7,172	-199	-829
Nonclassified	223	-50	-43
Other Services	22,507	-179	-492
Professional & Business Services	87,654	-119	-8,181
State	10,184	-528	615
Trade, Transportation & Utilities	175,509	-662	-10,470
<b>TOTAL</b>	<b>744,088</b>	<b>-7,513</b>	<b>-26,397</b>

### Size Class Employment Composition 3rd Quarter 2009



\*Counties in WDA: Tarrant