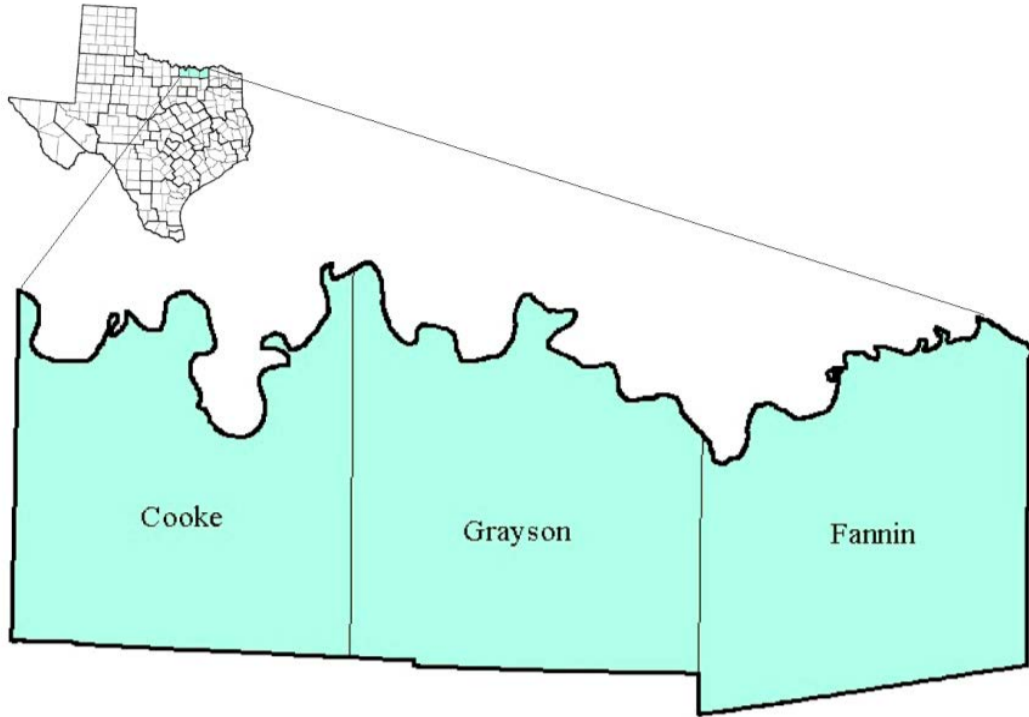


Texoma Workforce Development Area

January 2018



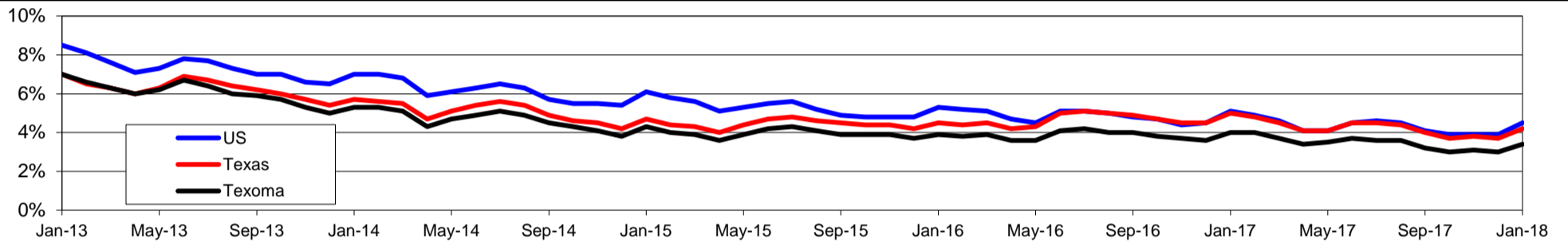
WDA Labor Force Statistics				
	Jan-18	Dec-17	Jan-17	OTY
CLF	96,411	96,725	95,635	776
Employed	93,087	93,828	91,803	1,284
Unemployed	3,324	2,897	3,832	-508
Rate	3.4%	3.0%	4.0%	-0.6%

Texas Labor Force Statistics				
	Jan-18	Dec-17	Jan-17	OTY
CLF	13,622,067	13,598,061	13,417,349	204,718
Employed	13,054,089	13,096,216	12,748,985	305,104
Unemployed	567,978	501,845	668,364	-100,386
Rate	4.2%	3.7%	5.0%	-0.8%

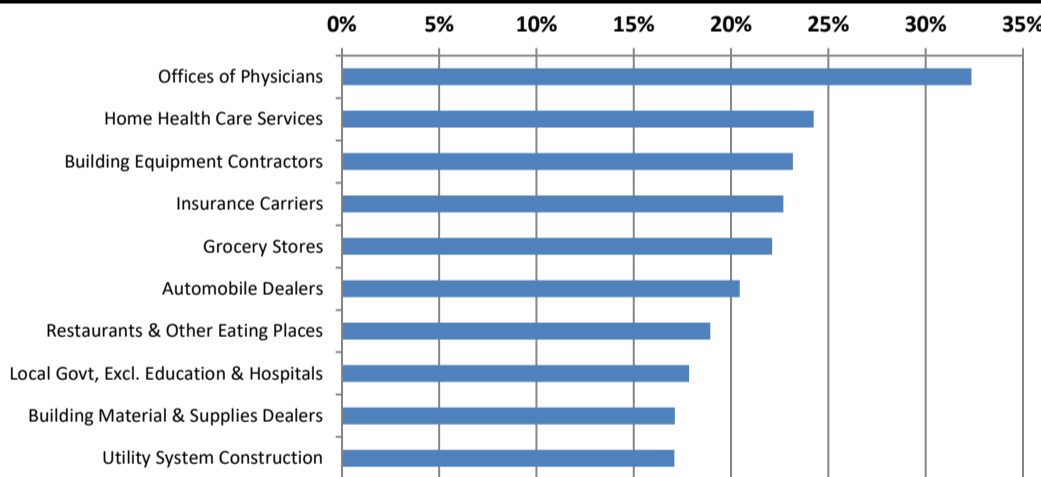
US Labor Force Statistics				
	Jan-18	Dec-17	Jan-17	OTY
CLF	160,037,000	159,880,000	158,676,000	1,361,000
Employed	152,848,000	153,602,000	150,527,000	2,321,000
Unemployed	7,189,000	6,278,000	8,149,000	-960,000
Rate	4.5%	3.9%	5.1%	-0.6%

Continued Claims for the Week of the 12th				
	Jan-18	Dec-17	Jan-17	OTY
WDA	559	522	595	-36
Texas	111,828	108,432	132,086	-20,258

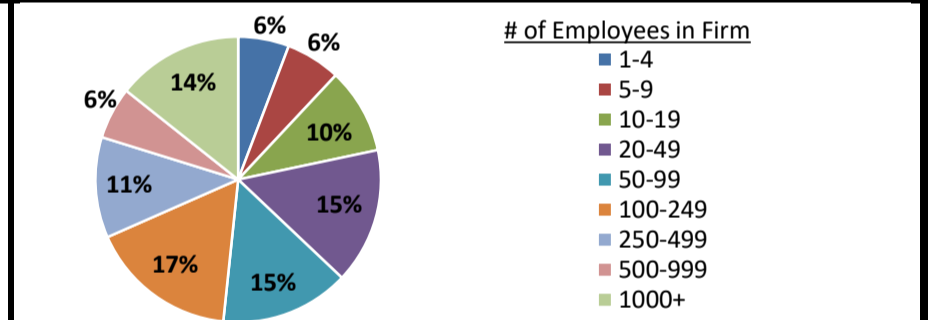
Historical Unemployment Rates



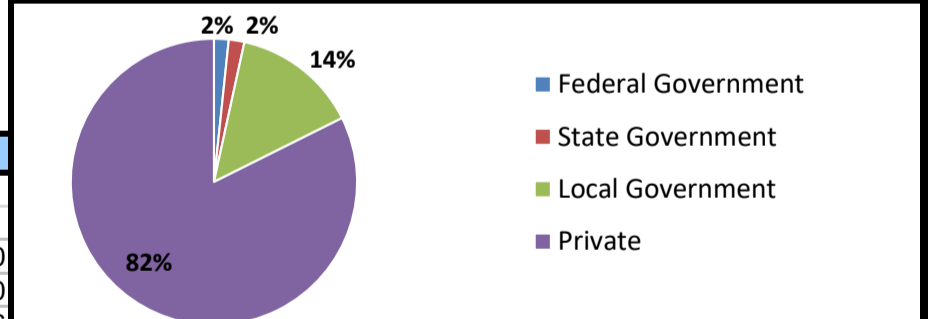
Projected Fastest Growing Industries in WDA (% growth 2014-2024)



Employment by Size Class (3rd Quarter 2017)



Employment by Ownership (3rd Quarter 2017)



Average Weekly Wage (3rd Quarter 2017)

	Q3 2017	Q2 2017	Q3 2016	Change	
				Quarter	Year
WDA	\$797	\$822	\$807	-\$25	-\$10
Texas	\$1,032	\$1,027	\$1,042	\$5	-\$10
US	\$1,021	\$1,020	\$1,027	\$1	-\$6

Employment by Industry (3rd Quarter 2017, Percent Change)

Industry	Employment	% of total	% Change	
			Quarter	Year
Natural resources and mining	1,859	2.8%	10.5%	35.8%
Construction	3,824	5.7%	1.4%	-1.1%
Manufacturing	9,400	14.0%	0.3%	-1.5%
Trade, transportation and utilities	12,654	18.8%	-0.3%	-1.8%
Information	522	0.8%	-0.6%	-9.1%
Financial activities	3,729	5.5%	0.7%	-0.3%
Professional and business services	4,003	6.0%	0.1%	8.6%
Education and health services	19,256	28.6%	-2.3%	2.8%
Leisure and hospitality	7,528	11.2%	-1.9%	-0.1%
Other services	1,462	2.2%	-2.6%	-7.1%
Public administration	3,037	4.5%	0.7%	0.8%
Total	67,274	100.0%	-0.5%	1.1%

Employment by Industry (3rd Quarter 2017)

