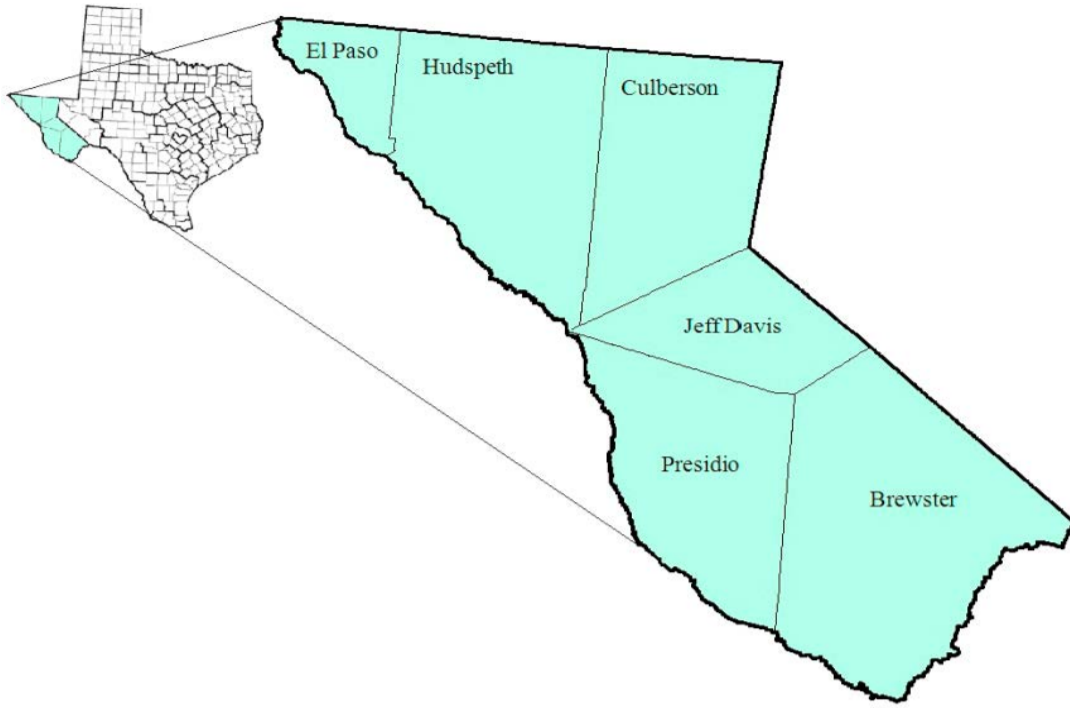


Borderplex Workforce Development Area

January 2018



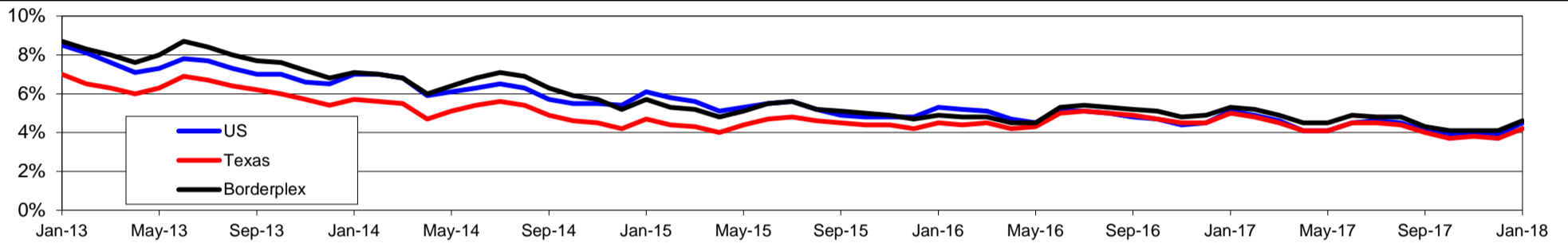
WDA Labor Force Statistics				
	Jan-18	Dec-17	Jan-17	OTY
CLF	365,447	364,493	363,816	1,631
Employed	348,725	349,647	344,493	4,232
Unemployed	16,722	14,846	19,323	-2,601
Rate	4.6%	4.1%	5.3%	-0.7%

Texas Labor Force Statistics				
	Jan-18	Dec-17	Jan-17	OTY
CLF	13,622,067	13,598,061	13,417,349	204,718
Employed	13,054,089	13,096,216	12,748,985	305,104
Unemployed	567,978	501,845	668,364	-100,386
Rate	4.2%	3.7%	5.0%	-0.8%

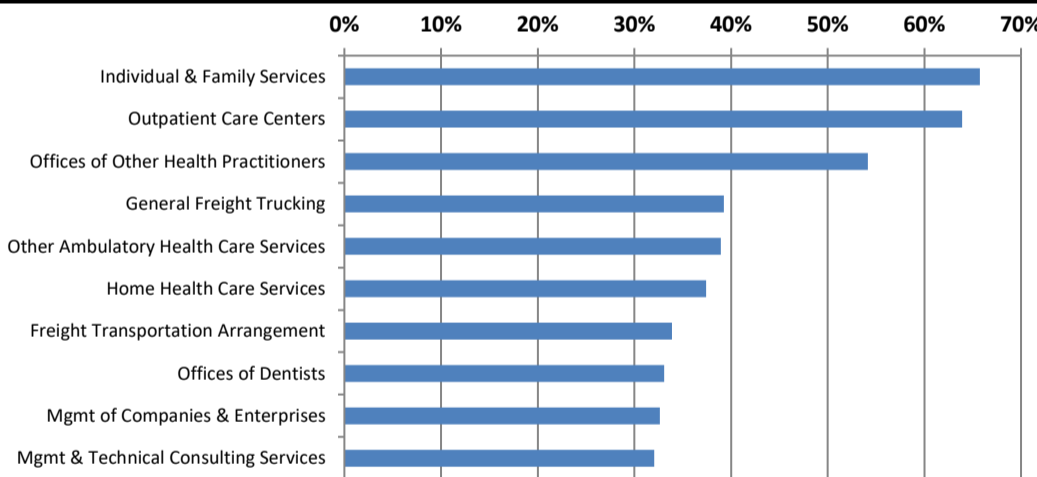
US Labor Force Statistics				
	Jan-18	Dec-17	Jan-17	OTY
CLF	160,037,000	159,880,000	158,676,000	1,361,000
Employed	152,848,000	153,602,000	150,527,000	2,321,000
Unemployed	7,189,000	6,278,000	8,149,000	-960,000
Rate	4.5%	3.9%	5.1%	-0.6%

Continued Claims for the Week of the 12th				
	Jan-18	Dec-17	Jan-17	OTY
WDA	3,111	3,053	3,473	-362
Texas	111,828	108,432	132,086	-20,258

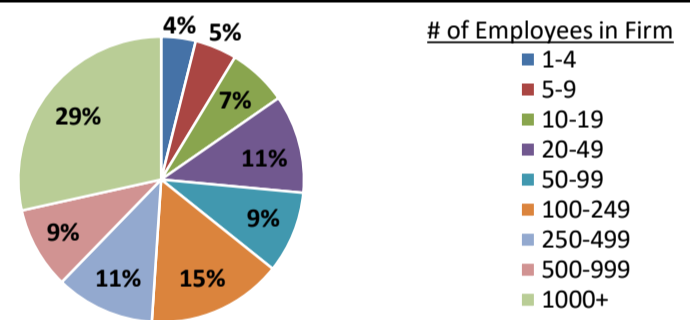
Historical Unemployment Rates



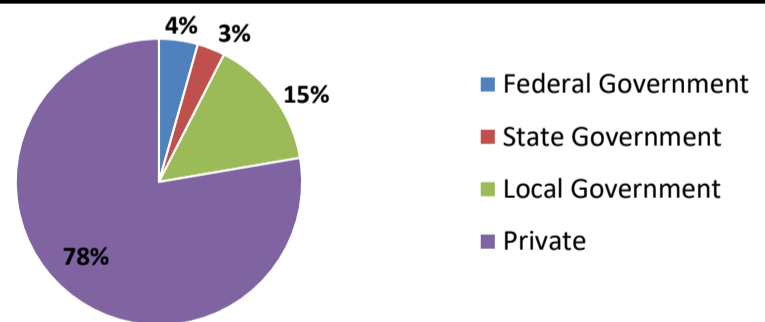
Projected Fastest Growing Industries in WDA (% growth 2014-2024)



Employment by Size Class (3rd Quarter 2017)



Employment by Ownership (3rd Quarter 2017)



Average Weekly Wage (3rd Quarter 2017)

	Q3 2017	Q2 2017	Q3 2016	Change	
				Quarter	Year
WDA	\$720	\$719	\$730	\$1	-\$10
Texas	\$1,032	\$1,027	\$1,042	\$5	-\$10
US	\$1,021	\$1,020	\$1,027	\$1	-\$6

Employment by Industry (3rd Quarter 2017, Percent Change)

Industry	Employment	% of total	% Change	
			Quarter	Year
Natural resources and mining	1,691	0.6%	-4.6%	-13.0%
Construction	16,156	5.3%	-1.2%	3.4%
Manufacturing	16,866	5.5%	-1.8%	-2.2%
Trade, transportation and utilities	69,652	22.8%	0.2%	-0.9%
Information	5,193	1.7%	0.7%	0.2%
Financial activities	12,739	4.2%	0.9%	-0.9%
Professional and business services	32,971	10.8%	-1.1%	-1.1%
Education and health services	87,627	28.6%	-3.4%	1.5%
Leisure and hospitality	38,501	12.6%	-1.1%	0.4%
Other services	7,029	2.3%	-0.7%	-2.9%
Public administration	17,685	5.8%	-0.1%	1.1%
Total	306,110	100.0%	-1.4%	0.1%

Employment by Industry (3rd Quarter 2017)

