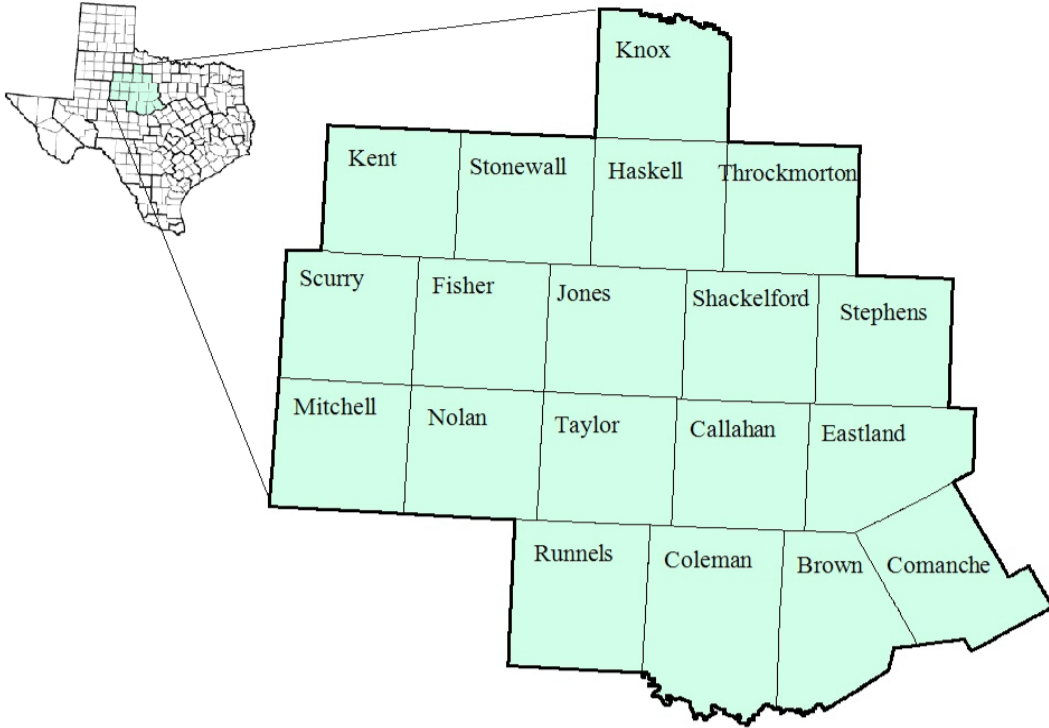


West Central Texas Workforce Development Area

January 2018



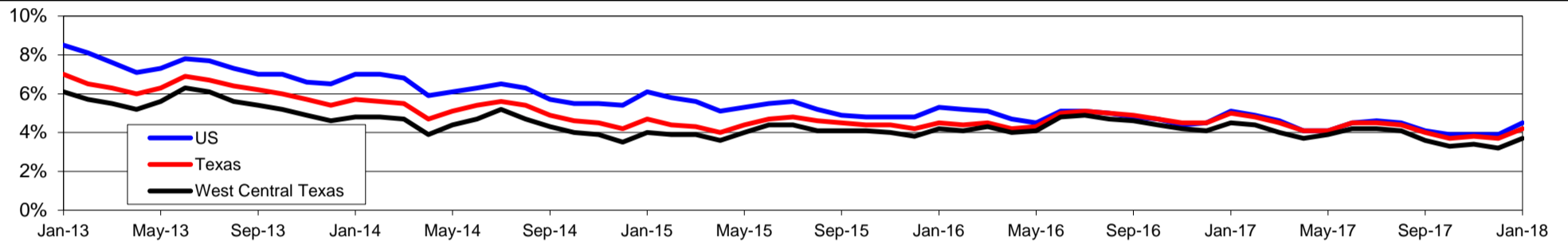
WDA Labor Force Statistics				
	Jan-18	Dec-17	Jan-17	OTY
CLF	141,774	141,743	140,596	1,178
Employed	136,540	137,161	134,267	2,273
Unemployed	5,234	4,582	6,329	-1,095
Rate	3.7%	3.2%	4.5%	-0.8%

Texas Labor Force Statistics				
	Jan-18	Dec-17	Jan-17	OTY
CLF	13,622,067	13,598,061	13,417,349	204,718
Employed	13,054,089	13,096,216	12,748,985	305,104
Unemployed	567,978	501,845	668,364	-100,386
Rate	4.2%	3.7%	5.0%	-0.8%

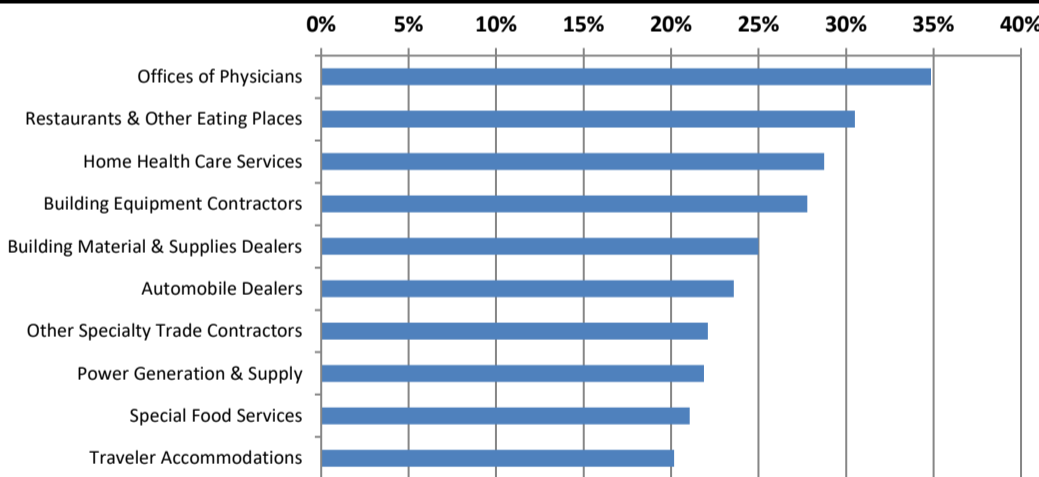
US Labor Force Statistics				
	Jan-18	Dec-17	Jan-17	OTY
CLF	160,037,000	159,880,000	158,676,000	1,361,000
Employed	152,848,000	153,602,000	150,527,000	2,321,000
Unemployed	7,189,000	6,278,000	8,149,000	-960,000
Rate	4.5%	3.9%	5.1%	-0.6%

Continued Claims for the Week of the 12th				
	Jan-18	Dec-17	Jan-17	OTY
WDA	687	616	904	-217
Texas	111,828	108,432	132,086	-20,258

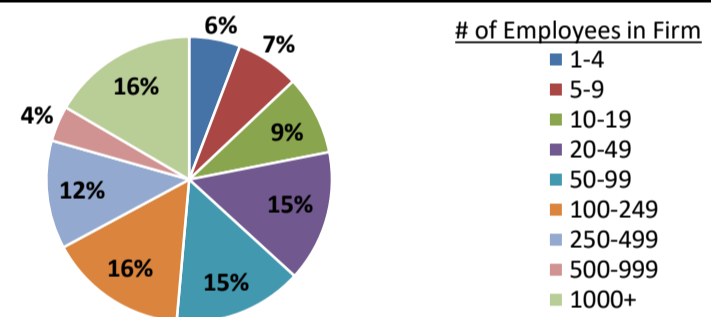
Historical Unemployment Rates



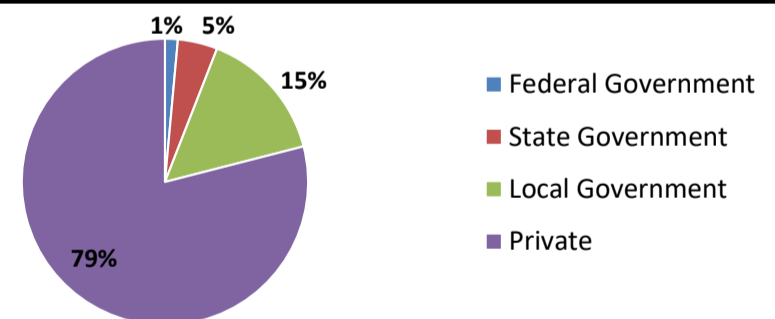
Projected Fastest Growing Industries in WDA (% growth 2014-2024)



Employment by Size Class (3rd Quarter 2017)



Employment by Ownership (3rd Quarter 2017)



Average Weekly Wage (3rd Quarter 2017)

	Q3 2017	Q2 2017	Q3 2016	Change	
				Quarter	Year
WDA	\$768	\$759	\$751	\$9	\$17
Texas	\$1,032	\$1,027	\$1,042	\$5	-\$10
US	\$1,021	\$1,020	\$1,027	\$1	-\$6

Employment by Industry (3rd Quarter 2017, Percent Change)

Industry	Employment	% of total	% Change	
			Quarter	Year
Natural resources and mining	7,000	5.8%	1.1%	4.4%
Construction	6,241	5.1%	-0.5%	-3.9%
Manufacturing	9,093	7.5%	1.4%	1.1%
Trade, transportation and utilities	24,792	20.4%	0.4%	1.1%
Information	1,338	1.1%	-2.0%	-7.2%
Financial activities	5,939	4.9%	1.8%	5.4%
Professional and business services	7,706	6.4%	2.2%	-0.3%
Education and health services	34,615	28.5%	-3.0%	0.3%
Leisure and hospitality	13,191	10.9%	0.4%	3.2%
Other services	3,458	2.9%	-2.1%	2.4%
Public administration	7,924	6.5%	-0.4%	-2.2%
Total	121,297	100.0%	-0.5%	0.8%

Employment by Industry (3rd Quarter 2017)

