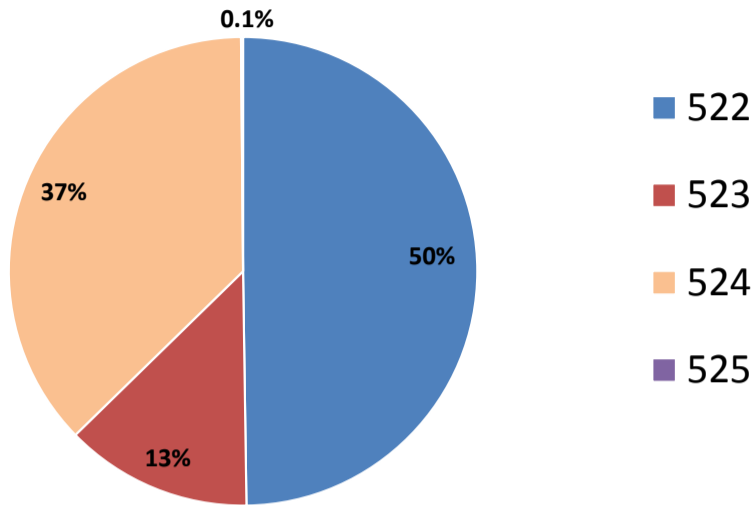


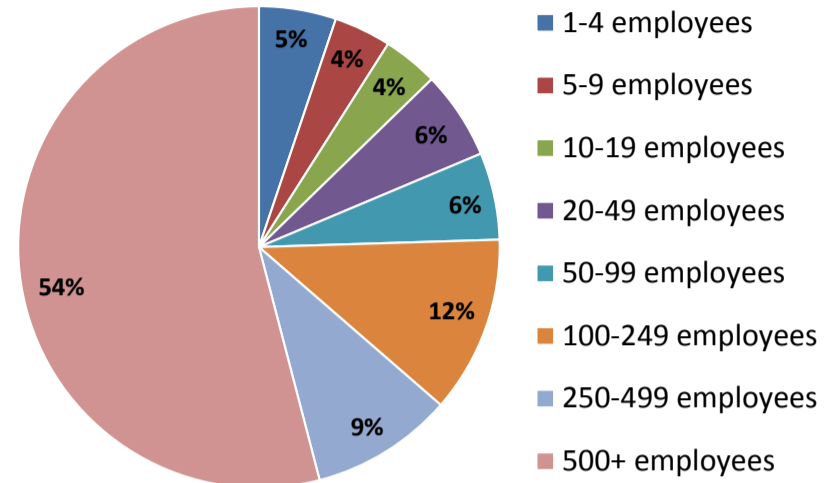
TEXAS INDUSTRY PROFILE
NAICS Sector 52 - Finance and Insurance
Fourth Quarter 2016

This sector comprises establishments primarily engaged in financial transactions (transactions involving the creation, liquidation, or change in ownership of financial assets) and/or in facilitating financial transactions. **Components: Monetary Authorities/Central Bank-NAICS 521, Credit Intermediation and Related Activities-NAICS 522, Securities, Commodity Contracts, and Other Financial Investments and Related Activities-NAICS 523, Insurance Carriers and Related Activities-NAICS 524, Funds, Trusts, and Other Financial Vehicles-NAICS 525.**

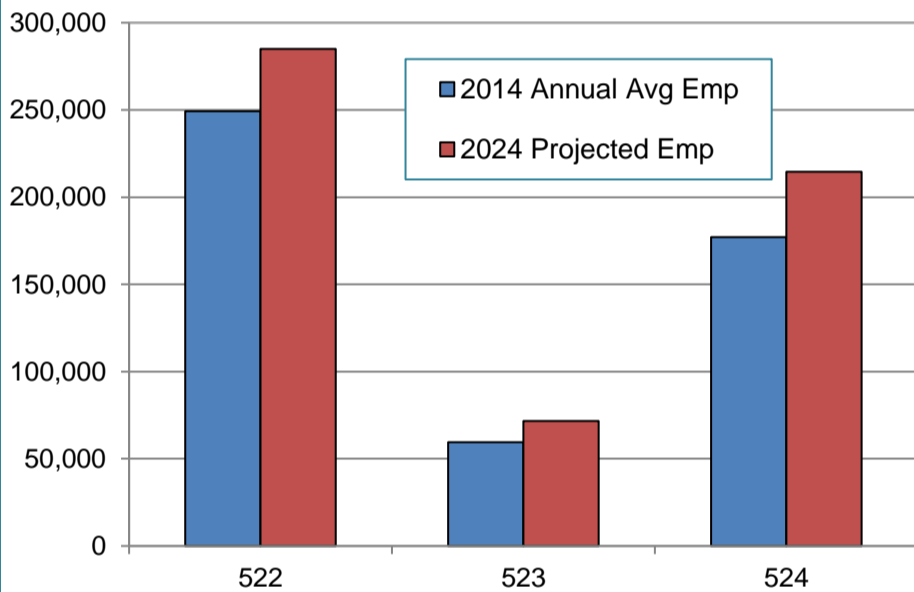
Industry Subsectors by Employment (Emp: 522,164)



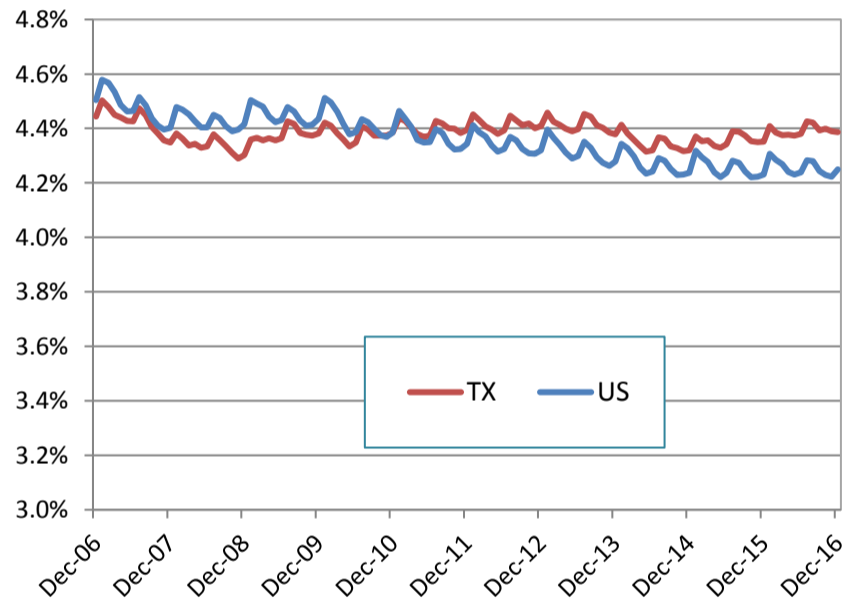
Size Classes by Employment



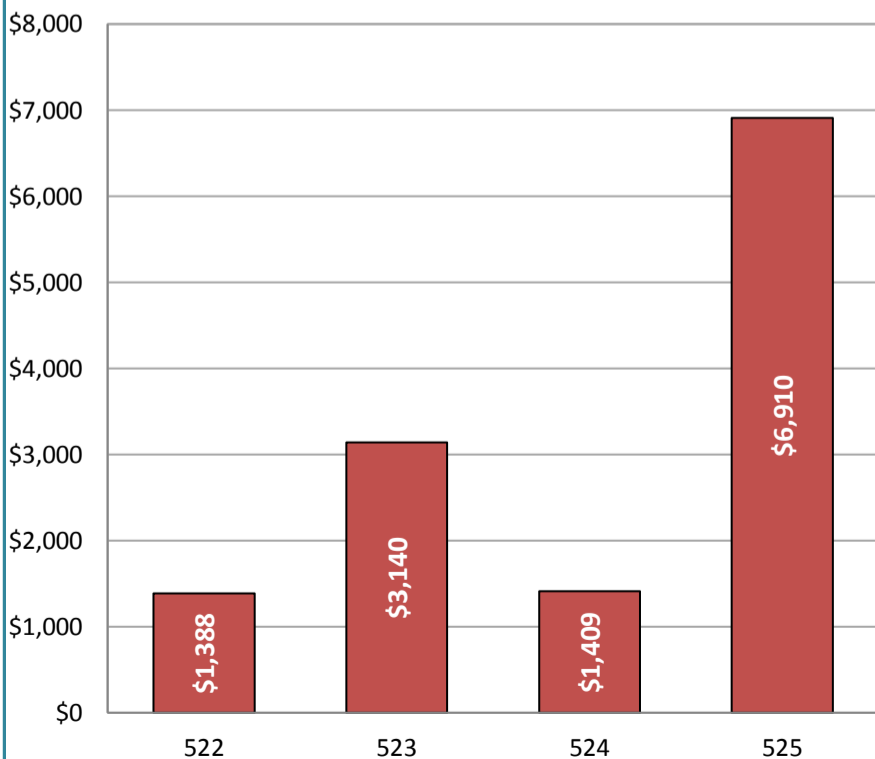
Projected Industry Employment



Industry Employment as a Percentage of Total Nonfarm Employment (Private Ownership Only)



Average Weekly Wage



Industry Employment as a Percentage of County Employment

